



## WORSHIP SERVICES

**FRIDAY, May 3, at 7:30 p.m.**

*"Simcha"* First-Friday *erev Shabbat*  
Service honoring May anniversaries  
and birthdays with our Adult Choir

**SATURDAY, May 4, at 10:00 a.m.**

*Shabbat* Service and *Torah* Dialogue

**FRIDAY, May 10**

6:00 p.m. - *erev Shabbat* Service with  
Grades K-2

7:30 p.m. - *erev Shabbat* Service

**SATURDAY, May 11, at 10:00 a.m.**

*Shabbat* Service and *Torah* Dialogue

**FRIDAY, May 17, at 8:00 p.m.**

"Honoring our Volunteers" as well  
as Talia August on her completion  
of the LAMED program  
*erev Shabbat* Service preceded by a  
Wine-and-Cheese Social at 7:30 p.m.

**SATURDAY, May 18, at 10:00 a.m.**

*Shabbat* Service and *Torah* Dialogue

**FRIDAY, May 24, at 7:30 p.m.**

*erev Shabbat* Service with guest  
speaker Ira Cooperman who  
will speak in memory of military  
veterans and others this Memorial  
Day weekend

**SATURDAY, May 25 at 10:00 a.m.**

*Shabbat* Service and *Torah* Dialogue  
with Carol Nemeroff giving the *dvar*  
*Torah*

**FRIDAY, May 31, at 7:30 p.m.**

*erev Shabbat* Service

**SATURDAY, June 1, at 10:00 a.m.**

*Shabbat* Service and *Torah* Dialogue  
*continued page 3*

## **IN CELEBRATION OF OUR 22ND CONFIRMATION CLASS**

SATURDAY, JUNE 8, 2019 AT 7:00 P.M.

SHAVUOT, 5TH OF SIVAN 5779



We will rejoice with the following students and their families at a creative  
service that includes the students' own thoughtful writings:

### Confirmands

### Parents

Jenna Margasak . . . . . Jeffrey and Robynn Margasak

Melanie Poppel . . . . . Stuart and Deborah Poppel ■

## **CONGREGATION ANNUAL MEETING**

Tuesday, May 21

6:30 p.m. - Pizza Dinner

7:00 p.m. - Annual Meeting

## **SYNAGOGUE LEADERSHIP**

### **Main Office**

215-635-3110

### **Rabbi Leah R. Berkowitz**

215-635-4182

### **Rabbi Elliot Holin, Founding Rabbi**

215-882-0017

### **Ruben Honik, President**

215-327-9166

### **Barbara Fink, Vice President**

215-886-2297

### **Jeffrey Margasak, Vice President**

215-635-9332

### **Lorie B. Slass, Secretary**

215-635-0920

### **Lisa Landau, Treasurer**

215-635-9996

## **PROFESSIONAL STAFF**

**IN RESPECT OF SHABBAT, THE OFFICE  
CLOSES AT 3:00 P.M. ON FRIDAYS.**

### **Elaine Stevens, Executive Director**

215-635-3110

### **Susan Levey**

**Interim Director of Education**

215-635-7106

### **Sheri Cutler**

**Early Learning Center Director**

215-635-4180

### **Rebecca Schwartz, Cantorial Soloist**

215-572-6094

### **Please send correspondence to:**

Congregation Kol Ami

8201 High School Road

Elkins Park, PA 19027

**Website:** [www.kolamielkinspark.org](http://www.kolamielkinspark.org)

**Facebook:** <https://www.facebook.com/kolamielkinspark>

## **BULLETIN SUBMISSIONS**

Please send articles by the fifth of the previous month to **Janet Falon** at [jfaloon@english.upenn.edu](mailto:jfaloon@english.upenn.edu). Articles may be edited as needed. ■



**PLEASE JOIN US ON  
MAY 1, 2019, AT 7:00 P.M.  
AT CONGREGATION KOL AMI  
(8201 HIGH SCHOOL ROAD, ELKINS PARK)  
FOR THE OLD YORK ROAD KEHILLAH'S  
ANNUAL OBSERVANCE OF  
YOM HaSHOAH – HOLOCAUST REMEMBRANCE DAY**

We will hold a brief *Yom HaShoah* service, followed by a presentation by Lise Marlowe, chair of the Education Committee at the Holocaust Awareness Museum in Philadelphia. Lise will tell the story of her great-grandmother's role in the Danish Resistance Movement, in which 7,000 Danish Jews were rescued and brought to safety in Sweden. A space will be made available afterwards for those who would like to pray the complete *Maariv* service.

Lise Marlowe teaches History and Holocaust Awareness to sixth graders in the Cheltenham School District. She currently serves as the chair of the Education Committee at the Holocaust Awareness Museum in Philadelphia. In 2006, Lise was awarded the History Channel "Teacher of the Year" award from First Lady Laura Bush at the White House. She recently received the 2019 Human and Civil Rights Award from Pennsylvania State Education Association. ■

---

# FROM THE RABBI

*Rabbi Leah R. Berkowitz*

## THE SACRED RESPONSIBILITY OF WELCOMING

After the New Zealand mosque attacks in March, I joined my colleagues from the Philadelphia Board of Rabbis at Masjidullah on Limekiln Pike for Friday prayers with our Muslim neighbors. It was incredibly moving to see people of different faiths come together in defiance of hate. I was particularly touched by the loving way the members of the community greeted us. Yes, they seemed happy that people from other faiths had come to show their support, but it also seemed as though this kind of welcoming was a regular part of their Friday worship.

Before I even entered the building, people on the curb saw my *kippah* and said, “Sister, this way.” When I walked in, a woman immediately offered herself to me as a guide. When I asked where the ladies’ room was, she walked me there herself, so I wouldn’t feel uncomfortable passing by the men’s section of the prayer service. She showed me where to leave my shoes and, when I got it wrong, she retrieved them and brought them to me. The regulars moved seats to accommodate us. They asked our names and shared theirs. They greeted us with smiles, hugs, and words of welcome. The gratitude, love, and interest they showed towards us felt genuine and heartfelt.

While I am comfortable in most houses of worship, this kindness helped me acclimate to a space where I was unfamiliar with the language and customs. It made me realize that the people who greet us at the door are performing a sacred task and that our neighbors at the masjid take that responsibility very seriously. And so I ask you:

**If someone came to our synagogue for the first time, would they feel welcomed and supported? And what would it look like for us to treat welcoming guests as a sacred responsibility?**

At Kol Ami, we pride ourselves on being warm and inclusive, open and welcoming. However, when we come to synagogue, it’s only natural that we greet our friends first, sit next to people we know, or assume that someone else will reach out to the newcomers. What would it look like if we practiced an even higher level of what our movement calls “audacious hospitality”—meeting people where they are and helping them to feel welcome as they come in?

The rabbis hold up Abraham and Sarah as biblical exemplars of hospitality. Their tents were open on all four sides, so that no one had to circle around looking for the entrance. Abraham and Sarah went beyond their own tent to provide weary travelers with food, drink, and lodging on their way. When strangers tried to thank the couple for their hospitality, Abraham and Sarah pointed out that it was God who provided their sustenance and encouraged

*continued page 4*

## WORSHIP SERVICES

(continued from page 1)

**FRIDAY, June 7, at 7:30 p.m.**

“Pride” *erev Shabbat* Service

**SATURDAY, June 8**

10:00 a.m. - *Shabbat* Service and  
*Torah* Dialogue

7:00 p.m. - *Shavuot* - Confirmation  
Service

**SUNDAY, June 9, at 1:00 p.m.**

*Shavuot* - *Yizkor* Service

**FRIDAY, June 28, at 6:30 p.m.**

“*Simcha*” Fourth-Friday *erev Shabbat*  
Service honoring June anniversaries  
and birthdays

## FRIDAY EREV SHABBAT SERVICES ON THE MEADOW:

5:45 p.m. - Bring your own dinner  
and blankets or comfortable chairs

6:30 p.m. - Brief worship service  
beneath the trees and evening sky

**June 14, 21 & 28**

**July 5, 12, 19 & 26**

**August 2, 9, 16, 23 & 30**

## SATURDAY SHABBAT SERVICES AND TORAH DIALOGUES:

10:00 a.m. - Service with potluck  
lunch to follow; locations TBD

**July 13 & 27**

**August 3**

**September 7 ■**

## CONDOLENCES

We extend our condolences in loving  
memory of:

**Natalie Krieger**

*aunt of Jennifer (Erik) Streitwieser*

**Mitch Marcus**

*cousin of Ellen (Michael) Matz*

**Hubert Rice**

*father of Bonnie (Brad) Goldstein*

May their memories forever be blessings  
in the midst of our People. ■





their guests to say blessings. This teaches us that only when their guests' most basic and urgent needs were met could they turn to the sacred tasks of prayer and learning.

So, too, when people walk into Kol Ami, we don't want to make them wait a moment longer than necessary to feel comfortable and supported. We want to greet them at the door, both literally and figuratively, making sure that they have everything they need to participate in our worship, learning events, or social action projects—whether what they need is a prayer book, a page number, or directions to the restroom. Because it is only when our guests—or even our less-regular regulars—feel safe and cared for that they can truly participate in the life of our sacred community.

This sacred responsibility falls upon all of us, no matter what role we are playing at the synagogue on any given day; and it is especially incumbent upon the ushers who greet our guests at Friday-night services.

We at Kol Ami are in desperate need of more volunteers to take on this sacred responsibility. If you are up to this holy task, please sign up when we sent out a sign-up genius beginning in the fall. ■

# Sustainability News

## CONGREGATION KOL AMI AGAIN ACHIEVES THE HAZON SEAL OF SUSTAINABILITY

We are proud to announce that Congregation Kol Ami received the 2018 *Hazon* Seal of Sustainability, the second year of achieving this annual award. The award signifies Congregation Kol Ami, along with more than 50 Jewish organizations across the country, as a national leader in the realm of Jewish sustainability.

We were recognized for taking tangible steps in environmental education: Beekeeping and the Environment; Judaism and Nature workshops and walks; Religious School *Mitzvah* Project; volunteer days (with Friends of High School Park); in Food Sustainability and Security (Elkins Park *Hazon* CSA, Act Against Hunger - an advocacy project in collaboration with Mazon and institutions in the Kehillah of Old York Road; volunteer days at Share Food; and participation in the 2018 JFGP/Hazon Philadelphia Food Summit - Hungry for Change.

We continue our commitment to sustainability this year, launching exciting new projects to building a stronger, healthier community, and to renewing this process for coming years.

Team leaders are Mark Kaplan, Jane Tausig, Carol Nemeroff, Justin Krik, Shelley Chamberlain, and Robin Rifkin. Interested in joining the green team? Reach out to [sustainability@kolamielkinspark.org](mailto:sustainability@kolamielkinspark.org). ■



## SUSTAINABILITY SUNDAY A SUCCESS!

February 24 was Sustainability Sunday - Living the Change at the Kol Ami Religious School, a fun, interactive religious-school program created by the Kol Ami *Shomrei Adamah* Environmental Stewardship Committee in collaboration with Interim Director of Education Susan Levey and staff, as part of the congregation's commitment to the *Hazon* Seal of Sustainability.



Justin Krik introduced the importance of sustainability and presented individual and communal actions now being adopted by faith communities worldwide that in aggregate can make an impact on climate change.

Sessions included learning about beekeeping and the environment taught by Jane Tausig, and local farming/sustainable food choices taught by Judy Dornstreich.

Younger students created environmental badges to be placed strategically as reminders to recycle and turn off water and lights. Shelley Chamberlain guided the fifth and sixth graders in preparing a non-meat protein salad for all to enjoy. Our students posted commitments on the bulletin board in our hallway. ■

## SUMMER ACTIVITIES FROM THE SPIRITUAL EXPLORATION GROUP (SEG) – AND EVERYONE IS WELCOME!

**Exploring Our Individual Spiritual Journeys**

**Sunday, May 26, at 10:15 a.m.**

**Home of Carol Nemeroff in Huntingdon Valley**

At the request of participants at the April 7 meeting of the SEG, Carol Nemeroff will be facilitating this opportunity for us to continue to explore and enhance our individual understandings and practices that nurture our spiritual lives. Interested people who were not able to attend the April 7 session are also welcome to join us. If you need directions, please contact Carol Nemeroff at [carolnemeroff@yahoo.com](mailto:carolnemeroff@yahoo.com).

**Mindful Walks**

**Sunday, June 2 and June 23 at 10:00 a.m.**

**Pennypack Trail (meet in parking lot at corner of Welsh Road and Terwood Road, Huntingdon Valley)**

This is an easy walk on a flat, paved trail with benches approximately every half mile. The purpose of the walk is, for a brief time, to quiet our always busy minds to better appreciate the beauty around us. Opportunities for outdoor meditation practices will be offered – or just enjoy the walk.

Both of these opportunities are open to Kol Ami members and their family and friends. No need to pre-register. Just show up and you will be welcomed.

The parking lot is in the middle of the trail, so we will walk in a different direction each time. Contact Carol Nemeroff at [carolnemeroff@yahoo.com](mailto:carolnemeroff@yahoo.com) if you need directions to the parking lot. ■

## IMPORTANT RELIGIOUS SCHOOL DATES

There's no school on May 12. Happy Mother's Day.

The last day of school is May 19. ■



## COMMITTEE MEETINGS

**Operations Committee**

Tuesday, June 4, at 7:30 p.m.

Chairs: Guy Appel, 215-938-9330, and Marshall Schafer, 215-663-0228

**Social Action Committee**

Monday, May 6, at 7:00 p.m.

Chairs: Shelley Chamberlain, 215-680-7408, and Rocky Weinstock, 215-782-3848

**Spiritual Exploration Group**

Thursday, May 30, at 7:00 p.m.

Chairs: Janet Falon, 215-635-1698, and Meryle Gurmankin, 215-464-2466

**Worship Enhancement Committee**

Wednesday, June 12, at 7:30 p.m.

Chairs: Mindy Levy, 215-885-3672, and William Shapiro, 215-517-8666 ■

## MAZAL TOV

...to **Paul and Mindy Levy** on the birth of their second granddaughter, Hattie Bea Western, on April 8. Hattie's parents are Kyle Western and Stephanie Jacobson and big sister is Harper Vida Western. ■

# Kol Ami Events

---

## SPRING & SUMMER ARE PERFECT SEASONS TO GET INVOLVED WITH CARING CONGREGANTS

*"Be like a flower and turn your face to the sun."*

—Kahlil Gilbran

Caring Congregant volunteers help congregants with transportation to local appointments or Kol Ami events, provide meals, serve as a friendly visitor or caller, and more. And remember, you can take advantage of the kindness of Caring Congregants when YOU could use any of the above services. Please contact Elaine Gershenson at either 215-887-3994 or [gershlaw@comcast.net](mailto:gershlaw@comcast.net)

## JOIN LOCAs FOR DINNER & SERVICES IN MAY

**Friday, May 3, at 5:30 p.m. at Marco Polo, Elkins Park**

Join the Ladies of a Certain Age (LOCA) for dinner. After dinner, the group will go together to *erev Shabbat* Services. Both LOCAs and MOCAs (Men of a Certain Age) are welcome. Please RSVP to Joan Greenberg at [jgreenbe53@gmail.com](mailto:jgreenbe53@gmail.com) or 215-530-1166 so she can make dinner reservations.

## ARTORAH: OUR TORAH – OUR BOOK TORAH THROUGH THE EYES OF AN ARTIST – AND THROUGH YOURS

**This three-part series will be held on Mondays  
May 6, 13 & 20 from 7:00 to 8:30 p.m.**

While her paintings are on display at Kol Ami, artist Rhoda Ryba will lead us to carefully observe text from the Hebrew Bible, to discover its art, beauty, poetry, and personal meaning for our lives. There is so much art and beauty in the Hebrew Bible that we may not always see! In this series, participants will look carefully at art and text, and explore representations of concepts in the TaNaKh, as if through the eyes of an artist.

This is not an art class; this is a Biblical text class. No artistic talent, nor Hebrew literacy, is required. An interest in art is helpful — a little Hebrew could be helpful — but the only requirements are an open mind and interest in looking at "our *Torah*" in a different way.

RSVP to Elaine Stevens no later than Wednesday, May 1.

## WHAT DO YOU DO WHEN YOUR BEST FRIEND IS A HERETIC?

**Thursday, May 30, at 7:00 p.m.**

Rabbi Berkowitz will teach about the story of Elisha Ben Abuyah at the next meeting of the Spiritual Exploration Group. This story has a connection to *Shavuot*, which is coming up on Sunday, June 9.

## SOCIAL ACTION OPPORTUNITY VOLUNTEER WITH US IN THE FIRST WEEK OF JUNE FOR INTERFAITH HOUSING ALLIANCE



Interfaith Housing Alliance (IHA) is a non-profit organization that has provided housing and supportive services for homeless families in Montgomery County for over 25 years. For the past four years, the Kol Ami Social Action Committee has partnered with the IHA as a "Buddy" Congregation to St. Matthew's Episcopal Church in Maple Glen, which along with other local congregations, house up to three homeless families for one month; provide meals and transportation; and stay overnight with the families. As a "Buddy" Congregation, volunteers from Kol Ami have helped St. Matthew's for one week of the month to provide dinners, transportation, and overnight stays at the church.

This year, Kol Ami will buddy with Ambler Church of the Brethren at 359 East Butler Avenue in Ambler to assist and support the homeless families who are housed there from the evening of **June 2 through the morning of June 6.** We need volunteers for this wonderful and meaningful family friendly *Mitzvah*. A Sign-Up Genius will go out to our members in May. We will need volunteers to provide dinners, to stay for the meals with the families, and to stay overnight at the church with the families.

There are also other volunteer opportunities, such as purchasing toys/books for the children at the shelter, donating

*continued next page*



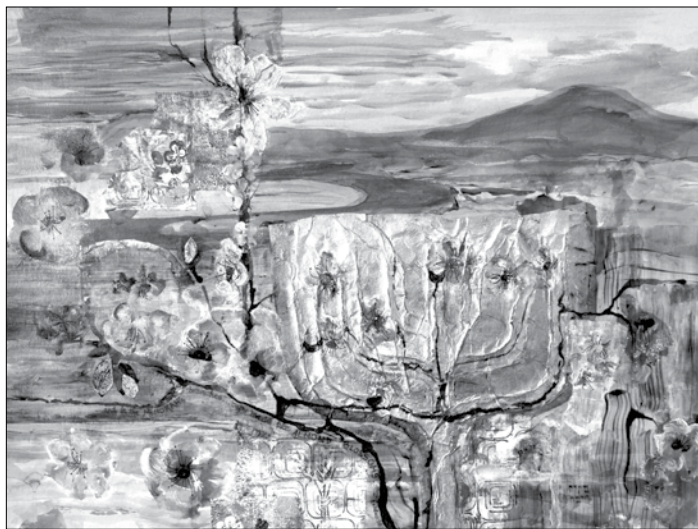
## KOL AMI EVENTS (continued from previous page)

household items to the families at a later time when they are able to secure permanent housing after their stay in the church, and preparing or providing dinners to be brought there by another volunteer. These opportunities often lead to lasting bonds between volunteers and families as they spend time over dinner, during transportation or the quiet evening hours. Shifts can be shared with another Kol Ami friend.

Past participants have enjoyed this opportunity to give back to those in need in our community. They have found it a rewarding and unforgettable experience and a meaningful way to support local homeless families as they transition to self-sufficiency.

If you are interested in volunteering or have any questions about this opportunity, please contact Laurie Jubelirer Langman at [laurierobin@verizon.net](mailto:laurierobin@verizon.net) or at 610-608-4293. ■

## KOL AMI'S ARTIST OF THE MONTH RHODA "BATYA" RYBA (APRIL 19-MAY 20)



Rhoda – or “Batya” – Ryba is a lifelong student and teacher of Bible and the inspiration for living that she finds there. In recent years, after retiring from a 30+ year career in hospital and healthcare management, Rhoda began to paint in earnest, finding inspiration for her art in the Hebrew Bible – painting its poetry – and signing her paintings with her Hebrew name, Batya. “My mixed media work imbeds Jewish sayings, Biblical words and phrases, in Hebrew and in English, into symbolic abstract illustrations of the deeply meaningful messages that move my art and my heart.”

The Kol Ami gallery hours are Wednesday from 4:00-8:00 p.m. and Sunday from 10:00 a.m.-noon. If the Religious School is closed on those days, the gallery is also closed. A percentage of all displayed purchased works will be donated to Kol Ami ■

## *Educational Opportunities*

# Study at the *Shul* for Adults

RSVP to Elaine Stevens at 215-635-3110. There is a \$50 fee for non-members to attend any of these courses.

## Privacy vs. Security? Personal Expectations vs. Unseen Risks?

Ira Cooperman

Four Thursdays at 7:30 p.m.; May 2, 9, 16 & 23

As a consequence of the attacks on 9/11 and with



the advances in new technology, do Americans need to reduce our expectation of privacy and accept the mass surveillance of law enforcement and intelligence agencies that has characterized the National Security policies of several recent administrations? Is maintaining privacy expectations by

denying government access to available personal information that potentially could help prevent terrorist acts inherently unreasonable and inconsistent with protecting our liberty? Does the possibility of catastrophic attacks require preemptive security strategies? If so, does that alter basic assumptions on which many privacy expectations are based?

Come join one or more of these discussions in the Kol Ami Board Room led by Ira Cooperman, a former intelligence officer who has worked with the CIA, NSA, and the military. Having lectured on various National Security topics at the Chautauqua Institution, U.S. Military Academy at West Point, State University of New York, and at Temple University's Ambler and Center City campuses, Ira is open to discuss all points of view. ■

BELOW: With a little help from their teacher, our Early Learning Center children mastered the art of making *matzah* balls as part of their Passover education day on April 18.



ABOVE: Rebecca Schwartz and our Adult Choir celebrating their *B'Nai Mitzvah*.



# KOL AMI MAY 2019 AT A GLANCE

Sunday	Monday	Tuesday	Wednesday	Thursday	Friday	Saturday
			<b>1</b> Religious School 4:00 p.m.  <b>Yom HaShoah Service</b> 7:00 p.m.	<b>2</b> “Study at the <i>Shul</i> ” for Adults with Ira Cooperman 7:30 p.m.	<b>3</b> Early Learning Center <b>erev Shabbat</b> service with Rebecca Schwartz 10:00 a.m.  <b>LOCA Dinner at Marco Polo</b> 5:30 p.m.  “ <i>Simcha</i> ” First-Friday <b>erev Shabbat</b> Service with Adult Choir 7:30 p.m.	<b>4</b> <b>Shabbat Service and Torah Dialogue</b> 10:00 a.m.
<b>5</b> Religious School 10:00 a.m. - Noon 12:00 p.m. - Student Choir Rehearsal  <b>Adult Choir Rehearsal</b> 10:25 a.m.  <b>LOCA Tea Party</b> 2:00 p.m. Home of Jane Finkle	<b>6</b> <b>Social Action Committee Meeting</b> 7:00 p.m.  <b>Torah 3-Part Series</b> with Rhoda Ryba 7:00 p.m.	<b>7</b> Early Learning Center Fitness 9:30 a.m.  “Study at the <i>Shul</i> ” for Adults with Neal Beatus 7:00 p.m.	<b>8</b> Religious School 4:00 p.m. and 6:00 p.m.	<b>9</b> Early Learning Center Yoga 9:30 a.m.  “Study at the <i>Shul</i> ” for Adults with Ira Cooperman 7:30 p.m.	<b>10</b> Early Learning Center <b>erev Shabbat</b> service with Rabbi Berkowitz 10:00 a.m.  <b>erev Shabbat</b> Service with Grades K-2 6:00 p.m.  <b>erev Shabbat</b> Service 7:30 p.m.	<b>11</b> <b>Shabbat Service and Torah Dialogue</b> 10:00 a.m.
<b>12</b> Religious School <b>CLOSED</b>	<b>13</b> Early Learning Center Music 9:30 a.m.  <b>Torah 3-Part Series</b> with Rhoda Ryba 7:00 p.m.	<b>14</b> Early Learning Center Fitness 9:30 a.m.  “Study at the <i>Shul</i> ” for Adults with Neal Beatus 7:00 p.m.	<b>15</b> Religious School 4:00 p.m. and 6:00 p.m.	<b>16</b> “Study at the <i>Shul</i> ” for Adults with Ira Cooperman 7:30 p.m.	<b>17</b> Early Learning Center <b>erev Shabbat</b> Service with Rebecca Schwartz 10:00 a.m.  “Honoring Our Volunteers” as well as Talia August on her completion of the <b>LAMED</b> program <b>erev Shabbat</b> Service 8:00 p.m. 7:30 p.m. - Wine- and-Cheese Social	<b>18</b> <b>Shabbat Service and Torah Dialogue</b> 10:00 a.m.
<b>19</b> Religious School <b>LAST DAY</b>  <b>Adult Choir Rehearsal</b> 10:25 a.m.	<b>20</b> <b>Torah 3-Part Series</b> with Rhoda Ryba 7:00 p.m.	<b>21</b> Early Learning Center Fitness 9:30 a.m.  <b>Annual Meeting</b> 7:00 p.m. 6:30 p.m. - Pizza Dinner	<b>22</b>	<b>23</b> “Study at the <i>Shul</i> ” for Adults with Ira Cooperman 7:30 p.m.	<b>24</b> Early Learning Center <b>erev Shabbat</b> Service with Susan Levey 10:00 a.m.  <b>erev Shabbat</b> Service with Guest Speaker Ira Cooperman 7:30 p.m.	<b>25</b> <b>Shabbat Service and Torah Dialogue</b> with Carol Nemeroff giving the <i>dvar Torah</i> 10:00 a.m.
<b>26</b> Spiritual Exploration Group: Exploring Our Individual Spiritual Journeys 10:15 a.m. at home of Carol Nemeroff in Huntingdon Valley	<b>27</b> Early Learning Center <b>CLOSED</b>	<b>28</b> Early Learning Center Fitness 9:30 a.m.	<b>29</b>	<b>30</b> Spiritual Exploration Group Meeting 7:00 p.m.	<b>31</b> Early Learning Center <b>erev Shabbat</b> Service with Rebecca Schwartz 10:00 a.m.  <b>erev Shabbat</b> Service 7:30 p.m.	

# KOL AMI JUNE 2019 AT A GLANCE

Sunday	Monday	Tuesday	Wednesday	Thursday	Friday	Saturday
						<b>1</b> <b>Shabbat Service and Torah Dialogue</b> 10:00 a.m.
<b>2</b> <b>Spiritual Exploration Group: Mindful Walk</b> 10:00 a.m. at Pennypack Trail	<b>3</b>	<b>4</b> <b>Operations Committee Meeting</b> 7:30 p.m..	<b>5</b>	<b>6</b>	<b>7</b> <b>Early Learning Center</b> <b>erev Shabbat Service with Rebecca Schwartz</b> 10:00 a.m.  <b>"Pride" erev Shabbat Service</b> 7:30 p.m.	<b>8</b> <b>Shabbat Service and Torah Dialogue</b> 10:00 a.m.  <b>Shavuot - Confirmation Service</b> 7:00 p.m.
<b>9</b> <b>Shavuot - Yizkor Service</b> 10:00 a.m.	<b>10</b>	<b>11</b>	<b>12</b> <b>Worship Enhancement Committee Meeting</b> 7:30 p.m.	<b>13</b> <b>Early Learning Center</b> Closing Ceremony 4:30 p.m. - Program 5:00 p.m. - Picnic	<b>14</b> <b>Early Learning Center</b> <b>erev Shabbat Service with Rabbi Berkowitz</b> 10:00 a.m.  <b>erev Shabbat Service on the Meadow</b> Honoring our High-School Graduates 6:30 p.m.	<b>15</b>
<b>16</b>	<b>17</b> <b>Early Learning Center</b> Camp Begins 8:00 a.m.	<b>18</b>	<b>19</b> <b>Early Learning Center</b> Israeli Dance 9:30 a.m.	<b>20</b>	<b>21</b> <b>erev Shabbat Service on the Meadow</b> 6:30 p.m.	<b>22</b>
<b>23</b> <b>Spiritual Exploration Group: Mindful Walk</b> 10:00 a.m. at Pennypack Trail	<b>24</b>	<b>25</b>	<b>26</b>	<b>27</b>	<b>28</b> <b>"Simcha" Fourth-Friday</b> <b>erev Shabbat Service on the Meadow</b> 6:30 p.m.	<b>29</b>
<b>30</b>						

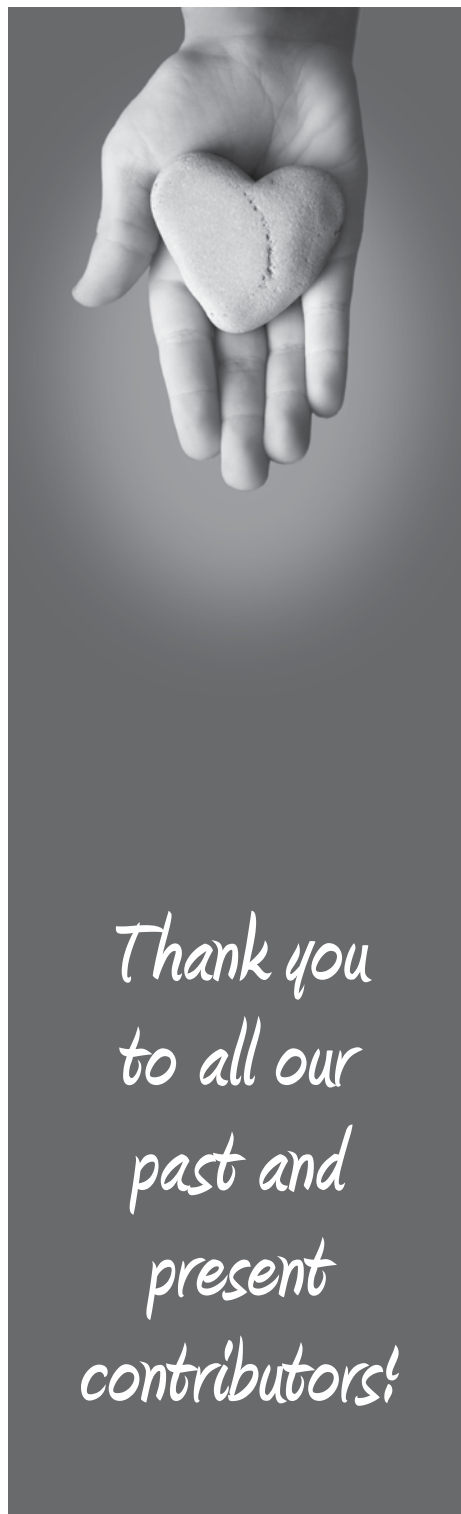
The Early Learning Center held a *Purim* Party on March 21 for the children. There were kings, queens, super heros, three blind mice, several princesses, and even a unicorn and a dinosaur in attendance.



# Kol Ami Contributions

---

We thank the following individuals for their generous donations to Kol Ami funds. To make a donation, send it to Congregation Kol Ami, 8201 High School Road, Elkins Park, PA 19027, and indicate to which fund it should be applied.



## **ADULT EDUCATION FUND**

*Michael Chernoff*

## **ARTS & CULTURE FUND**

*Michael Chernoff*

*Nancy Alter*

In Memory of:

**Casimir Pokorny**

*Fran Surkin*

## **ONEG SHABBAT FUND**

In Honor of:

**Special birthday of Abby Binder**

*Jane Tausig*

**Our Special Anniversary**

*Daniel and Linda George*

## **RABBI'S DISCRETIONARY FUND**

*Michael Chernoff*

*Merion Mercy Academy*

In Honor of:

**Rabbi Leah Berkowitz**

*Stephen, Denise, Ben, and Alyssa Novick*

In Memory of:

**Hubert Rice**

*Michelle McConnon*

*Craig and Sharon Myers*

## **SYNAGOGUE FUND**

**Elijah's Plate**

*William Hyman and Janine Pratt*

*Carole Jacoby*

*John Michel and Jane Finkle*

*Cory Newman*

*Jeffrey Perry*

*Elaine Stevens*

*Alan and Cheryl Wohlstetter*

In Honor of:

**Engagement of Russell Cooke  
and Nancy Kirsh**

*Alan and Elaine Gershenson*

**Rebecca Schwartz and her  
excellent performance in  
"Sing Hallelujah"**

*Michael Chernoff and Rhea Applebaum*

In Memory of:

**Sol Flaxman**

*Alvin Turetsky*

**Hubert Rice**

*Lois Bender*

**Morris Rosenblatt**

*Craig and Sharon Myers*

**Sadie Zulkow**

*Craig and Sharon Myers* ■