



## **WORSHIP SERVICES**

**FRIDAY, Nov. 2, at 7:30 p.m.**

"First-Friday" *erev Shabbat* Service

**SATURDAY, Nov. 3, at 10:00 a.m.**

*Shabbat* Service and *Torah* Dialogue

**SUNDAY, Nov. 4, at 1:00 p.m.**

Healing Service

**FRIDAY, Nov. 9, at 7:30 p.m.**

Installation of Rabbi Berkowitz  
*erev Shabbat* Service with Adult Choir

**SATURDAY, Nov. 10, at 10:00 a.m.**

Installation of Rabbi Berkowitz  
*Shabbat* Service and *Torah* Dialogue

**FRIDAY, Nov. 16, at 7:30 p.m.**

New Member *erev Shabbat* Service  
with Student Choir

**SATURDAY, Nov. 17, at 10:00 a.m.**

*Shabbat* Service and *Torah* Dialogue

**FRIDAY, Nov. 23, at 7:30 p.m.**

*erev Shabbat* Service

**SATURDAY, Nov. 24, at 10:00 a.m.**

*Shabbat* Service and *Torah* Dialogue;  
Carol Nemeroff will give the *dvar Torah*

**FRIDAY, Nov. 30**

6:00 p.m. - "Fun-for-Kids *Hanukkah*"  
*erev Shabbat* Service

7:30 p.m. - Transgender Day of  
Remembrance *erev Shabbat* Service

**SATURDAY, Dec. 1, at 10:00 a.m.**

*Shabbat* Service and *Torah* Dialogue

**FRIDAY, Dec. 7, at 7:00 p.m.**

*Hanukkah erev Shabbat* Service with  
Student Choir

*continued page 2*

## **TOGETHER WE CELEBRATE! (NOVEMBER 9-11)**

We searched, we selected, we celebrated Rabbi Holin, and then we welcomed Rabbi Berkowitz, together. With Rabbi Berkowitz, we have now attended services in the meadow, during High Holy Days, and in the *Sukkah*, together. It is now time to celebrate the formal Installation of Rabbi Leah Rachel Berkowitz as Kol Ami's second rabbi in our 25-year history – together. You are cordially invited to attend a weekend of events.



**On Friday, November 9, at 7:30 p.m.,** there will be an *erev Shabbat* Service, followed by an extended *Oneg*. Joined by our Adult Choir, this is when we will formally install Rabbi Leah Berkowitz.

Two important people who inspired Rabbi Berkowitz will be our guest speakers. The Installation Address will be offered by Rabbi Mayer Selekman, the childhood rabbi of Rabbi Berkowitz. And the service will also feature Cantor Patty Kaplan, the Rabbi Berkowitz's childhood cantor.

The events on Saturday promise to be another memorable day in our Congregation's history.

**On Saturday, November 10, at 10:00 a.m.,** there will be a *Shabbat* Service with a community lunch to follow.

We will be led in our *Torah* Study by Rabbi Andrea Weiss, PhD. Dr. Weiss is the Jack, Joseph and Morton Mandel Provost at Hebrew Union College-Jewish Institute of Religion. Previously, she served as Associate Professor of Bible at the New York campus, where she taught Rabbi Berkowitz and was her thesis advisor. Dr. Weiss also served as Associate Editor of *The Torah: A Women's Commentary* (URJ Press, 2008), which won the Jewish Book Council's 2008 Everett Family Foundation Jewish Book of the Year Award.

**On Sunday, November 11, at 11:00 a.m.,** our Early Learning Center and Religious School students, along with their families will participate in a celebration. All are welcome to attend.

**Please remember to RSVP by November 2** to [execdir@kolamielkinspark.org](mailto:execdir@kolamielkinspark.org), and join us for some or all of this celebratory weekend! ■

## WORSHIP SERVICES (cont'd from page 1)

**SATURDAY, Dec. 8, at 10:00 a.m.**

*Shabbat Service and Torah Dialogue*

**FRIDAY, Dec. 14, at 7:30 p.m.**

*“Second-Friday” erev Shabbat Service with Cantor Leon Sher and Adult Choir*

**SATURDAY, Dec. 15, at 10:00 a.m.**

*Shabbat Service and Torah Dialogue with grades 7-12 (lunch to follow)*

**FRIDAY, Dec. 21, at 7:30 p.m.**

*erev Shabbat Service*

**SATURDAY, Dec. 22, at 10:00 a.m.**

*Shabbat Service and Torah Dialogue*

**FRIDAY, Dec. 28 at 7:30 p.m.**

*erev Shabbat Service*

**SATURDAY, Dec. 29, at 10:00 a.m.**

*Shabbat Service and Torah Dialogue; Carol Nemeroff will give the *dvar Torah* ■*

## COMMITTEE MEETINGS

### Caring Congregants Committee

Tuesday, December 11, at 6:00 p.m.

Home of Dan and Linda George

Chairs: Linda George, 215-782-1413, and Elaine Gershenson, 215-887-3994

### Inclusion Committee -

#### LGBTQ Initiative

Sunday, November 18 at 11:00 a.m.

Chair: Morgan Selkirk, 914-671-3137

### Interfaith Relationship Dialogue - Latke Event

Sunday, December 2, at 2:00 p.m.

Chairs: Joel Edelstein and Betsy

McKinstry, 215-182-1704

### Shomrei Adamah (Environmental Stewardship)

Tuesday, December 4, at 7:30 p.m.

Chair: Mark Kaplan, 215-635-2920

### Spiritual Exploration Group

Mon., Nov. 26 & Dec. 17, at 7:00 p.m.

Chairs: Janet Falon, 215-635-1698, and Meryle Gurmankin, 215-464-2466

### Worship Enhancement Committee

Sunday, December 9, at 12:00 p.m.

Chairs: Mindy Levy, 215-885-3672 and William Shapiro, 215-517-8666 ■

## FROM THE INTERIM DIRECTOR OF EDUCATION

Dear Parents,

Your children are “rocking it” at Kol Ami! They are working on Hebrew, prayers, history, Biblical characters, and so much more. Many parents depend on the faculty of the Religious School to guide their children’s religious education. And as educators, we depend on the connection with the family to spell success in Religious School. So tell us what motivates or excites your child, what sparks their curiosity, and what frustrates them? If your child makes comments about the school, we need to hear it as quickly as possible.

November is a great month to participate in *Shabbat* at Kol Ami. The curriculum delves into *Shabbat* practice in every grade. By the end of the year, students will be able to explain and discuss the meaning of *Shabbat* on many levels. They will learn that *Shabbat* is a time to “just be.” It is a time to stop and appreciate life. It provides a chance for families to spend time together, and it provides an opportunity to rest and reflect on relationships, love, creation, as well as to think about priorities for the upcoming week. Consider trying this: Prepare a *Shabbat* meal some time together as a family during the week. It will result in a less hectic Friday night – and you will have gotten to spend twice as much time together! Consider, as well, having each family member share a thought or a favorite happening of the week during *Shabbat* dinner.

I have saved the best *Shabbat* idea for last: As a family, come to Kol Ami for *Shabbat* services. Check our website and try it this month.

### NOVEMBER IS A GREAT MONTH TO TEACH ALL ABOUT TZEDAKAH AND THANKSGIVING.

*Tzedakah* refers to acts of righteousness and justice. Our tradition stresses that we are obligated to give *tzedakah*. At our Religious School, we try to encourage students, parents, and faculty to become more engaged in pursuing *tikkun olam* (repairing the world). Help your students do something meaningful by to setting aside a few coins in your home Kol Ami *Tzedakah* box. Our students will study different organizations and then decide which to support. We also teach the values of *Tzedakah* – like gratitude and empathy – using “big ideas” and age-appropriate concepts and teaching by example.

In November, take the idea home and to the Thanksgiving table. Imagine that the Pilgrims, were much like the *B’nai Yisrael* (the children of Israel) searching for freedom – and then they are extremely grateful for the land and the harvest. Sound familiar?

Thanksgiving is also a great time to place a *Tzedakah* box on the holiday table and share your thoughts. Try incorporating *Hamotzi* and *Bircat Hamazon* (blessings before and after the meal) into your celebration.

This month, put a few coins away each day to give as a collective family. And during your meal, discuss your family “*tzedakah*.” Additionally, check out PJ Library (<https://pjlibrary.org>); joining is free and there are excellent books about *Tzedakah*.

Speaking of *tzedakah*, Kol Ami is going to SHARE on Sunday, November 18, offering a good opportunity to activate your family’s commitment to *tzedakah*. **DON’T FORGET: there is NO SCHOOL on November 21 or 25.**

*continued page 3*

# FROM THE RABBI'S STUDY

Rabbi Leah R. Berkowitz

## WHAT IS AN INSTALLATION, EXACTLY?

When we hear the word “installation,” we might think more about power tools or Ethernet cables than we do about rabbis. As I’m not sure when Kol Ami would have last held an installation service, I’ve been getting a lot of questions about what a rabbinical installation entails.

A rabbinical installation is a combination of a *Shabbat* service, an inauguration, and an episode of This is Your Life. There will be prayers and singing, speeches, and special guests throughout the weekend. There will be good food and, hopefully, a little fun.

An installation is an opportunity to formally celebrate this moment in the life of our congregation. It is a chance to welcome the new rabbi—something you’ve already been doing for quite some time—but also a chance to commemorate the transition of leadership from one rabbi to the next. It is a time to celebrate the noble and diligent work of the Search and Transition committees in preparing to bring us together.

This celebration is also an opportunity for me to honor all the people who shaped me into the rabbi I am today. Some of my family will be in attendance, as will many clerical colleagues and close friends.

I am particularly honored and blessed that my childhood clergy will be present with us for this occasion. Rabbi Mayer Selekman named me when I was a baby, officiated at my *bat mitzvah*, and taught my confirmation class, where, for many weeks, I was the only student. Cantor Patty Kaplan directed me in the Temple Sholom choirs from when I was five years old, even giving me special permission to sing with the adult choir the year before I became *bat mitzvah*. She taught me how to chant from the *Torah*, and even gave me my first job, coincidentally, tutoring other *b’nai mitzvah*. She also fed me many afternoon snacks, as I used to take violin lessons at her house.

On *Shabbat* morning, another mentor of mine, Rabbi Andrea Weiss, will be with us. Rabbi Weiss is the Provost of Hebrew Union College-Jewish Institute of Religion, where I studied and was also ordained. As my Bible professor, Rabbi Weiss taught me about the importance of the prophetic books. She also gave me the opportunity to work with her as an intern on The Torah: A Women’s Commentary, and advised me as I wrote my thesis on biblical women. She has always been a source of professional and personal wisdom for me, and I’m so excited that you will get to learn from her on *Shabbat* morning.

Each of these teachers mentored me in a unique way, and I am so grateful to be able to honor them all, ask for their blessing at this sacred moment, and to share their wisdom with you.

Most of all, I am excited to celebrate this moment with my new community here at Kol Ami. Though much of the “installing” will be in the hands of rabbis and cantors, you will also have a special role to play in the service. There will be moments in which I ask your blessing as I go forward as the rabbi of Kol Ami. I already feel blessed each day that you chose me as your rabbi, and I am so looking forward to us being able to celebrate that choice together. ■

## INTERIM DIRECTOR OF EDUCATION

(continued from previous page)

### LEARNING EXPERIENCES AND MITZVAH OPPORTUNITIES ABOUND IN DECEMBER

Then we move into winter, and the potential for bad weather. Remind your kids to be careful outside and inside the building, in situations such as slush. If there is a school closing, REMIND will text you, e-mails will go out, and the school phone message should indicate the information.

*Hanukkah* falls on the 24th of *Kislev* (December 2), and lights brighten our households each evening. Eight days are observed because when the Greeks entered the Sanctuary they contaminated all the oils, leaving only one remaining container of pure oil. According to the story, it contained only enough to burn one day; miraculously, the oil burned for eight days. Israel eventually prevailed against all enemies and on the 25th day of the month of *Kislev* a festival begins. We rejoice each night and teach our children to remember the miracle of the oil and freedom from all enemies. We eat food fried in oil like *latkes* and *sufganiyot* to commemorate the miracle of the *Hanukkah*.

Did you know that the *hanukkiyah* should be placed in a window facing the street for all to see? The *hanukkiyah* should have all the candles or wicks on the same level. But the additional candle, the *shamash*, is the light used to light the other candles. There are different customs regarding the placement of candles; some follow right, some left. The *hanukkiyah* candles should be lit before the *Shabbat* candle-lighting takes place.

*Hanukkah* will be studied and celebrated when we return to Kol Ami right after Thanksgiving. We have a few great *Hanukkah* surprises planned

*continued page 5*



## SYNAGOGUE LEADERSHIP

### Main Office

215-635-3110

### Rabbi Leah R. Berkowitz

215-635-4182

### Rabbi Elliot Holin, Founding Rabbi

215-882-0017

### Ruben Honik, President

215-327-9166

### Barbara Fink, Vice President

215-886-2297

### Jeffrey Margasak, Vice President

215-635-9332

### Lorie B. Slass, Secretary

215-635-0920

### Lisa Landau, Treasurer

215-635-9996

## PROFESSIONAL STAFF

IN RESPECT OF SHABBAT, THE OFFICE  
CLOSES AT 3:00 P.M. ON FRIDAYS.

### Elaine Stevens, Executive Director

215-635-3110

### Susan Levey

#### Interim Director of Education

215-635-7106

### Sheri Cutler

#### Early Learning Center Director

215-635-4180

### Rebecca Schwartz, Cantorial Soloist

215-572-6094

Please send correspondence to:

Congregation Kol Ami

8201 High School Road

Elkins Park, PA 19027

Website: [www.kolamielkinspark.org](http://www.kolamielkinspark.org)

Facebook: <https://www.facebook.com/kolamielkinspark>

## BULLETIN SUBMISSIONS

Please send articles by the fifth of the previous month to **Janet Falon** at [jfalton@english.upenn.edu](mailto:jfalton@english.upenn.edu). Articles may be edited as needed. ■



## LIGHTING THE CANDLES AND SAYING THE BLESSINGS OVER THE HANUKKIAH

### FIRST NIGHT OF HANUKKAH (SUNDAY, DECEMBER 2)

The *shamash*, or serving candle, is lit first and is used to light the other candles every evening. The *shamash* is noticeable because it is situated higher than, or in front of, the other candles. Each night of *Hanukkah*, the candles are placed in the *hanukkiyah* from right to left (the same way in which Hebrew is read) but are lit from left to right.

ON THE FIRST NIGHT ONLY, the *Sheh'beh'chyanu* is recited or sung:

ברוך אתה יי אלהינו מלך העולם שהחיינו וקיימנו והגיענו לזמן הזה

*Baruch Atah Adonai, Elobeinu Melech ha'olam*

*Sheh'beh'chyanu v'ki'y'manu v'hig'yanu*

*lazmahn hazeh*

Blessed are You, O Lord our God, Ruler of the universe,  
Who has given us life, sustained us, and brought us to this time.

ON EACH NIGHT, the following blessings are recited or sung:

ברוך אתה יי אלהינו מלך העולם אשר קדשנו במצותיו וצונו  
להדליק נר של חנוכה

*Baruch Atah Adonai, Elohiynu Melech ha'olam*

*asher kid'shanu b'mitzvotav v'tzi'vanu l'hadlik neir*

*shel Hanukkah*

Blessed are You, O Lord our God, Ruler of the universe,  
Who sanctifies us through *mitzvot* and commands us to kindle  
the candles of *Hanukkah*.

ברוך אתה יי אלהינו מלך העולם שעשה נסים לאבותינו בימים ההם בזמן הזה

*Baruch Atah Adonai, Elobeinu Melech ha'olam*

*Sheh'asah neisim l'avo'taynu ba'yameem ha'hame*

*bahz'mahn hazeh*

Blessed are You, O Lord our God, Ruler of the universe,  
Who performed miracles for our ancestors in those days,  
as at this time. ■

## ANOTHER WONDERFUL SUKKOT AT THE FARM

Thirty Kol Ami members, CSA members, family, and friends of all ages came together to celebrate *Sukkot* on the Lapp Family Maple Lawn Farm on September 29. We helped the farmers prep the lettuce for the week's pickup, then participated in blessing the *lulav* and *etrog*, our food, and being together.

The Lapps are Amish farmers, one of 120 Amish and Mennonite farms growing organic produce for Lancaster Farm Fresh Cooperative. They are a sweet, loving family who have embraced us, and we, them.

Alyssa Scharff, our CSA coordinator at Lancaster Farm Fresh, brought local cider and apples. Everyone else brought something delicious for the potluck lunch, followed by a feast of local ice creams.

After the meal, Aaron Lapp took us into the fields to learn about his farm and to pick some veggies. This is a beautiful tradition we cherish each year. We truly feel the essence of *Shabbat* when we are at the Lapp's farm and cherish the relationship of mutual respect we have created together. They have already invited us back next year.

Mark your calendar now: Celebrate our 12th annual Hazon CSA-sponsored family friendly *Tu B'Shvat Seder* on Sunday, January 27, from 5:30 to 8:00 p.m. Learn, be inspired, sing, taste symbolic fruits and nuts, drink four cups of wine, and enjoy a delicious vegetarian soup-and-salad dinner as we celebrate the New Year of the Trees. ■



## INTERIM DIRECTOR OF EDUCATION

(continued from page 3)

for December 2, 5, 7, and 9. Watch for more information.

On December 9, Grades 3 and 4 will travel to the Abramson Center as a *Hanukkah mitzvah* and Project Shema.

On December 15, Grades 7 through 12 will come for *Shabbat* morning services and lunch.

On December 16, Grades K, 1, and 2 travel to the Jewish Relief Agency to pack meals. This is another *Hanukkah*-winter *mitzvah* in which our Kol Ami families are involved.

During the afternoon, RAK-DAN sets up for the post-*Hanukkah* rock-and-roll hop with the Junior Youth Group (Grades 3 to 6) with lunch and fun and games.

The last class before winter break is December 19. Kol Ami Religious School students return to class on January 6, 2019.

Susan Levey  
215-635-7106 ■



## CONDOLENCES

We extend our condolences in loving memory of:

**Reta Eisenberg**  
*mother of Stewart (Sally) Eisenberg*

May her memory forever be a blessing in the midst of our People. ■



## WELCOME TO OUR NEWEST MEMBERS



Kol Ami is so pleased to welcome new members **Nancy Feldman Kirsh** and **Russell Cooke** of Rydal. An inter-faith couple, Nancy and Russell were introduced several years ago after both lost spouses to long illnesses.

Nancy and Russell learned about Kol Ami when their friends, members Jane Tausig and Abby Binder, invited them to attend services. Nancy and Russell attended several times and were impressed by the “joyous, welcoming” atmosphere. Now they are looking to become active in the Kol Ami community.

Russell was a newspaper journalist for most of his career; now he has a second career as a speechwriter. Nancy, now retired, was a healthcare and nonprofit executive. They each have children and grandchildren who live out of town.

Nancy and Russell enjoy traveling, theater, music, the outdoors, and spending time with family and friends. We are so glad that Nancy and Russell found each other and found us! The Kol Ami family welcomes them with open arms. ■

## EARLY LEARNING CENTER

The children gathered under the *sukkah* and, with a little assistance, sang and swayed with the *lulav* and *etrog*.



**KOL AMI BOARD OF TRUSTEES:** Back row - Gary Turetsky, Barry Boise, Lisa Landau, Lorie Slass, Jeff Margasak, Nigel Blower, and Justin Krik; Front row - Ruben Honik, Barb Fink, Janine Pratt, Shelley Chamberlain, Ben Adams, and David Hyman; (Not shown - David Baker, Rachel Ezekiel-Fishbein, Morgan Selkirk, Robin Shane, and Tamara Sniad) ■

2018-2019

## STUDY AT THE *SHUL* FOR ADULTS

RSVP TO ELAINE STEVENS AT 215-635-3110 UNLESS OTHERWISE NOTED. THERE IS A \$50 FEE FOR NON-MEMBERS TO ATTEND ANY OF THESE COURSES.



### Defending America: The United States Security Strategy

**Mondays at 7:00 p.m.**

**November 5, 12 & 19**

**Instructor: Ira Cooperman**

The four pillars or themes of the current Administration's security and defense strategy are:

- Protect the homeland,
- Promote America's prosperity,
- Preserve peace through strength, and
- Advance America's influence in the world.

This class will examine these themes and compare them with the strategies of the former occupants of the White House. Do they make sense to you? Do you agree with these goals? Come join our discussion of our national-security strategies as we consider what should be our nation's security goals.

Ira Cooperman lectures for retired adults on national security topics at Reform Congregation Keneseth Israel, Abington Public Library, and the Center for Life Enrichment in Highlands, NC. As a former Air Force intelligence officer, Cooperman has worked with the CIA and the NSA and has been invited to give talks at the United States Military Academy at West Point and at the State University of New York. He has been a reporter for The Los Angeles Times and have been published as well in The New York Times and other publications. He is a graduate of San Francisco State University and has done graduate work at Harvard. ■

**A Hazon Seal of Sustainability Initiative**  
presented by the Shomrei Adamah  
Environmental Stewardship  
Committee at Congregation Kol Ami



### Introduction to Backyard Beekeeping

**Tuesdays; November 6 & 13**

**from 7:00 to 9:00 p.m.**

**Instructor: Jane Tausig**

Backyard beekeeping is fascinating, fun, and good for the environment. These "To Bee or Not to Bee": Honeybees and the Environment Introductory classes will explore the life cycle of a honeybee, life inside the hive, tasks required of a backyard beekeeper, and threats to honeybees' health and well-being using a combination of media, discussion, and "show-and-tell" activities.

Learn how to set up your own backyard beehive! Timing of the class allows for ordering bees in time for spring 2019. Class size is limited to 15 people, on a first-come, first-served basis.

Contact Jane at [jetausig@gmail.com](mailto:jetausig@gmail.com) with questions and/or to sign up.

**From home...**



**To...**



# Kol Ami Events

## SHARE FOOD PROGRAM: SELF-HELP AND RESOURCE EXCHANGE

November 18, December 9, February 10,  
and March 3 from 1:00 to 3:00 p.m.  
at 2901 W. Hunting Park Avenue, Philadelphia



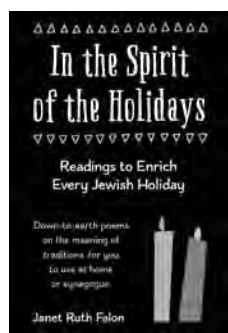
Volunteers help SHARE reduce hunger. Sort, organize, and pack boxes of non-perishable food for those in need in Philadelphia. Seasonal gardening. Ages 8 and up – all welcome. It's a family friendly social action afternoon.

"If I am not for myself, who will be for me? But if I am only for myself, who am I? If not now, when?"

— *Hillel. Ethics of the Fathers, 1:14*

The SHARE Food Program is a nonprofit organization serving a regional network of community organizations engaged in food distribution, education, and advocacy. Questions: Call Shelley Chamberlain at 215-680-7408. RSVP and join us!

## CELEBRATE WITH JANET FALON ON THE PUBLICATION OF HER NEW BOOK OF POEMS ABOUT THE JEWISH HOLIDAYS



**Sunday, December 9  
from 1:00 to 3:00 p.m.**

Join Kol Ami member Janet Falon to celebrate the publication of her new book of poems about the Jewish holidays entitled In the Spirit of the Holidays. The profit from books sold at this event will be donated to Kol Ami.

These 146 poems – including those she has written and read aloud at our *Yom Kippur* service for the past several years – have been created over the past 30 years. Janet wants to celebrate with Kol Ami because of all the enthusiasm and support for her writing that's been expressed by synagogue members and staff.

The poems are about most of the Jewish holidays, including a less well-known holiday such as *Tu b'Shvat*, which is sometimes known as Jewish Valentine's Day. They are written

in Janet's down-to-earth, inquisitive, and often humorous "voice." Some poems grapple with traditional rituals and beliefs, while others question Jewish practice as part of an ongoing quest for meaning.

There will be refreshments served at this party, books will be available for purchase, and Janet will do a short reading. If you have any questions about the book or the event, contact Janet at 215-635-1698 or at [janetfalon@gmail.com](mailto:janetfalon@gmail.com).

## AN EREV SHABBAT TREAT



**Friday, December 14, at 7:30 p.m.**

Join us on as we welcome back one of our favorite artists-in-residence, Cantor Leon Sher. Cantor Sher and Rebecca will be joined by our wonderful Adult Choir for an evening of soulful prayer in song.

## JOIN THE SPIRITUAL EXPLORATION GROUP

**Two programs – a feminist interpretation of the Bible and a closer look at *shabbat* prayers – led by congregants are open to all!**

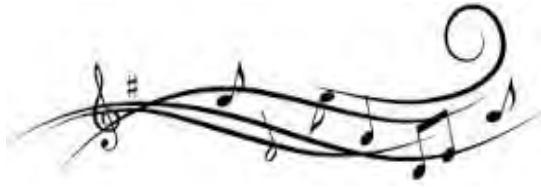
- A feminist interpretation of the Bible, focusing on Miriam and Eve, will be offered by Meryle Gurmankin, on Monday, November 26, from 7:00 to 8:30 p.m.
- On December 17, also from 7:00 to 8:30 p.m., Carol Nemeroff will lead a program about the key *Shabbat* prayers and what they're all about.

## UPCOMING LOCA EVENTS

Attention Ladies of a Certain Age (LOCAs): here's what's coming up for 2018-19. We hope you can join us for some or all of these events.

- **Friday; December 14, February 1, April 5, and May 3 at 5:30 p.m.:** *erev Shabbat* dinner at either Marco Polo or Szechuan Mandarin, followed by services
- **February date TBD:** Trip to the Philadelphia Art Museum to see the "Fabulous Fashion: From Dior's New Look to Now" exhibit (details TBA)
- **Sunday, April 28, at 2:00 p.m.:** Tea party at the home of Jane Finkle. Fine tea, delicious goodies, and excellent conversation (details TBA) ■





## ***Congregation Kol Ami Members "Our House" Concert***

*In memory of Sara Chernoff, featuring The Avanti String Quartet  
Philadelphia Orchestra members:*

***Miyo Curnow, violin***

***William Polk, violin***

***Kerri Ryan, viola***

***Kathy Picht-Read (our very own Kol Nidrei cellist)***

## ***An Evening of Classical Music***

***Sunday, November 4, 2018***

***5:00 to 7:00 p.m.***

***Congregation Kol Ami Lobby***



*We invite you to a "Congregants Connection"  
house concert in our lobby.*

*Enjoy light hors d'oeuvres, home-baked desserts,  
and your BYOBeverage  
from 5:00 - 5:45 p.m.*

***Concert begins at 5:45 p.m.***

*Please join us!*

*There's no charge, but an RSVP is required  
ensuring plenty of food for all.*

*Don't forget -- it's BYOB!*

*RSVP by November 1 to Elaine Stevens  
at 215-635-3110 or [execdir@kolamielkinspark.org](mailto:execdir@kolamielkinspark.org).  
Need a ride? Let Elaine know and we'll arrange!*

## **HIGH HOLY DAY APPEAL**

Thank you to the following individuals for their generosity during our High Holy Day Appeal:

Ben Adams and Gail Korostoff  
Guy and Karol Appel  
Bruce and Ellen Asam  
Andrew August and Barbara Fink  
David Baker and Irene Levy Baker  
Nigel Blower and Julie Cohen  
Barry and Allison Boise  
David and Shelley Chamberlain  
Michael Chernoff  
Jeffrey Cohen and Ellen Friedman  
Ira Cooperman  
Joel Edelstein and Elizabeth McKinstry  
William England and Lorie Slass  
Janet Felgoise  
Alan and Elaine Gershenson  
Mitchell and Jane Goldenberg  
Raymond and Elizabeth Grenald  
Karen Gurmankin  
David and Phyllis Harrison  
Ruben Honik  
David Hyman  
William Hyman and Janine Pratt  
Eric and Adena Johnston  
Robert C. Jubelirer  
Mark and Karin Kaplan  
David Katz  
Lisa Landau  
Michael Levin  
Leon and Harriet Lubowitz  
Benjamin and Shari Manis  
Gabriel and Orly Maravankin  
Jeffrey and Robynn Margasak  
Cory Newman  
Vincent Pace and Jane Katzer Pace  
Cyana, Roxy, and Luna Perry  
Steven Rosenberg  
Marshall and Ilene Schafer  
Robert Schiowitz and Ronit Sugar  
Joel and Rebecca Schwartz  
Gary Sender  
Barbara Sklar  
Elaine Stevens  
Erik and Jennifer Streitwieser  
Jensen Toth  
Alvin Turetsky  
Gary and Cheryl Turetsky  
David and Meryle Twersky  
Alan and Cheryl Wohlstetter ■

# KOL AMI NOVEMBER 2018 AT A GLANCE

Sunday	Monday	Tuesday	Wednesday	Thursday	Friday	Saturday
				1	2 Early Learning Center <i>erev Shabbat</i> service with Susan Levy 10:00 a.m. "First-Friday" <i>erev Shabbat</i> Service 7:30 p.m.	3 <i>Shabbat</i> Service and <i>Torah</i> Dialogue 10:00 a.m.
4 Religious School 10:00 a.m. - Noon 10:00 a.m. - Gr 4 Parent <i>Bar/Bat Mitzvah</i> Meeting 12:00 p.m. - Student Choir Rehearsal Adult Choir Rehearsal 10:25 a.m. Healing Service 1:00 p.m. "Our House" Concert 5:45 p.m. The Avanti String Quartet (5:00 p.m. - Light Hors d'oeuvres and BYOBeverage)	5 "Study at the Shul" for Adults with Ira Cooperman 7:00 p.m.	6 Early Learning Center Fitness 9:30 a.m.	7 Religious School 4:00 p.m. and 6:00 p.m.	8 Early Learning Center Yoga 9:30 a.m.	9 Early Learning Center <i>erev Shabbat</i> service with Rebecca Schwartz 10:00 a.m. Installation of Rabbi Berkowitz <i>erev Shabbat</i> Service with Adult Choir 7:30 p.m.	10 Installation of Rabbi Berkowitz <i>Shabbat</i> Service and <i>Torah</i> Dialogue 10:00 a.m.
11 Religious School 10:00 a.m. - Noon Adult Choir Rehearsal 10:25 a.m. Installation of Rabbi Berkowitz 11:00 a.m.	12 Early Learning Center Music 9:30 a.m. "Study at the Shul" for Adults with Ira Cooperman 7:00 p.m.	13 Early Learning Center Fitness 9:30 a.m.	14 Religious School 4:00 p.m. and 6:00 p.m. 7:00 p.m. - Gr 10 Student and Parent Meeting	15	16 Early Learning Center <i>erev Shabbat</i> Service with Rabbi Berkowitz 10:00 a.m. New Member <i>erev Shabbat</i> Service with Student Choir 7:30 p.m.	17 <i>Shabbat</i> Service and <i>Torah</i> Dialogue 10:00 a.m.
18 Religious School 10:00 a.m. - Noon 12:00 p.m. - Student Choir Rehearsal Adult Choir Rehearsal 10:25 a.m. Inclusion Committee - LGBTQ Initiative Meeting 11:00 a.m. Social Action Committee SHARE Food Program Philadelphia 1:00 p.m.	19 "Study at the Shul" for Adults with Ira Cooperman 7:00 p.m.	20	21 Religious School CLOSED	22 Early Learning Center CLOSED	23 Early Learning Center CLOSED <i>erev Shabbat</i> Service 7:30 p.m.	24 <i>Shabbat</i> Service and <i>Torah</i> Dialogue with Carol Nemeroff giving the <i>dvar Torah</i> 10:00 a.m.
25 Religious School CLOSED	26 Early Learning Center Music 9:30 a.m. Spiritual Exploration Group Meeting 7:00 p.m.	27 Early Learning Center Fitness 9:30 a.m.	28 Religious School 4:00 p.m. and 6:00 p.m.	29 Early Learning Center Yoga 9:30 a.m.	30 Early Learning Center <i>erev Shabbat</i> Service with Rebecca Schwartz 10:00 a.m. "Fun-for-Kids <i>Hanukkah</i> " <i>erev Shabbat</i> Service 6:00 p.m. Transgender Day of Remembrance <i>erev Shabbat</i> Service 7:30 p.m.	

# KOL AMI DECEMBER 2018 AT A GLANCE

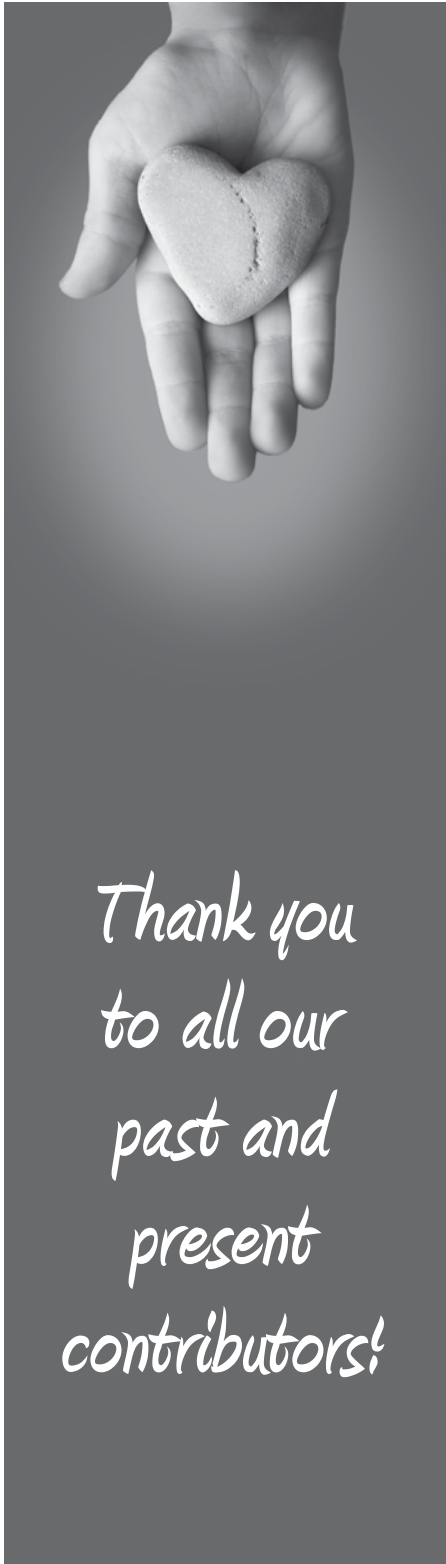
Sunday	Monday	Tuesday	Wednesday	Thursday	Friday	Saturday
						<b>1</b> <b>Shabbat Service and Torah Dialogue</b> 10:00 a.m.
<b>2</b> <b>FIRST NIGHT OF HANUKKAH</b> Religious School 10:00 a.m. - Noon 10:00 a.m. - Gr 6 Student and Parent <i>Bar/Bat Mitzvah</i> Meeting 11:00 a.m. - <i>Dreidel</i> Event 12:00 p.m. - Student Choir Rehearsal Adult Choir Rehearsal 10:25 a.m. Interfaith Relationship Dialogue - <i>Latke</i> Event 2:00 p.m.	<b>3</b>	<b>4</b> Early Learning Center Fitness 9:30 a.m.  <i>Shomrei Adamah</i> (Environmental Stewardship) Committee Meeting 7:30 p.m.	<b>5</b> Religious School 4:00 p.m. and 6:00 p.m.	<b>6</b> Early Learning Center Yoga 9:30 a.m.	<b>7</b> Early Learning Center <i>Hanukkah</i> Sing-a-long <i>erev Shabbat Service</i> with Rebecca Schwartz 10:00 a.m.  <i>Hanukkah erev Shabbat Service</i> with Student Choir 7:00 p.m.	<b>8</b> <b>Shabbat Service and Torah Dialogue</b> 10:00 a.m.
<b>9</b> Religious School 10:00 a.m. - Noon 10:00 a.m. - Gr 3-4 to Abramson Center Adult Choir Rehearsal 10:25 a.m. Worship Enhancement Committee Meeting 12:00 p.m. Janet Falon Book Launch 1:00 p.m. Social Action Committee Share Food Program Philadelphia, PA 1:00 p.m.	<b>10</b> Early Learning Center Music 9:30 a.m.	<b>11</b> Early Learning Center Fitness 9:30 a.m.  Caring Congregants Committee Meeting 6:00 p.m. Home of Linda and Dan George	<b>12</b> Religious School 4:00 p.m. and 6:00 p.m.	<b>13</b>	<b>14</b> Early Learning Center <i>erev Shabbat Service</i> with Rabbi Berkowitz 10:00 a.m. LOCA Dinner at Szechuan Mandarin 5:30 p.m.  "Second-Friday" <i>erev Shabbat Service</i> with Cantor Leon Sher and Adult Choir 7:30 p.m.	<b>15</b> <b>Shabbat Service and Torah Dialogue</b> with Grades 7-12 10:00 a.m. (lunch to follow)
<b>16</b> Religious School 10:00 a.m. - Noon 10:00 a.m. - Gr K-2 to Jewish Relief Agency 12:00 p.m. - Student Choir Rehearsal 12:30 p.m. - Junior Youth Group Event (Gr 3-6) Adult Choir Rehearsal 10:25 a.m.	<b>17</b> Spiritual Exploration Group Meeting 7:00 p.m.	<b>18</b> Early Learning Center Fitness 9:30 a.m.	<b>19</b> Religious School 4:00 p.m. and 6:00 p.m.	<b>20</b> Early Learning Center Yoga 9:30 a.m.	<b>21</b> Early Learning Center <i>erev Shabbat Service</i> with Susan Levy 10:00 a.m.  <i>erev Shabbat Service</i> 7:30 p.m.	<b>22</b> <b>Shabbat Service and Torah Dialogue</b> 10:00 a.m.
<b>23</b> Religious School CLOSED	<b>24</b> Early Learning Center Music 9:30 a.m.	<b>25</b> Early Learning Center CLOSED	<b>26</b> Religious School CLOSED	<b>27</b>	<b>28</b> Early Learning Center <i>erev Shabbat Service</i> with Rebecca Schwartz 10:00 a.m.  <i>erev Shabbat Service</i> 7:30 p.m.	<b>29</b> <b>Shabbat Service and Torah Dialogue</b> with Carol Nemeroff giving the <i>dvar Torah</i> 10:00 a.m.
<b>30</b> Religious School CLOSED	<b>31</b>					



# Kol Ami Contributions

---

We thank the following individuals for their generous donations to Kol Ami funds. To make a donation, send it to Congregation Kol Ami, 8201 High School Road, Elkins Park, PA 19027, and indicate to which fund it should be applied.



Thank you  
to all our  
past and  
present  
contributors!

## **ADULT EDUCATION FUND**

In Honor of:

**Rabbi Elliot Holin on the  
Yahrzeit of Lucille Barrett**  
*The Barrett Family*

## **DISCOVER ISRAEL FUND**

In Memory of:

**Reta Eisenberg**  
*Mark and Karin Kaplan*

## **RABBI'S DISCRETIONARY FUND**

*Ivan and Susan Popkin*  
*Steven Wit*

In Honor of:

**Gratitude to the outgoing and  
incoming Board of Trustees**  
*Shelley Chamberlain*

**Participating in the  
Yom Kippur service**  
*Ira Cooperman*

**Appreciation of Rabbi Berkowitz's  
smooth and meaningful assumption  
of the *bimah* these High Holy Days**  
*Joel Edelstein and Elizabeth McKinstry*

**Rabbi Berkowitz's first  
High Holy Days celebration  
with Congregation Kol Ami**  
*The Pratt/Hyman Family*

**Welcoming Rabbi Leah Berkowitz**  
*Ken Stanley and Sarah Barrett*

In Memory of:

**Morton H. Baker**  
*The Chamberlain Family*

**Reta Eisenberg**  
*David Hyman*

**Mary Gartenberg**  
*Gary and Cheryl Turetsky*

## **RELIGIOUS SCHOOL FUND**

In Honor of:

**Special anniversary of  
Rabbi Elliot and Susan Holin**  
*Gabriel and Orly Maravankin*

**Special birthday of  
William Hyman**  
*Janine Pratt, Maya, and Lia Hyman*

## **SYNAGOGUE FUND**

*Robert and Ellen Fischer*

In Honor of:

**Rabbi Leah Berkowitz**  
*Stanton and Merle Salkin*

**Shelley Chamberlain's gift of leader-  
ship to Congregation Kol Ami**  
*William Hyman and Janine Pratt*

**Special anniversary of  
Rabbi Elliot and Susan Holin**  
*Elaine Stevens*

**Special anniversary of Charles  
Langman and Laurie Jubelirer**  
**Langman**  
*Elaine Stevens*

**Rebecca Schwartz**  
*Stanton and Merle Salkin*

In Memory of:

**Reta Eisenberg**  
*Craig and Sharon Myers*  
*Elaine Stevens*

**Eleanor Fertik**  
*Ron Adelman*  
*Stanton and Merle Salkin*

**Sophie Shapiro**  
*Elaine Stevens*

**Frances Turetsky**  
*Alvin Turetsky*

**Minnie Turetsky**  
*Alvin Turetsky* ■