



WORSHIP SERVICES

MONDAY, Oct. 1, at 10:00 a.m.
Simchat Torah and Yizkor Service

FRIDAY, Oct. 5, at 7:30 p.m.
“First-Friday” *erev Shabbat* Service with blessings under the *tallit* for everyone celebrating a birthday or anniversary this month, along with the voices of our Adult Choir

SATURDAY, Oct. 6, at 10:00 a.m.
Shabbat Service and *Torah* Dialogue

FRIDAY, Oct. 12, at 7:30 p.m.
Coming-Out-Day Commemorative *erev Shabbat* Service

SATURDAY, Oct. 13, at 10:00 a.m.
Shabbat Service and *Torah* Dialogue

FRIDAY, Oct. 19, at 7:30 p.m.
Board Installation *erev Shabbat* Service

SATURDAY, Oct. 20, at 10:00 a.m.
Shabbat Service and *Torah* Dialogue

FRIDAY, Oct. 26
6:00 p.m. - Meet Rabbi Berkowitz at the “Fun-for-Kids” *erev Shabbat* Service
7:30 p.m. - *erev Shabbat* Service

SATURDAY, Oct. 27, at 10:00 a.m.
Shabbat Service and *Torah* Dialogue with Grades 7-12 (lunch to follow) ■

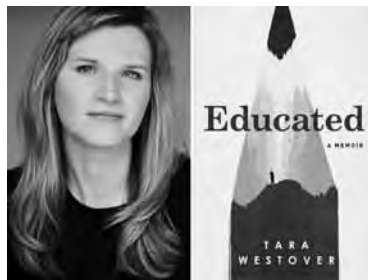
FROM THE RABBI'S BOOKSHELF

Rabbi Leah R. Berkowitz

IN PURSUIT OF HIGHER LEARNING

With our rabbinic transition (and my move) taking place over the summer, I didn't have much time for vacation, traveling only to visit our URJ summer camps and officiate at a wedding. But I reminded myself that what I like to do most on vacation is read. So I set up a cozy corner by the window of my new living room and began devouring as many books as I could.

I alternated—as I usually do—between novels, memoirs, poetry, leadership manifestos, and books on Jewish text, hoping to gather ideas for my High Holy Day sermons. My favorite two selections happened to be memoirs that I read at the beginning and end of my summer. As it turns out, these “bookends” both turned out to be about the pursuit of lifelong learning.



Tara Westover's *Educated* tells the story of a young woman growing up in a fundamentalist household without access to formal education. While Tara was technically “homeschooled,” she mostly helped her family salvage scrap metal and prepare home remedies for the end of days. Her desire to broaden her universe led her to Brigham Young University, and then on to Harvard and Cambridge, where she earned a PhD, in spite of having never set foot in a classroom before the age of 17.

The gaps in her knowledge were so great that she once asked her professor what a word meant and was accused of making a joke. The word was “Holocaust.” Looking the word up herself, Westover was overwhelmed by her own ignorance and became a lifelong student of history. Having suffered under controlling and abusive family members in her childhood, Westover's pursuit of knowledge and higher learning comes at a great cost.

continued page 3

SAVE THE DATE: THE WEEKEND OF NOVEMBER 9 - 11

Installation of Rabbi Leah Berkowitz - More information to follow!



CONDOLENCES

We extend our condolences in loving memory of:

Silvia Hellman

cousin of Vera Weissman and Sandie Weissman

May her memory forever be a blessing in the midst of our People. ■

COMMITTEE MEETINGS

Spiritual Exploration Group and potluck lunch with Rabbi Berkowitz
Sunday, October 14, at 12:30 p.m.

Chairs: Janet Falon, 215-635-1698, and Meryle Gurmankin, 215-464-2466

Worship Enhancement Committee

Sunday, October 28, at 9:30 a.m.

Chairs: Mindy Levy, 215-885-3672, and William Shapiro, 215-517-8666 ■



DRIVERS AVAILABLE

Need a ride to *shul*
that's more reliable than a mule?
Our dogsled team is here for you.
Call us, so you won't be blue!

Caring Congregant Co-chairs:

Linda George, 215-782-1413 or
LindaSGeorge@gmail.com, and
Elaine Gershenson, 215-887-3994
or gershlaw@comcast.net ■

FROM THE INTERIM DIRECTOR OF EDUCATION

A BUSY MONTH IN OUR HEBREW SCHOOL

The first month of school was awesome! Opening days are often stressful at secular schools, but religious school systems must work even harder to make that first step welcoming, memorable, and easy for every congregant.

Our faculty, leadership, Religious School committee, and professionals work together to make that first “step across the threshold moment” seamless, including appropriate and engaging decorations in the halls and classrooms and discussions about inclusion and diversity. The Kol Ami community is committed to these ideas. If you need something or have a special concern, or if that invisible emotional seam is ripping, please let us know.

We want our students to be engaged and involved in Jewish learning, and this year, we will ask them to write down what keeps them actively Jewish. This shows our students – and their parents – that our Reform Judaism curriculum isn't just about teaching from a book. It is about walking through our school to look for Jewish symbols, or to unroll the *Torah*. It is about finding the Rabbi and asking critical questions. It is about seeing how our high-school *madrichim* (student assistants) are demonstrating leadership and commitment to their Jewish lives.

Each school day when our teachers cross the threshold into Kol Ami, they recognize there are many factors, cultures, and feeder schools that merge in their classroom. May we all work together at school and at home so the values we teach our children have lasting impact.

In October, we will direct the energy and excitement of the holidays to October for a month of study and fun. Here's what's going on:

- **TUESDAY, OCTOBER 9**, is the first Tuesday evening class for LAMED at Gratz for Grades 11 and 12. The program begins at 7:00 p.m.
- **SUNDAY, OCTOBER 14** - Grades 5 and 6 travel to the Abramson Center in the morning to participate in enriching multi-generational activities.

Our new students are consecrated today, which means they are welcomed into our community with music and a blessing from the rabbi. Families are invited to take photos and *kvell*. We welcome all of our newest students during religious school at 11:15 a.m.

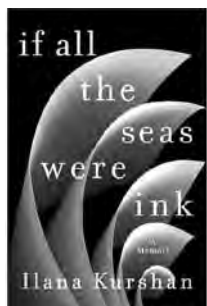
At 12:30 p.m., Grades 3 and up stay after school for the first events of the Temple Youth Groups, led by Roz Holtzman and Tara Cherwony. This month, families will receive a joint youth group calendar of events. The kick-off event is a surprise, but it involves lunch, popcorn, and fun!

- **SUNDAY, OCTOBER 28**, is *Yom Limmud*, a day of learning. While Rabbi Berkowitz and some of the faculty will be at a conference, the LAMED students, remaining faculty, and I have some great plans for the day.

Susan Levey
215-635-7106 ■

FROM THE RABBI'S BOOKSHELF

(continued from page 1)



At the end of the summer, PJ Library (a non-profit that distributes free Jewish books to children 6 months to 12 years: pjlibrary.org) sent me a copy of Ilana Kurshan's If All the Seas Were Ink. This memoir documents Kurshan's journey through the daily Talmud study program known as *daf yomi*, or "daily page," in which stu-

dents all around the world follow the same daily schedule of study in order to read all 63 tractates of the Talmud in seven-and-a-half years (I attempted this once and only lasted a few months). Her passion for learning—both Talmud and English Literature—was so great that she invented many ways for herself to multitask: reading while walking, listening to podcasts while jogging, and even laminating pages so she could study between laps in the pool! Kurshan chronicles how her life intersects with the subject material over this period of time: healing from divorce, building a new life for herself, finding love again, and starting a family.

I share these two titles with you not only because you might enjoy reading them, but because they have so much to tell us about the importance of lifelong learning. For Westover, learning history became the key to escaping the narrow mind-set in which she had been raised. For Kurshan, daily Talmud study provided rhythm and purpose to her life when she might otherwise have felt completely adrift.

And learning together can do the same for us!

It is my hope that the learning we engage in at Kol Ami will open our minds and expand our horizons, and that many of us will choose to make lifelong learning a part of the rhythm of our lives.

We have two courses starting in October: My course is called "Beginnings: A Deep Dive into the Book of Genesis," (Thursdays at 7:00 p.m. on October 11, 18, and 25). We also have the opportunity to learn with Ira Cooperman in his course "Defending America: The U.S. Security Strategy" (Mondays at 7:00 p.m. from October 29 through November 19).

If you are interested in shaping the course of lifelong learning at Kol Ami, please join me on Wednesday, October 17, at 7:30 p.m. for a discussion on lifelong learning and what we might wish to learn about in the year(s) to come.

"From the Rabbi's Bookshelf" is one format I like to use for my Bulletin articles. Another is "Ask the Rabbi." If you have a book suggestion or a burning question about Jewish life, history, or text, please submit them to rabbi@kolamielkinspark.org. ■

SYNAGOGUE LEADERSHIP

Main Office

215-635-3110

Rabbi Leah R. Berkowitz

215-635-4182

Rabbi Elliot Holin, Founding Rabbi

215-882-0017

Ruben Honik, President

215-327-9166

Barbara Fink, Vice President

215-886-2297

Jeffrey Margasak, Vice President

215-635-9332

Lorie B. Slass, Secretary

215-635-0920

Lisa Landau, Treasurer

215-635-9996

PROFESSIONAL STAFF

**IN RESPECT OF SHABBAT, THE OFFICE
CLOSES AT 3:00 P.M. ON FRIDAYS.**

Elaine Stevens, Executive Director

215-635-3110

Susan Levey

Interim Director of Education

215-635-7106

Sheri Cutler

Early Learning Center Director

215-635-4180

Rebecca Schwartz, Cantorial Soloist

215-572-6094

Please send correspondence to:

Congregation Kol Ami

8201 High School Road

Elkins Park, PA 19027

Website: www.kolamielkinspark.org

Facebook: <https://www.facebook.com/kolamielkinspark>

BULLETIN SUBMISSIONS

Please send articles by the fifth of the previous month to **Janet Falon** at jfalon@english.upenn.edu. Articles may be edited as needed. ■



UNION FOR
REFORM JUDAISM

האיחוד ליהדות רפורמית
SERVING REFORM CONGREGATIONS IN NORTH AMERICA

2018-2019

Study at the *Shul* for Adults

RSVP TO ELAINE STEVENS AT 215-635-3110 UNLESS OTHERWISE NOTED.
THERE IS A \$50 FEE FOR NON-MEMBERS TO ATTEND ANY OF THESE COURSES.

Beginnings: A Deep Dive into the Book of Genesis

Three Thursdays at 7:00 p.m.

October 11, 18 & 25

Instructor: Rabbi Leah Berkowitz



Even within the first *Torah* portion of Genesis, we encounter some of the most complex stories of human (and divine) behavior in our people's narrative. Dive deep into these rich passages as we discuss these enduring questions: Are there two creation stories – and why? Who is at fault for our expulsion from Eden? What led to the first murder – and the first cover-up?

- **OCTOBER 11** - Creation Story(ies): Where do we humans fit into the divine plan?
- **OCTOBER 18** - Expulsion from Eden: Fall from Grace or Necessary Step Forward?
- **OCTOBER 25** - Cain and Abel: The Ellipsis Heard Round the World

RSVP by October 8.

(Rabbi Berkowitz will also offer a Winter/Spring course and is hoping to learn more from YOU about what you'd like to learn before finalizing the dates/times/topics. Be in touch at rabbi@kolamielkinspark.org to share your ideas.)



Defending America: The United States Security Strategy

Four Mondays at 7:00 p.m.

October 29 and November 5, 12 & 19

Instructor: Ira Cooperman

The four pillars or themes of the current Administration's security and defense strategy are:

- Protect the homeland,
- Promote America's prosperity,
- Preserve peace through strength, and
- Advance America's influence in the world.

This class will examine these themes and compare them with the strategies of the former occupants of the White House. Do they make sense to you? Do you agree with these goals? Come join our discussion of our national-security strategies as we consider what should be our nation's security goals.

RSVP by October 24.

Ira Cooperman lectures for retired adults on national security topics at Reform Congregation Keneseth Israel, Abington Public Library, and the Center for Life Enrichment in Highlands, NC. As a former Air Force intelligence officer, Cooperman has worked with the CIA and the NSA and has been invited to give talks at the United States Military Academy at West Point and at the State University of New York. He has been a reporter for The Los Angeles Times and have been published as well in The New York Times and other publications. He is a graduate of San Francisco State University and has done graduate work at Harvard. ■



Hazon Seal of Sustainability

HUNGRY FOR CHANGE: A SUMMIT ABOUT AMERICAN AND ISRAELI STRATEGIES FOR FOOD SECURITY, RECOVERY AND JUSTICE

**Sunday, November 11, from 11:00 a.m. to 6:00 p.m.
at 2100 Arch Street, Philadelphia**

In celebration of Israel's 70th anniversary, *Hazon* Philadelphia and the Jewish Federation of Greater Philadelphia invite you to their one-day international food summit. Hear from food security pioneers working tirelessly to ensure all residents in Greater Philadelphia and Israel have access to nutritious food. Tour one of Philadelphia's leading food access organizations, including The Common Market, The Deaver Wellness Farm at Lankenau Medical Center, KleinLife Edible Campus, and the *Mitzvah* Food Project. In small workshops, learn about innovative strategies for food rescue, recovery, and justice and for integrating sustainable practices into your daily life. Visit the marketplace filled with a variety of local vendors offering sustainable goods and services.

KEYNOTE SPEAKERS

- Joel Berg, CEO of Hunger Free America
- Gidi Kroch, CEO of Leket Israel
- Yuvi Tashome-Katz, Co-founder of "Friends by Nature"
- Eran Weintrob, Executive Director of *Latet* - Israeli Humanitarian Aid

OPTIONAL MORNING TOURS from 9:00 a.m. to 10:15 a.m.

Choose one of the following optional morning tours to see Philadelphia's urban farming initiatives that serve seniors, hospital patients, and vulnerable populations. Attendees will need to provide their own transportation to and from the tours.

- The Common Market
- The Deaver Wellness Farm at Lankenau Medical Center
- KleinLife Edible Campus
- *Mitzvah* Food Program
- Jewish Relief Agency

ADDITIONAL TOPICS

- Public Policy Advocacy
- Urban Farming
- Food Rescue
- Addressing Climate Change
- Leveraging Technology
- Partnerships with Insurers and Healthcare
- Philanthropy

REGISTER NOW

The cost of registration includes a kosher-catered lunch. This program will comply with the *Hazon* Seal of Sustainability. A portion of your registration fee will be directed to food security programs in Greater Philadelphia and Israel. ■



WELCOME NEW MEMBER BONNIE SCHEER

Kol Ami warmly welcomes new member Bonnie Scheer, who just joined our congregation following her recent move to Philadelphia from Poughkeepsie, NY, so she could be closer to her daughter, Sara Lazrow and Sara's family.

Bonnie is a clinical social worker who worked more than 30 years in a community mental-health center in Dutchess County, in upstate New York. Bonnie also had a private practice in family therapy.

Bonnie says that she is thrilled to be able to attend services led by Rabbi Berkowitz, as Bonnie was a member of Rabbi Berkowitz's previous congregation, and she always enjoyed the rabbi's great intellect, sense of humor, and beautiful voice, among other positive attributes.

Bonnie lives in the Art Museum area. As someone who has devoted her career to helping communities and families, Bonnie says she is looking forward to helping change Pennsylvania "from purple to blue." Bonnie adds that she also looks forward to meeting the people in her new congregation, and we would like to reciprocate the sentiment. Kol Ami whole-heartedly welcomes you, Bonnie! ■

Kol Ami Events

UPCOMING 2018-2019 EVENTS FOR LADIES OF A CERTAIN AGE (LOCAs)

Dinner, chocolate tasting, fashion, and more! Here's what's on the schedule this year, so save the dates:

- **FRIDAY, OCTOBER 5, at 5:30 p.m.:** *erev Shabbat* dinner at Marco Polo followed by services. RSVP to Joan Greenberg (jgreenbe53@gmail.com or 215-530-1166).
- **SUNDAY, OCTOBER 21, at 2:00 p.m.:** Chocolate-tasting party at the home of Natalie Dyen. Bring samples of your favorite chocolate to savor and share. Look for further details via listserv and e-mail.
- **FRIDAY, DECEMBER 14, at 5:30 p.m.:** *erev Shabbat* dinner at either Marco Polo or Szechuan Mandarin, followed by services.
- **FRIDAY, FEBRUARY 1, at 5:30 p.m.:** *erev Shabbat* dinner at either Marco Polo or Szechuan Mandarin, followed by services.
- **FEBRUARY date TBD:** Trip to the Philadelphia Art Museum to see the "Fabulous Fashion: From Dior's New Look to Now" exhibit. Details TBA.
- **FRIDAY, APRIL 5, at 5:30 p.m.:** *erev Shabbat* dinner at either Marco Polo or Szechuan Mandarin, followed by services.
- **SUNDAY, APRIL 28, at 2:00 p.m.:** Tea party at the home of Jane Finkle. Fine tea, delicious goodies, and excellent conversation. Details TBA.
- **FRIDAY, MAY 3, at 5:30 p.m.:** *erev Shabbat* dinner at either Marco Polo or Szechuan Mandarin, followed by services.

Hope you can join us for some of these events.

UPCOMING RED CROSS BLOOD DRIVE: OCTOBER 29 FROM 2:00 TO 7:00 P.M.



Why don't you consider donating blood this year at our annual Red Cross Drive?

You may wonder if you are eligible to give blood or not. Here are some eligibility requirements to consider:

YES, YOU CAN GIVE BLOOD IF:

- You have high blood pressure if your condition is under control through medication.
- You have diabetes if it is well controlled on insulin or oral medications.
- You have a pacemaker. Check with your doctor.
- You have had cancer and are one year out from treatment. (Leukemia, lymphoma, or blood cancers are a no.)
- You are 17 years old ... **AND YOU ARE NEVER TOO OLD TO GIVE BLOOD.**
- You have a tattoo for at least 12 months.
- You have not donated for 56 days (for us, that means after September 5).
- You weigh more than 110 pounds.

NO, YOU MAY NOT DONATE IF:

- You have visited a malaria country within 12 months.
- You are pregnant (although you can donate six weeks after delivery).
- You have been diagnosed with HIV/AIDS.
- You are a male who has had sex with another male. [We at Kol Ami recognize that this restriction is not in line with our community's values. We hope that someday this rule will be changed to reflect modern medical knowledge, but in the meantime, we wanted you to know about this restriction so that you would not be turned away at the blood drive itself.] Lesbian women can donate.

If you read this list and would like more clarification on whether you can give or not, check the redcrossblood.org website for further information.

Thanks for rethinking!

See the flyer on the next page for further details on the blood drive at Congregation Kol Ami.

SAVE THE DATE

"In-house Concert" featuring the Avanti String Quartet
Sunday, November 4, at 5:00 p.m. ■



**American
Red Cross**

Communities Coming Together

**American Red Cross
Blood Drive
Congregation Kol Ami**

**Sanctuary
8201 High School Road
Elkins Park, PA 19027**

**Monday, October 29, 2018
2:00 PM - 7:00 PM**

Appointments are Preferred.
For an appointment, please contact:
Jean Ettinger at jeanettinger@gmail.com.
To sign-up online, please visit www.redcrossblood.org
and enter sponsor code: Kol Ami Elkins Park

Dial 1-800-RED CROSS
for any additional information

Download the Blood Donor App | redcrossblood.org | 1-800-RED CROSS | 1-800-733-2767

© 2017 The American Red Cross | 147672



A Hazon Seal of Sustainability Initiative
presented by the *Shomrei*
Adamah Environmental
Stewardship Committee
at Congregation Kol Ami

Introduction to Backyard Beekeeping Tuesdays (3 Sessions)

October 30, November 6 & 13

from 7:00 to 9:00 p.m.

Instructor: Jane Tausig

Backyard beekeeping is fascinating, fun, and good for the environment. These "To Bee or Not To Bee": Honeybees and the Environment Initiative classes will explore the life cycle of a honeybee, life inside the hive, tasks required of a backyard beekeeper, and threats to honeybees' health and well-being using a combination of media, discussion, and "show-and-tell" activities. Learn how to set up your own backyard beehive! Timing of the class allows for ordering bees in time for spring 2019. Class size is limited to 15 people, on a first-come, first-served basis.

Contact Jane at jetausig@gmail.com with questions and/or to sign up. Registration closes on October 5, 2018.

From home...



To...



ARTIST OF THE MONTH

JAMIE HANKIN: OCTOBER 16 - DECEMBER 3



Jamie Hankin received a BFA in photography from Pratt Institute in Brooklyn, NY, in 1982 and received an MFA in photography from the Savannah College of Art and Design in August 2016. A successful, long-time commercial photographer, Mr. Hankin was most recently Director of Studio Photography for Saks Fifth Avenue. Previously, he has worked for global clients such as J. Crew, Nike, Foot Locker, L.L.Bean, and Macy's. He has also worked for editorial clients such as *Vogue* and *Interview* magazine. Mr. Hankin's photography is included in worldwide collections and has been shown internationally. His previous work was selected to be shown at Currents, at the Ogden Museum of Southern Art in New Orleans, which opened in December 2016. He has previously shown at the Oglethorpe Gallery in Savannah, GA, and the Carrie Haddad Gallery in Hudson, NY.

Current projects also include "Winter's Approach," an essay on memory and the passage of time at a single location, shown at the Art School of Columbia County in July 2018 and "Faces at the Fair," an ongoing labor of love, depicting the myriad residents and visitors to the Columbia County Fair, held annually for the past 178 years in Chatham, NY. A Kickstarter campaign is in process in order to publish this multi-year group of photographs in book form, with all of the proceeds being returned to the community in the form of charitable donations to promote healthy kids, preserve local agriculture, and assist our military veterans.

<https://www.kickstarter.com/projects/275167363/faces-at-the-fair-0>

Please join us at Mr. Hankin's open house on Sunday, October 28, at 1:00 p.m. ■

The Kol Ami gallery hours are Wednesday from 4:00-8:00 p.m. and Sunday from 10:00 a.m.-noon. If the Religious School is closed on those days, the gallery is also closed. A percentage of all displayed purchased works will be donated to Kol Ami.

AN EASY WAY FOR YOU TO SUPPORT THE KOL AMI EARLY LEARNING CENTER



Federation Early Learning Services has been successful over the past several years raising additional dollars through the United Way's Donor Option Program.

Involvement in FELS' United Way campaign is an ideal way for you to show your support of Kol Ami without undermining Kol Ami's fund-raising campaigns because United Way does not allow synagogues to participate in the Donor Option program.

Many of you are already contributing to the United Way individually or through your workplace campaign. FELS would like to continue its donor option outreach to the congregation. Please consider designating **FEDERATION EARLY LEARNING SERVICES** as your United Way donor option choice.

FELS' donor option number is:
#44

Your tax-deductible contribution, in any amount, helps all of our children. ■

Activities galore for the little ones...

Early Learning Center



KOL AMI OCTOBER 2018 AT A GLANCE

Sunday	Monday	Tuesday	Wednesday	Thursday	Friday	Saturday
	1 Simchat Torah and Yizkor Service 10:00 a.m.	2 Early Learning Center CLOSED	3 Religious School 4:00 p.m. and 6:00 p.m.	4 Early Learning Center Yoga 9:30 a.m.	5 Early Learning Center erev Shabbat service with Rebecca Schwartz 10:00 a.m. LOCA Dinner at Marco Polo 5:30 p.m. "First-Friday" erev Shabbat Service 7:30 p.m.	6 Shabbat Service and Torah Dialogue 10:00 a.m.
7 Religious School 10:00 a.m. - Noon 12:00 p.m. - Student Choir Rehearsal Adult Choir Rehearsal 10:25 a.m.	8 Early Learning Center Music 9:30 a.m.	9 Early Learning Center Fitness 9:30 a.m.	10 Religious School 4:00 p.m. and 6:00 p.m.	11 "Study at the Shul" for Adults with Rabbi Berkowitz 7:00 p.m.	12 Early Learning Center erev Shabbat service with Rabbi Berkowitz 10:00 a.m. Coming-Out-Day Commemorative erev Shabbat Service 7:30 p.m.	13 Shabbat Service and Torah Dialogue 10:00 a.m.
14 Religious School 10:00 a.m. - Noon 10:00 a.m. - Gr 5-6 to Abramson Center 11:15 a.m. - School-wide Consecration Service 12:00 p.m. - Student Choir Adult Choir Rehearsal 10:25 a.m. Junior and Senior Youth Group Movie and Lunch 12:30 p.m. Spiritual Exploration Group Meeting and Potluck Lunch 12:30 p.m.	15	16 Early Learning Center Fitness 9:30 a.m. Early Learning Center Parent Night 6:30 p.m.	17 Religious School 4:00 p.m. and 6:00 p.m. Lifelong Learning Meeting with Rabbi Berkowitz 7:30 p.m.	18 Early Learning Center Yoga 9:30 a.m. "Study at the Shul" for Adults with Rabbi Berkowitz 7:00 p.m.	19 Early Learning Center erev Shabbat Service with Rebecca Schwartz 10:00 a.m. Board Installation erev Shabbat Service 7:30 p.m.	20 Shabbat Service and Torah Dialogue 10:00 a.m.
21 Religious School 10:00 a.m. - Noon 12:00 p.m. - Student Choir Adult Choir Rehearsal 10:25 a.m. LOCA Chocolate-Tasting Party - 2:00 p.m. Home of Jim and Natalie Dyen Cheltenham Touring Ensemble 2:00 p.m.	22 Early Learning Center Music 9:30 a.m.	23 Early Learning Center Fitness 9:30 a.m.	24 Religious School 4:00 p.m. and 6:00 p.m.	25 "Study at the Shul" for Adults with Rabbi Berkowitz 7:00 p.m.	26 Early Learning Center erev Shabbat Service with Susan Levy 10:00 a.m. Meet Rabbi Berkowitz at "Fun-for-Kids" erev Shabbat Service 6:00 p.m. erev Shabbat Service 7:30 p.m.	27 Shabbat Service and Torah Dialogue with Grades 7-12 10:00 a.m. (Lunch to follow)
28 Worship Enhancement Committee Meeting 9:30 a.m. Religious School 10:00 a.m. - Noon 12:00 p.m. - Student Choir Adult Choir Rehearsal 10:25 a.m. Artist Open House 1:00 p.m.	29 American Red Cross Blood Drive 2:00 - 7:00 p.m. "Study at the Shul" for Adults with Ira Cooperman 7:00 p.m.	30 Early Learning Center Fitness 9:30 a.m. Introduction to Backyard Beekeeping with Jane Tausig 7:00 p.m.	31 Early Learning Center Apple Press Program 9:30 a.m. Religious School 4:00 p.m. and 6:00 p.m.			

Kol Ami Contributions

We thank the following individuals for their generous donations to Kol Ami funds. To make a donation, send it to Congregation Kol Ami, 8201 High School Road, Elkins Park, PA 19027, and indicate to which fund it should be applied (see list at right).

ARTS & CULTURE FUND

In Memory of:

Marilyn Gallagher
Fran Surkin

DISCOVER ISRAEL FUND

Stewart and Sally Eisenberg

RABBI'S DISCRETIONARY FUND

In Honor of:

Rabbi Leah Berkowitz
David and Patricia Ann Long

Special anniversary of
Rabbi Elliot and Susan Holin
Erik and Jennifer Streitwieser

Bris of Benjamin Venancio
Sanchez, Jr.
John Spiegelman

SYNAGOGUE FUND

Barry and Michele Steinbrecher

In Memory of

Julian Goodstein
Elaine Alexander

Bernard Levin
Alvin Turetsky

Celia Turetsky
Alvin Turetsky ■

HOW YOUR CONTRIBUTIONS ARE APPLIED: Below is a list of the available Kol Ami funds.

ADULT EDUCATION FUND

Enables us to provide lifelong educational programming focused on Jewish history and contemporary issues.

ARTS & CULTURE FUND

Enables us to provide funding for cultural programs, including music and arts, the preservation and maintenance of artwork within the Synagogue, and the beautification of the meditation garden.

BAR/BAT MITZVAH & CONFIRMATION FUND

Enables us to provide appropriate gifts (books, *kiddush* cups, and *Shabbat* candlesticks) when our young adults celebrate their *Bar/Bat Mitzvahs* and Confirmations.

"DISCOVER ISRAEL" FUND

Enables us to provide scholarships to enable children of our members to participate in approved peer-group trips to Israel.

FAMILY CAMP WEEKEND FUND

Enables us to underwrite the cost of Family Camp Weekend programs and to welcome specialists on a "weekend away" to explore a Jewish theme with our rabbi.

HOLOCAUST EDUCATION FUND

Enables us to offer age-appropriate programs to our Religious School students. A variety of educational initiatives will be sponsored, including, but not limited, to speaker programs, intolerance awareness, and travel to memorial museums/sites—all with a focus on its current relevance.

LIBRARY FUND

Enables us to purchase educational material for our members.

ONEG SHABBAT FUND

Enables us to provide refreshments following *Shabbat* services.

RABBI'S DISCRETIONARY FUND

Enables Rabbi Holin to perform *mitzvot* for those in need, in the name of the Congregation.

RELIGIOUS SCHOOL FUND

Enables us to provide resources and programs for the benefit of our children in Religious School.

SYNAGOGUE FUND

Enables us to provide for the general well-being of the Congregation.

YOUTH FUND

Enables us to provide scholarships to enable children of our members to participate in Jewish enrichment experiences at camps, youth enclaves, and other programs. ■