



WORSHIP SERVICES

FRIDAY, November 4, at 7:30 p.m.

“First-Friday” *erev Shabbat* Service with Adult Choir and birthday and anniversary blessings under the *tallit* (see page 6)

SATURDAY, November 5

10:00 a.m. - *Bat Mitzvah* of Gia Schmidt (see page 7)

2:00 p.m. - Blessing of Pets on the Meadow (see page 6)

FRIDAY, November 11, at 7:30 p.m.

erev Shabbat Service

SATURDAY, November 12, at 10:00 a.m.

Bar Mitzvah of Austin Copeland (see page 7)

FRIDAY, November 18

6:00 p.m. - “Fun-for-Kids” *erev*

Shabbat Service appropriate for all ages! It’s a happy half hour with lots of music and our Student Choir!

7:30 p.m. - “*Shabbaton* Against Hunger” *erev Shabbat* Service

SATURDAY, November 19, at 10:00 a.m.

Shabbat Service and *Torah* Dialogue

FRIDAY, November 25, at 7:30 p.m.

erev Shabbat Service

SATURDAY, November 26, at 10:00 a.m.

Shabbat Service and *Torah* Dialogue; Carol Nemeroff will give the *dvar Torah*

FRIDAY, December 2, at 7:30 p.m.

We welcome back Cantor Leon Sher to join us at our *erev Shabbat* Service that will be led by the men of the

continued page 2

LIGHTING THE CANDLES AND SAYING THE BLESSINGS OVER THE HANUKKIAH

FIRST NIGHT OF HANUKKAH (SUNDAY, DECEMBER 25)

The *shamash*, or serving candle, is lit first and is used to light the other candles every evening. The *shamash* is noticeable because it is situated higher than, or in front of, the other candles. Each night of *Hanukkah*, the candles are placed in the *hanukkiah* from right to left (the same way in which Hebrew is read) but are lit from left to right.

ON THE FIRST NIGHT ONLY, the *Sheh'beh'chyanu* is recited or sung:

ברוך אתה יי אלהינו מלך העולם שהחנינו וקיימנו והגידנו לזמן הזה

Baruch Atah Adonai, Eloheinu Melech ha'olam

Sheh'beh'chyanu v'ki'y'manu v'hig'danu

laz'mahn hazeh

Blessed are You, O Lord our God, Ruler of the universe,
Who has given us life, sustained us, and brought us to this time.

ON EACH NIGHT, the following blessings are recited or sung:

ברוך אתה יי אלהינו מלך העולם אשר קדשנו במצותיו וצונו
להדליק נר של חנוכה

Baruch Atah Adonai, Eloheinu Melech ha'olam

asher kid'shanu b'mitzvotav v'tzi'vanu l'hadlik neur

shel Hanukkah

Blessed are You, O Lord our God, Ruler of the universe,
Who sanctifies us through *mitzvot* and commands us to kindle
the candles of *Hanukkah*.

ברוך אתה יי אלהינו מלך העולם שעשה נסים לאבותינו בימים ההם בזמן הזה

Baruch Atah Adonai, Eloheinu Melech ha'olam

Sheh'asah neisim l'avo'taynu ba'yameem ha'hame

bahz'mahn hazeh

Blessed are You, O Lord our God, Ruler of the universe,
Who performed miracles for our ancestors in those days,
as at this time. ■

Join us to light the *Hanukkiah* together as we celebrate the sixth night of *Hanukkah*. Bring your *Hanukkiah* and seven candles to our *erev Shabbat* Service on **Friday, December 30, at 7:30 p.m.** Together we will light our *Hanukkiah*s.

WORSHIP SERVICES

(continued from page 1)

Congregation on an evening that will also be enhanced by the voices of our Adult Choir (see page 9)

SATURDAY, December 3, at 10:00 a.m.

Shabbat Service and *Torah* Dialogue

SUNDAY, December 4, at 11:15 a.m.

Consecration Service

FRIDAY, December 9, at

6:00 p.m. - *erev Shabbat* Service

with Grades 2, 3 & 4 participation

7:30 p.m. - Book reviewer extraordinaire Beverly Rosen will speak about Michael Chabon's most recent novel, *Moonglow* (see page 9) on an evening of "Second-Friday" birthday and anniversary blessings under the *tallit*

SATURDAY, December 10, at 10:00 a.m.

Shabbat Service and *Torah* Dialogue

FRIDAY, December 16, at 7:00 p.m.

Hinei mah tov! New-Member *Shabbat!*

We rejoice with members who have joined us within the past year to be part of our "Intimate and Dynamic" Congregation; preceded with complimentary pizza dinner and refreshments at 6:30 p.m.

SATURDAY, December 17, at 10:00 a.m.

Shabbat Service and *Torah* Dialogue

FRIDAY, December 23, at 7:30 p.m.

erev Shabbat Service

SATURDAY, December 24, at 10:00 a.m.

Shabbat Service and *Torah* Dialogue;

Carol Nemeroff will give the

dvar Torah

FRIDAY, December 30, at 7:30 p.m.

The Sixth Night of *Hanukkah* - Bring your *hanukiah* for a communal lighting and blessing over the *Hanukkah* candles. We will have candles available for anyone who needs them for their *Hanukkahs*.

SATURDAY, December 31, at 10:00 a.m.

Shabbat Service and *Torah* Dialogue;

Nu? What do you hope this new year will bring? ■

PRESIDENT'S LETTER

During *Rosh Hashanah*, I spoke about our intimate and dynamic community that provides lifelong opportunities for Jewish living, learning, and celebration. As you read through this November-December bulletin, you will be reminded of the many fabulous programs that provide connection to our Jewish community as well as continued engagement with our Synagogue family—programs that deepen our knowledge of and enhance how we practice our faith.

Don't say we didn't tell you...there's so much happening inside our walls and beyond!

Two years ago, our Congregation convened an important conference for the Jewish community of Greater Philadelphia called "Kindness Counts—Welcome and Inclusion of LGBTQ Jews and Their Loves Ones into the *Mishkan*." The response was so positive that on November 13 from 1:00 to 5:30 p.m., we will take the next step: "Kindness Counts *Bet*—Moving Beyond the Gender Boxes: Embracing Transgender and Non-Binary Jews, Their Loved Ones and Allies in the *Mishkan*," an afternoon of learning and dialogue.

Long ago, the *Mishkan* gave people a sense of place on their journey through the wilderness. Too many transgender and non-binary Jews feel that they are still in the wilderness. The synagogue should be a sanctuary where all feel at home as well as a lifeline to healing and hope for some participants. Highly qualified, engaging speakers and workshop leaders will guide us to a better understanding and give us the insight and tools to create a truly inclusive environment. This day promises to be unforgettable and extremely informative in furthering our efforts of *Tikun Olam*.

Next month, on Sunday, December 11, the Fourth Annual *Hazon* Jewish Food Festival will be held at Congregation Rodeph Sholom in Center City. This year's theme, "Waste Not, Want Not: Exploring Our Food Choices," focuses on issues surrounding food waste and conservation. *Hazon* works to create healthier and more sustainable communities in the Jewish world and beyond. This year is no exception. If you are going for the second, third, or fourth time, *mazel tov!* If you have never attended, I highly recommend spending the afternoon learning and networking with foodie friends from the Pennsylvania and New Jersey region. The Jewish community is ever-evolving; be a part of celebrating the Philadelphia food and sustainability scene with tastes, demonstrations, and interactive experiences!

On Sunday, November 20, from 5:00 to 7:00 p.m., we invite you to our second "Congregants Connection" house concert in our lobby. Enjoy member-provided light hors d'oeuvres and home-baked desserts prior to listening to the vintage soul pop duo Genna & Jesse Dyen.

"Conversations" with Ira Cooperman and "Study at the *Shul*" with David Monblatt and Neal Beatus are adult learning opportunities that bring Judaism to life. Share these evenings of dialogue with fellow congregants. In addition to our robust course schedule, there is still time to sign up for the Adult

continued page 19

LOOKING FORWARD

by Janet Falon (September 2016)

I've always thought of *Yom Kippur* as an end,
The end of a year in which I, like all people strong enough to be honest,
made mistakes,
Some big, some not so, some so tiny that they can float away on a breath.

My own *Yom Kippur* prayers have always followed this structure:
I goofed,
I'm sorry,
I'll try to not do it again.

I've always rushed to repent before The Book of Life
— heavy and dusty —
slammed down hard on my fingers
while they were penciling in just one more promise to not-do,
just one more.

For me, *Yom Kippur* has been about the past,
Tying up loose ends that untied like kids' sneakers,
Mopping up after myself, after the drip-drip-drip of unintended tears,
And patching the plaster of crumbling foundations.

Sorry-and-never-again is very glass-half-empty,
And these days I'm teaching myself to divine for water and fill that glass.

So thanks to something I read from Rabbi Schneersohn,
The esteemed *Lubavitcher rebbe*,
I'm trying something new this year:
I'm looking forward more than back.

Instead of thinking, Last year I made a mistake
— maybe the mistake of being impatient —
This year I'll think, I'm going to be patient.

Instead of thinking, Last year I goofed
— let's say I judged people before knowing them well —
This year I'll think, I'm going to be slow to judge,
(if, in fact, I judge at all.)

So thank you, Rabbi Schneersohn, and thank you, mistakes.
Thank you, water
And thank you, glass.
This year, after the fast,
I will fill you. ■

TORAH & HAFTARAH

November 5 - *Noah*
Genesis 6:9-11:32, Isaiah 54:1-55:5

November 12 - *Lech Lecha*
Genesis 12:1-17:2, Isaiah 40:27-41:16

November 19 - *Vayera*
Genesis 18:1-22:24, II Kings 4:1-37

November 26 - *Chayah Sarah*
Genesis 23:1-25:18, I Kings 1:1-31

December 3 - *Toledot*
Genesis 25:19-28:9, Malachi 1:1-2:7

December 10 - *Vayetzai*
Genesis 28:10-32:3, Hosea 12:13-14:10

December 17 - *Vayishlach*
Genesis 32:4-36:43, Obadiah 1:1-21

December 24 - *Vayeshev*
Genesis 37:1-40:23, Amos 2:6-3:8

December 31 - *Miketz*
Genesis 41:1-44:17
Zechariah 2:14-4:7 ■

MAZAL TOV

Congratulations to **Mark Levin** and **Susan Strong** on the announcement of the engagement of their daughter, Jessica, to Tim Raimundo. ■

CONDOLENCES

We extend our condolences in loving memory:

Barbara Baxt
sister-in-law of Merle (Stanton) Salkin

Steven Cantor
cousin of Michael (Ellen) Matz

Doris Cramer
sister of Patty Ann (David) Long
aunt of Ben Long

Robert D. Fleck, Jr.
father of Paul (Amy) Fleck
grandfather of Erica and Matthew

May their memories forever be blessings in the midst of our People. ■

“Study at the *Shul*”for Adults

RSVP TO ELAINE STEVENS AT 215-635-3110 UNLESS OTHERWISE NOTED.
THERE IS A \$50 FEE FOR NON-MEMBERS TO ATTEND ANY OF THESE COURSES.

Adult Two-Year *Bnai Mitzvah* Course Continues

culminating in a meaningful service to celebrate this remarkable journey in Spring 2018

There is still time to join us two Tuesday evenings a month from 7:00 to 8:30 p.m.

RSVP directly to Rabbi Holin by December 1.

Judaism 101

Thursdays; November 10 & 17
from 7:30 to 9:00 p.m.

Instructor: David Monblatt

This is an introductory-level class for those people who never received a formal Jewish education or who just wish to refresh their knowledge about Judaism. Whether you never attended Hebrew school or it's been ages since you've learned about Judaism, or you're a parent who wishes to be more engaged in your child's Jewish education, Judaism 101 will review the basics, including the origin, history, traditions, texts, and holidays that comprise the Jewish faith.

RSVP by November 3.

The Sacrifice of Isaac: Destructiveness and Repair

Thursdays, December 8 & 15
from 7:30 to 9:00 p.m.

Instructor: Neal Beatus

The story about God commanding Abraham to sacrifice his son, Isaac, is one of the most disturbing myths in the Bible. It feels appalling that God would ask a parent to murder his child. It is also bizarre that Abraham does not question the command. Abraham brings Isaac to Mt. Moriah and is about to kill him when the Lord sends an angel to tell him to stop.

We will analyze this horrifying story, which seems almost like a bad dream, through the lens of psychoanalytic theory. Why would Abraham show such aggression to his own child whom he loves? Are the characters of “God” and “the Lord” separate, and what could they represent? How does Abraham overcome his destructiveness and what happens to his relationship with Isaac afterwards?

RSVP by December 3.

Jewish Mindfulness Meditation

Thursdays; February 2, 9 & 16
from 7:00 to 8:30 p.m. and an additional date will be chosen for a labyrinth walk

Instructor: Carol Nemeroff

Guest Instructor: Dr. Orly Maravankin

Participants will have the opportunity to explore and practice methods for “quieting” the body and mind using Jewish sources and adaptations of other traditions in a Jewish context. Each session will feature guided-meditation exercises, as well as silent-meditation practice. The final session to be held in the Spring will offer the participants the opportunity to experience guided-walking meditation on an outdoor labyrinth.

RSVP by January 25.

Exposing Covert Actions of the Central Intelligence Agency (CIA)

Mondays; February 6, 13, 20 & 27
from 7:30 to 9:00 p.m.

Instructor: Ira Cooperman

Join a former intelligence officer as we explore how and why United States presidents have used the CIA to effect regime change in Europe, Latin America, Asia, Africa, and the Middle East. We will examine the situations, policies, politics, and methods that made this Third Option between traditional diplomacy and full-scale military action so attractive over the years.

RSVP by January 25. ■

PSYCHOANALYSIS AND THE BOOK OF JOB

Here is a guest column by instructor Neal Beatus to give us a flavor of his insights about Jewish texts:

I love Bible stories, and I love psychoanalysis. Some people argue that these two things are incompatible. I disagree. Sigmund Freud once said, "Everywhere I go, I find a poet has been there before me." The Bible contains the same truths as psychoanalysis, only in a poetic, mythical form.

Nowhere is this more apparent than in the Book of Job. The character of Job goes through terrible crises — he loses his children and fortune and is afflicted with sickness. The story captures many aspects of the grieving process that have been mapped out extensively in psychology: Job experiences shock, confusion, despair, anger, sadness, and, ultimately, growth.

Most of the Book of Job is a series of poems. And the poetry is wonderful and passionate. Early on in his grieving, for instance, when Job desponds, he says, "Man born of woman:/ His days are few, his belly full of rage./ He blooms and withers like a blossom, flees, unlingering, like a shadow, wears out like a rotten thing, a cloth moth-eaten."

Job and his friends debate why terrible things have happened to him. His friends say that Job must have done something wrong, because God is always just. They believe that things for Job will get better if he makes amends. But Job insists that he is innocent. I wonder if this conversation can be seen as an internal dialogue within Job. Maybe a part of Job, represented by his friends, wants to believe that he has control over the uncontrollable. He imagines that if only he did something different, then all would be better. Like many of us, he does not want to feel his own powerlessness.

Job is not patient like he is often portrayed in popular culture. He does not quietly endure his suffering. He is furious with God and wants to put God on trial to answer why he suffers. The Lord finally does answer. He describes the many wonders of creation: how He created the world and some of the awe-inspiring animals that inhabit it. These actions are beyond Job's ability and comprehension. One author I read wonders if the purpose here is to imply that there are many things, like suffering too, that are beyond Job's comprehension.

After the Lord speaks, Job says, "I knew You, but only by rumor; my eye has beheld You today./ I retract. I even take comfort for dust and ashes." Is this surrender? Has Job just been defeated? I do not believe so. I believe he has reached true mourning and is growing. Job has confronted the Lord/the Universe/Truth and realizes something vital: he realizes that he is small and will not get an answer to his question. We are but "dust and ashes." "Dust" indicates we are not made of anything extraordinary, and "ashes" are associated with mourning. In psychoanalysis, there is a beautiful theory that we need to accept certain limits — one of them being that we are not all-powerful — and we need to mourn these limits. If we can mourn them, then we can live more fully. The Book of Job shows the main character doing just this.

After the confrontation with the Lord/Truth, Job is healed and begins a new life with new children. Maybe these changes are symbolic of the positive internal changes he has made by passionately expressing his emotions and by accepting reality.

One of the beautiful messages of the Book of Job and of psychoanalysis is that although we do not know why terrible things happen and we cannot magically eliminate the pain that comes with living, we do have our feelings, our truth, and our suffering that we can acknowledge, express, and share. ■

SYNAGOGUE LEADERSHIP

Main Office

215-635-3110

Rabbi Elliot J. Holin

215-635-4182

Shelley Chamberlain, President

215-635-1738

Jeffrey Margasak, Vice President

215-635-9332

Lorie Slass, Vice President

215-635-0920

Barbara Fink, Secretary

215-886-2297

Lisa Landau, Treasurer

215-635-9996

PROFESSIONAL STAFF

**IN RESPECT OF SHABBAT, THE OFFICE
CLOSES AT 3:00 P.M. ON FRIDAYS.**

Elaine Stevens, Executive Director

215-635-3110

David Monblatt

Director of Education

215-635-7106

Sheri Cutler

Early Learning Center Director

215-635-4180

Rebecca Schwartz, Cantorial Soloist

215-572-6094

Please send correspondence to:

Congregation Kol Ami
8201 High School Road
Elkins Park, PA 19027

Web site: www.kolamielkinspark.org

Facebook: <https://www.facebook.com/kolamielkinspark>

BULLETIN SUBMISSIONS

Please send articles by the fifth of the previous month (e.g., by December 5 for the January/February issue) to **Janet Falon** at jfalton@english.upenn.edu. Articles may be edited as needed. ■



**UNION FOR
REFORM JUDAISM**

האיחוד ליהדות רפורמית

SERVING REFORM CONGREGATIONS IN NORTH AMERICA

Kol Ami Events

NEED HELP GETTING OUT TO VOTE ON NOVEMBER 8?

If so, call our Caring Congregant Co-chairs (Linda George, 215-782-1413, or Elaine Gershenson, 215-887-3994) and they'll make sure you can get there.

NOVEMBER AND DECEMBER BIRTHDAY AND ANNIVERSARY BLESSINGS

erev Shabbat, Friday, November 4, at 7:30 p.m.
erev Shabbat, Friday, December 9, at 7:30 p.m.

If you or someone in your family is celebrating a birthday or anniversary in November or December, please join us at our special "First-Friday" service in November and our "Second-Friday" service in December. Rabbi Holin will bless everyone with these *simchas* under a *tallit*. Watch for your invitation for this special *Shabbat simcha*. Rabbi Holin will continue to send personal letters to everyone celebrating a significant birthday or anniversary ending with 0 or 5 (for example, 40, 45). If you have a special 0 or 5 birthday or anniversary, you will be invited to participate in any Friday service in "your" month by blessing the candles or *challah*, or reciting the *Kiddush*, or at any Saturday service that month by carrying or blessing the *Torah*.



BLESSING OF PETS

Saturday, November 5, at 2:00 p.m.

"All wildlife after their kind, all herd animals after their kind, all crawling things that crawl upon the earth after their kind, all fowl after their kind, all chirping things, all winged things, they came to Noah into the ark, male and female they came" (Genesis 7:14-15). What could be more appropriate on *Shabbat* Noah and the story of the ark than to gather with our pets to bless them? Join Rabbi Holin and Cantorial Soloist Rebecca Schwartz on the meadow as we sing and bless our pets at our annual Blessing of Pets!

"BASEBALL, AMERICA'S PASTIME & ITS HALL OF FAME" CONVERSATION AND DISCUSSION WITH IRA COOPERMAN

Sunday, November 6, at 10:00 a.m.

(Coffee/bagels from 10:00 a.m. to 10:20 a.m. with presentation to follow. Wear your favorite baseball team's jersey, T-shirt, or cap to this presentation!)

Relive your baseball memories and favorite moments from our national pastime! Celebrate the game and its history with fellow baseball fans! Learn about the National Baseball Hall of Fame and Museum in Cooperstown during a discussion led by a museum docent and Hall of Fame volunteer.

Ira Cooperman, a member of our Congregation, has been an active volunteer at the National Baseball Hall of Fame and Museum in Cooperstown, NY, for the past 10 years. A frequent speaker at the annual Cooperstown Symposium on Baseball and American Culture, last June he gave a presentation on "Violence, Race & Redemption — the Marichal-Roseboro Confrontation of 1965," the most violent incident in the history of the game.

SHARE FOOD PROGRAM

Sunday, November 6, from 1:00 to 3:00 p.m.
2901 W. Hunting Park Avenue, Philadelphia



Help Philadelphia families this Season by packing food boxes for those in need at the SHARE Food Program. SHARE provides food to over 20,000 low-income families each month. This is a great activity for the whole family, ages 8 and up.

Map: <http://sharefoodprogram.org/contact>

Directions to SHARE: Route 1 South to Fox Street exit. At top of the exit, turn left onto Fox Street. Follow Fox Street to Hunting Park Avenue (about three lights), then turn right. Take Hunting Park to 29th Street. Turn right into the SHARE parking lot.

RSVP to Jody Smith Long at 215-512-3636 or jodyl321@comcast.net

continued page 9

BAT MITZVAH OF GIA SCHMIDT

SATURDAY, NOVEMBER 5, AT 10:00 A.M.



Gia is in the seventh grade at Philadelphia Academy Charter School. Her favorite subject is Social Studies because she is interested in learning about the geography and cultures of different places. Outside of school, she plays basketball and enjoys drawing.

“I am proud to be Jewish because throughout history, Jews have been treated unfairly, but in the end, we have become a strong religion and People,” she says.

“My *Mitzvah* Project was The Baby Bureau, a non-profit dedicated to helping underserved mothers, identified by social workers, to receive “baby bundles” of new and gently used clothing – bibs, receiving blankets, onesies, sleepers – as well as baby books and toys for babies up to 12 months of age. I have always had a soft spot for people who are unfortunate. I just think we take so much for granted.

“A Jewish ritual that I enjoy is saying the *Sh'ma* with my Mom. It is not only important to me, but it also really speaks to me when it says that there is only one God.

“A transforming experience in my life when I was younger was going to work with my Mom in the city. I saw so many homeless and hungry people there, and it made me think of how much I have, and how little many have. I am very thankful for what I have, and I give to those who have nothing.

“I chose to read my verses from Genesis 8:11-22 because it is the story of Noah, and specifically about a new beginning for the world when the dove returned to the ark with an olive branch in its beak. The theme about new beginnings can apply to the lives of people who are going through a difficult time.”

We congratulate Gia’s mother, Kara, and her brother, Nicholas. ■



BAR MITZVAH OF AUSTIN COPELAND

SATURDAY, NOVEMBER 12, AT 10:00 A.M.



Austin is in the seventh grade at Abington Friends School where his favorite subject is Science. He enjoys playing basketball and soccer.

“I like being Jewish because I enjoy the holy days and meeting my family at special places to celebrate,” he says.

“My favorite holy day is Passover. I really get a great feeling when I am with my family. I enjoy wherever we go, as long as we are together. It truly makes me happy.

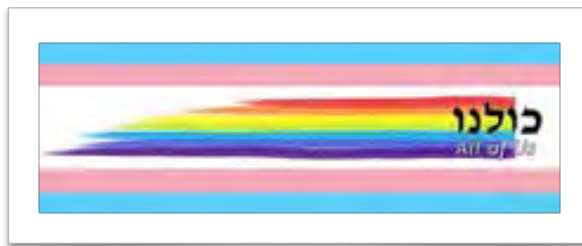
“A very powerful experience in my life occurred when I watched a movie about a woman who found Holocaust survivors in Europe who were in great need. She gave money to them to help them out, and they wrote letters back to her. The reason why I was so affected was because the letters were very moving and touching. So many suffered all of their lives, even as survivors.

“The reason I am celebrating my *Bar Mitzvah* is because there are some family members that I rarely see and I know that they wouldn’t miss it for a minute. I’m looking forward to seeing the entire family both near and far. I also know its significance to me and my family. While studying for my *Bar Mitzvah*, I learned that you have to give it your all to finish what you start. If you only do it half way, you will never know what you are fully capable of.

“For my *Mitzvah* Project, I collected shoes for children in Africa because when I was visiting Africa with my family last summer, we went to play soccer with kids my age. I noticed they didn’t have proper shoes. They were good players, but I imagined they would be better if they had proper shoes. I set out to make a difference by collecting shoes for them. Over 3,000 shoes were sent to the school in Tanzania that my grandparents, aunt, uncle, cousins, and immediate family visited. The kids I played soccer with, received shoes from the project I designed; Pay It Forward Sports.

“I chose to read verses from the beginning of the twelfth chapter of the Book of Genesis because they are interesting to me. The story is about Abraham’s journey away from his land, his home; a journey that all of us take: leaving home and creating a future for ourselves.”

We congratulate Austin’s parents, Brad and Julie Copeland, and his brother and sister, Logan and Addison. ■



Kindness Counts כ

Moving Beyond the Gender Boxes

*Embracing Transgender and Non-Binary Jews,
Their Loved Ones and Allies in the Mishkan*

Sunday, November 13, 2016

1:00pm to 5:30pm

Congregation Kol Ami
8201 High School Road
Elkins Park, PA
215-635-3110

Join us for a day of learning and dialogue.

Open to teens thirteen through esteemed elders and synagogue teams.

**Contact ExecDir@KolAmi.Info or call the number above
to get your Registration Materials today!**

Program opens with: Panelists sharing stories about their inclusion journey, followed by Q & A.

Workshop topics include:

- Trans/non-binary 101: Basics and more for allies and professionals alike
- **Teens only workshops:** Trans and Queer 101: Learning and Teaching & Community Organizing: Building Power for Change
- Religious Education: Making the classroom and curriculum safe, supportive and inclusive
- Trans/non-binary inclusive youth groups and overnight camping
- Betselem Elohim: We are all created in the image of God--Inclusion is a given...or is it?
- Repair the World (Tikun Olam) by becoming an inclusive synagogue community
- Do Now, Understand Later (Na'Aseh V'Nishma): Forming an action agenda on transgender issues to reorient your community
- Inclusive rituals and spiritual growth
- What should I say? Providing emotional support

ATTENTION CREATIVE KOL AMI MEMBERS!

Grab your paint brushes and canvases, your cameras, and printing supplies! The Arts & Design Committee is looking for Kol Ami artists to exhibit their framed, “ready-to-hang” artwork in Kol Ami’s Gallery.

We will be holding a Kol Ami Member Art show from January 6 to February 13, 2017. Find your favorite piece of artwork or two, drop it off at the office of Elaine Stevens by December 21, and the Arts & Design Committee will exhibit your work.

These pieces can range from your favorite travel photograph to one that you created in your studio. We encourage you to share your unique talents with us! Your work can be picked up after February 13.

Please contact Cheryl Turetsky by November 18 if you are interested (215-540-0467 or cheryljtg@gmail.com).

LEARN ABOUT AND LISTEN TO YIDDISH MUSIC IN NOVEMBER AND HEAR ABOUT A CONGREGANT’S NEW BOOK IN DECEMBER

On Monday, November 21, from 7:00 to 8:30 p.m., you’re welcome to attend a program about spirituality and how it is expressed in Yiddish music. Our speaker – and singer – will be Cantor Naomi Hersch. She is director of the Philadelphia Workman Circle Chorus of which our congregant Meryle Gurmankin is a member. This program is sponsored by the Spiritual Growth Group, and refreshments will be served. Donations are gladly welcome to help defray the cost of the program, but they are not required. All are welcome.

Additionally, congregant Bob Seltzer will be at the Spiritual Growth Group meeting on Monday, December 19, at 7:00 p.m., to speak about his new book, “*Techelet* – and Other Stories of Faith and Love.” All are welcome, and his books will be available for sale.

MALE-LED EREV SHABBAT SERVICE FEATURING CANTOR LEON SHER & OUR ADULT CHOIR

Friday, December 2, at 7:30 p.m.

Please join us for our *erev Shabbat* service led by the men of our Congregation and featuring artist-in-residence **Cantor Leon Sher**—a composer, conductor, guitarist, and pianist. Fathers and sons are encouraged to participate together.

BOOK REVIEWER EXTRAORDINAIRE BEVERLY ROSEN WILL SPEAK ABOUT MICHAEL CHABON’S MOST RECENT NOVEL, MOONGLOW

Friday, December 9, at the 7:30 p.m.

The critics have called *Moonglow*, by Michael Chabon, his most inventive work to date. The novel unfolds as a faux memoir of the novelist’s grandfather, whose life as an engineer, veteran, and felon offers an entree into themes of heroism and imagination. “Chabon’s theme is the storytelling (i.e. lies) people lean on to survive through complicated times.” The novel will be in bookstores on November 22.

2016 HAZON PHILLY JEWISH FOOD FESTIVAL

WASTE NOT, WANT NOT: EXPLORING OUR FOOD CHOICES

**Sunday, December 11, from 10:00 a.m. to 6:30 p.m.
at Congregation Rodeph Shalom, 615 North Broad Street, Philadelphia**

The Food Festival is welcoming and inclusive to people of all ages, levels of experience with food and cooking, and religious denominations and affiliations. This year’s event includes a flexible morning, featuring a Community Market and various learning and community-building opportunities. All parts of the day will connect to the concept of *Baal Tashbit*, or minimizing food waste. A Keynote Conversation will be held after lunchtime, kicking off an afternoon filled with 20 workshops options. The Festival will close with a lively klezmer dance party led by the West Philadelphia Orchestra. E-mail hazonphillyfoodfest@gmail.com for more information. Register and purchase tickets at bit.ly/HazonPhilly2016.

ISH HANUKKAH PARTY

**Saturday, December 17, at 7:30 p.m.
Location TBD**

MARTINI “ADULTS-ONLY” HAVDALAH SERVICE AND SPICES

Saturday, January 7, from 5:30 to 7:30 p.m.

We’ll supply the hors d’oeuvres and you supply the mixing devices, hard liquor, and mixers (beer, wine).

5:30 p.m. Martinis and hors d’oeuvres
6:15 p.m. Singing and *Havdalah* service
7:00 p.m. Group dinner (details below)

You are invited to join us for dinner after the *Havdalah* service at Park Plates in Elkins Park. To sign up for the dinner, please contact Mindy Levy at artb4words@verizon.net. Mindy will confirm receiving your reservation and will

continued page 12



COMMITTEE MEETINGS

Committee meetings are held at the Synagogue, unless otherwise noted.

Fund Development Committee

Monday, November 14, at 7:30 p.m.

Chairs: Jennifer Streitwieser, 215-421-8270, and Bart Weiner, 215-233-4712

Interfaith Relationship Dialogue

Tuesday, November 29, at 7:30 p.m.

at the home of Joel Edelstein and Betsy McKinstry
Chairs: Joel Edelstein and Betsy McKinstry, 215-782-1704

Programming Committee

Monday, November 7, at 7:30 p.m.

Chair: Shelley Chamberlain, 215-635-1738

Religious School Committee

Monday, December 12, at 7:30 p.m.

Chairs: Lisa Ney and Benjamin Shoham, 215-886-2029

Religious School PTO Committee

Sunday, November 20, at 11:00 a.m.

Chairs: Erica Douglas, 215-491-0630, and Deborah Poppel, 215-947-2252

Social Action Committee

Monday, December 5, at 7:30 p.m.

Chairs: Jody Smith Long, 215-512-3636, and Rocky Weinstock, 215-782-3848

Spiritual Growth Group

Monday, November 21 & December 19, at 7:00 p.m.

Chairs: Janet Falon, 215-635-1698, and Meryle Gurmankin, 215-464-2466 ■

"Fun-for-Kids" erev Shabbat Services

This 6:00 p.m. service is appropriate for all ages. It's a happy half-hour with lots of music and our terrific student choir.



- **Nov. 18**
- **Jan. 20**
- **Feb. 17**
- **Mar. 17**
- **Apr. 7**
- **May 5 ■**

BETTER WHEN I'M DANCIN'



Cheltenham High School
Touring Ensemble's
2016-17 show
at Congregation Kol Ami

Featuring dozens of
talented Cheltenham
High School singers
and dancers!

Sunday, December 4th, 2016
2:00 pm



Family Bingo Night

Come out and join us at Congregation Kol Ami
SATURDAY, NOVEMBER 19, 2016

5:00 p.m. — 7:00 p.m.

Kid-Friendly Prizes • "Themed" Raffle Items

Refreshments Available!

For more information, please call Ellen Kovnat

Phone: 215-886-8713

Congregation Kol Ami • 8201 High School Road • Elkins Park, PA 19027

Pre-order for big savings!

Name: _____

E-mail: _____

Street Address: _____

City, State, Zip: _____

Hm Phone/Wk phone: _____

4 packs _____ @ \$20.00 = \$ _____

single packs _____ @ \$5.00 = \$ _____

Payment Check # _____ (Payable to Kol Ami)

\$ _____



**4 pack – 14" cheese
pizza, 4 drinks, 4 cook-
ies, 10 bingo cards
.... \$20.00
(\$24.00 at the door)**

**Single pack – 2 pizza
slices, 1 drink, 1 cookie,
2 bingo cards \$5.00
(\$6.00 at the door)**

Deadline for pre-ordering is November 16, 2016. Please send form and check to:
8201 High School Road, Elkins Park, PA 19027

Open to the community

KOL AMI EVENTS (continued from page 9)

provide further details about the evening. This will be a wonderful way to extend the joy of the service by spending the evening together.

FASTS THIS MONTH AND NEXT

Join Rabbi Holin in fast days, no matter where you are, by sending funds that you would have spent on food to help men, women, and children in need. Forthcoming fast days on behalf of **NATAL** (Israel's Trauma Center for Victims of Terror and War) will be on "first Wednesdays," **November 2** and December 7. Forthcoming **Phast for Philadelphia** fast days on behalf of unemployed workers in Philadelphia who are struggling to make ends meet will be on "fourth Thursdays," **November 24** and December 22. Below are the addresses of these agencies:

American Friends of NATAL

1120 Avenue of the Americas, 4th Floor
New York, NY 10036

Unemployment Information Center

112 North Broad Street, 11 Floor
Philadelphia, PA 19102

(make check payable to Unemployment Information Center with a memo note "Philadelphia Unemployment Office").

SUCCESSFUL BLOOD DRIVE

We had a very successful Red Cross Blood Drive on Sept. 19, with 34 donors. Thanks for all the volunteer help and to all the donors. Save the date for next year, Nov. 6, 2017

SAVE-THE-DATE: DESIGNER BAG BINGO!

Saturday, March 4, 7:00 p.m.

Join us for a night of playing bingo to win designer handbags. Bring some friends and reserve a table! Designers include Coach, Kate Spade, and more! We'll also be giving away designer accessories as door prizes! BYOB and BYO-Snacks; some food and soft drinks will be available for purchase. The cost is \$36/person for 12 rounds of bingo. This event benefits Congregation Kol Ami.

SAVE-THE-DATE: NATIONAL LIBERTY MUSEUM

Sunday, March 19, at 2:00 p.m.

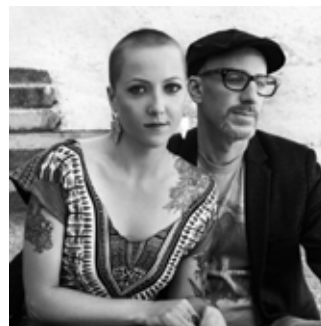
3rd and Chestnut Street, Philadelphia

A wonderful family outing (grandparents, moms and dads with their children) to gather and carpool to the museum for a docent-led tour and an opportunity to share ideas and wisdom with our children and elders with a discussion following the tour. Further details to follow! ■

Congregation Kol Ami "Our House" Concert

Featuring

Vintage Soul Pop Duo Genna & Jesse



**Sunday, November 20,
from 5:00 to 7:00 p.m.
at Congregation Kol Ami**

We invite you to a "Congregants Connection" house concert in our lobby. Enjoy light hors d'oeuvres, home-baked desserts, and your BYOBeverage from 5:00 - 5:45 p.m. with the back drop of beautiful art by Mick McAndrews

Concert begins at 5:45 p.m.

*Please join us! No charge but
RSVP is required to ensure
plenty of food for all.
Don't forget -- it's BYOB!*

*RSVP by November 14 to
Elaine Stevens, 215-635-3110
or execdir@kolami.info*

*Need a ride? Let Elaine know
and we'll arrange!*

**Back By
Popular
Demand!**



The Brew Crew

December 3, 2016

Join Kol Ami friends for our second

Private Tour of Yards Brewing Company

complete with a beer tasting of their house brews and a signature pint glass to take home.

We will start our night **PROMPTLY** at **5:30pm** with a guided tour of the microbrewery while enjoying a pint of their finest. At the end of the tour, we will be guided through an explanatory tasting of signature house brews by the experts who created them!

\$25/person

*****Space is limited – Send in your payment ASAP!*****

RSVP to Elaine Stevens at execdir@kolami.info

*Please make checks payable to Congregation Kol Ami no later than **November 18th**!*

DENIM & Diamonds AN ANNUAL FUNDRAISER BENEFITTING CONGREGATION KOL AMI

TENTH ANNIVERSARY EDITION!

THE DATE: Saturday, January 21, 2017 at Congregation Kol Ami
7:00 to 11:00 p.m.

ATTENDING: You and all of your Friends and Family

Your Support is Needed!!

Tickets:

Tickets are available for purchase at \$35/person in advance and \$45/person at the door.

New: online purchase available at our website: kolamicasinonight.org. All tickets include \$25 in gaming chips and as always there will be an open bar, complimentary light fare, and dessert.

Sponsorship: There are now 4 Opportunities of Support



Diamond Event Sponsor - \$1,000.00

Includes 8 tickets to the event with your name or business name on individual signage prominently displayed in the lobby in appreciation of your donation.



Club Beverage Sponsor - \$500.00

Includes 4 tickets to the event and signage at the bar in appreciation of your donation.



Spade Table Sponsor - \$300.00

Includes 2 tickets to the event and signage on a gaming table in appreciation of your donation.



Heart Casino Sponsor - \$136.00

Recognition signage including your name in appreciation of your donation.

Donations:

Another way to contribute to the event is by helping to obtain donations towards our variety of Gift Baskets and Silent Auction items. It can be as easy as contacting a vendor or service that you frequent. Some examples of past-donated items and services are Restaurant and Gift Cards, i.e., Amazon, American Express, Macy's etc., Florist Services, Spas, Nail and Hair Salons, Bakeries, Jewelry, tickets to Sporting Events and more.

The Casino Night committee is working hard to make this 10th Anniversary year our best fundraiser. Your support and donations are greatly appreciated.

Enclosed please find forms for Sponsorship, Basket/Silent Auction items and Event Tickets. Feel free to contact me with any questions.

Thank You.

Sharon Myers: Event Chair
215-460-0602, sharonmyers381@gmail.com

CONGREGATION KOL AMI 'CASINO NIGHT'
Saturday, January 21, 2017

Donation / Sponsorship Information Form

Business Name: _____

Contact Name: _____

Address: _____

City: _____ State: _____ Zip Code: _____

Phone # _____

E-mail: _____

Gift Item/Gift Card Donation

Description of Item: _____

Value of Item: _____

Website Information: _____

A business card may also be attached

Sponsorship Information:

Sponsorship Level: _____

Information for Signage: _____

Website Information: _____

A business card may also be attached

At this time, I am unable to contribute on any of the above, but please accept my donation in the amount of \$_____.

CONGREGATION KOL AMI • 8201 HIGH SCHOOL ROAD • ELKINS PARK, PA 19027

ARTIST OF THE MONTH
OCTOBER 21 - NOVEMBER 28
MICK McANDREWS



Mick's award-winning paintings strive to capture the mood and atmosphere of a subject, combining the magic of watercolor with reverence for the principles of design to create works of sophisticated simplicity.

Mick is a signature member of the Philadelphia Watercolor Society, the Pennsylvania Watercolor Society (Sylvan Grouse Guild), the Baltimore Watercolor Society, and he is an Artist Member of the Mid-Atlantic Plein Air Painters Association.

Mick has a Watercolor Demonstration feature article published in the June/July 2015 issue of Plein Air Magazine and his painting "Morning in Sitka" has been selected for publication in the 2016 edition of North Light Book's Splash 17: Inspiring Subjects!

Mick is a passionate painter who believes that time spent painting is precious. His goal is to draw and paint every day, and he believes that the fastest way to artistic growth is through the activity of painting. He especially enjoys painting outside to take advantage of surroundings, natural light, and the sights and sounds that influence each painter's creative nature. Mick also believes that "painting is great fun and when we're having fun it can be seen by the viewer in our finished work!" ■

The Kol Ami gallery hours are Wednesday from 4:00-8:00 p.m. and Sunday from 10:00 a.m.-noon. If the Religious School is closed on those days, the gallery is also closed. All of Mick's works are for sale. See Elaine Stevens if interested in purchasing a piece.

ARTIST OF THE MONTH
NOVEMBER 29 - JANUARY 3
SUSAN CANTOR-UCCELLETTI



Art has always been part of Susan's life. In addition to studying at The Cheltenham Center of the Arts on and off since 1984 with the guidance of Merle Spandorfer and recently with John Sevcik, Susan's only other formal art education has been her life. Having been diagnosed with lymphoma in 2009 and losing her granddaughter in 2010 have been major influences in bringing Susan's feelings onto the canvas. Meditation, yoga, and the colors of nature have helped bring the light into her art. Painting abstract-expressionism has opened up Susan and given her the freedom to express herself to the world in a beautiful form.

Painting abstract expressionism allows Susan to show the energy and feelings that flow out of her without thought. She uses acrylics, large brushes, palette knives, and vigorous strokes to accomplish movement and texture. Recently, she has been experimenting with different utensils, rollers, sponges, rulers, etc.; and she is having a lot of fun with them and loving the outcome as I'm sure you will too. Susan has participated in several juried shows locally and has work on exhibition at various sites. She's also a member of the Artists Cultural Exchange.

Susan states: "My paintings are my life on canvas. As I grow and evolve, I hope to be able to share my life experiences, good and bad, through my artwork." ■

The Kol Ami gallery hours are Wednesday from 4:00-8:00 p.m. and Sunday from 10:00 a.m.-noon. If the Religious School is closed on those days, the gallery is also closed. All of Susan's works are for sale. See Elaine Stevens if interested in purchasing a piece.

KOL AMI NOVEMBER 2015 AT A GLANCE

Sunday	Monday	Tuesday	Wednesday	Thursday	Friday	Saturday
		1 Early Learning Center Fitness 9:30 a.m. "Study at the Shul" for Adults with Barbara Rosenthal 7:30 p.m.	2 Religious School 4:00 p.m. and 6:00 p.m.	3 Early Learning Center Yoga 9:30 a.m.	4 Early Learning Center erev Shabbat Service with Rebecca Schwartz 11:00 a.m. "First-Friday" erev Shabbat Service with Adult Choir 7:30 p.m.	5 Bat Mitzvah of Gia Schmidt 10:00 a.m. Blessing of the Pets 2:00 p.m.
6 Religious School 10:00 a.m. to Noon Conversation and Discussion with Ira Cooperman 10:00 a.m. Adult Choir Rehearsal 10:25 a.m. Social Action SHARE Food Program 1:00 p.m.	7 Early Learning Center Music 9:30 a.m. Program Committee Meeting 7:30 p.m.	8 Early Learning Center Fitness 9:30 a.m. "Study at the Shul" for Adults with Barbara Rosenthal 7:30 p.m.	9 Religious School 4:00 p.m. and 6:00 p.m.	10 "Study at the Shul" for Adults with David Monblatt 7:30 p.m.	11 Early Learning Center erev Shabbat Service with Rabbi Holin 11:00 a.m. erev Shabbat Service 7:30 p.m.	12 Bar Mitzvah of Austin Copeland 10:00 a.m.
13 Trope Class 9:10 a.m. Religious School 10:00 a.m. - Noon Adult Choir Rehearsal 10:25 a.m. Kindness Counts Bet Conference 1:00 p.m.	14 Fund Development Committee Meeting 7:30 p.m.	15 Early Learning Center Fitness 9:30 a.m.	16 Religious School 4:00 p.m. and 6:00 p.m.	17 Early Learning Center Yoga 9:30 a.m. "Study at the Shul" for Adults with David Monblatt 7:30 p.m.	18 Early Learning Center erev Shabbat Service with Rebecca Schwartz 11:00 a.m. "Fun-for-Kids" erev Shabbat Service with Student Choir 6:00 p.m. "Shabbaton Against Hunger" erev Shabbat Service 7:30 p.m.	19 Shabbat Service and Torah Dialogue 10:00 a.m. Religious School PTO Family Bingo Night 5:00 p.m.
20 Trope Class 9:10 a.m. Religious School 10:00 a.m. - Noon 11:00 a.m. - Religious School PTO Committee 12:00 - Student Choir Rehearsal Adult Choir Rehearsal 10:25 a.m. "Our House" Concert with Genna and Jesse 5:00 p.m.	21 Early Learning Center Music 9:30 a.m. Spiritual Growth Group Meening with Cantor Naomi Hersch 7:00 p.m.	22 Early Learning Center Fitness 9:30 a.m.	23 Religious School CLOSED Thanksgiving	24 Early Learning Center CLOSED Thanksgiving	25 Early Learning Center CLOSED Thanksgiving erev Shabbat Service 7:30 p.m.	26 Shabbat Service and Torah Dialogue 10:00 a.m. Carol Nemeroff will give the <i>dvar Torah</i>
27 Religious School CLOSED Thanksgiving	28	29 Early Learning Center Fitness 9:30 a.m. Interfaith Relationship Dialogue 7:30 p.m. Home of Joel Edelstein and Betsy McKinstry	30 Religious School 4:00 p.m. and 6:00 p.m.			

KOL AMI DECEMBER 2015 AT A GLANCE

Sunday	Monday	Tuesday	Wednesday	Thursday	Friday	Saturday
				1 Early Learning Center Yoga 9:30 a.m.	2 Early Learning Center erev Shabbat Service with Rabbi Holin 11:00 a.m. Men-Led erev Shabbat Service with Cantor Leon Sher and Adult Choir 7:30 p.m.	3 Shabbat Service and Torah Dialogue 10:00 a.m. Yards Brewing Company Tour 5:30 p.m.
4 Trope Class 9:10 a.m. Religious School 10:00 a.m. - Noon 10:00 a.m. - K-1 Family Education Program 11:15 a.m. - Consecration Service 12:00 p.m. - Student Choir Rehearsal Cheltenham Touring Ensemble 2:00 p.m.	5 Early Learning Center Music 9:30 a.m. Social Action Committee Meeting 7:30 p.m.	6 Early Learning Center Fitness 9:30 a.m. B'nai Mitzvah Class 7:00 p.m.	7 Religious School 4:00 p.m. and 6:00 p.m.	8 "Study at the Shul" for Adults with Neal Beatus 7:30 p.m.	9 Early Learning Center erev Shabbat Service with Rebecca Schwartz 11:00 a.m. erev Shabbat Service with Grades 2, 3 & 4 participation 6:00 p.m. "Second-Friday" erev Shabbat Service with book reviewer Beverly Rosen 7:30 p.m.	10 Shabbat Service and Torah Dialogue 10:00 a.m.
11 Religious School 10:00 a.m. - Noon 10:00 a.m. - Gr 4 <i>Bar-Bat Mitzvah</i> Parent Meeting 11:00 a.m. - Gr 6 Parent and Student <i>Bar-Bat Mitzvah</i> Meeting HAZON Philly Jewish Food Festival 10:00 a.m. Rodeph Shalom	12 Religious School Committee Meeting 7:30 p.m.	13	14 Religious School 4:00 p.m. and 6:00 p.m.	15 Early Learning Center Yoga 9:30 a.m. "Study at the Shul" for Adults with Neal Beatus 7:30 p.m.	16 Early Learning Center erev Shabbat Service with Rabbi Holin 11:00 a.m. New-Member erev Shabbat Service 7:00 p.m. 6:30 p.m. - Pizza Dinner	17 Shabbat Service and Torah Dialogue 10:00 a.m. ISH Adult Hanukkah Party 7:30 p.m.
18 Religious School 10:00 a.m. - Noon 10:00 a.m. - American Dreidel Warrior Adult Choir Rehearsal 10:25 a.m. Kehillah Childrens Choir 1:00 p.m. Adath Jeshurun	19 Early Learning Center Music 9:30 a.m. Spiritual Growth Group Meeting with Bob Seltzer 7:00 p.m.	20 Early Learning Center Fitness 9:30 a.m. B'nai Mitzvah Class 7:00 p.m.	21 Religious School 4:00 p.m. and 6:00 p.m. 4:00 p.m. - Gr 2-7 Revolt of the Maccabees 6:00 p.m. - Gr 8-10 Family Hanukkah Party	22	23 Early Learning Center "Hanukkah Sing-along" erev Shabbat Service with Rebecca Schwartz 11:00 a.m. erev Shabbat Service 7:30 p.m.	24 Shabbat Service and Torah Dialogue 10:00 a.m. Carol Nemeroff will give the <i>dvar Torah</i>
25 Religious School CLOSED Winter Break First Night of Hanukkah	26 Early Learning Center CLOSED	27 Early Learning Center Fitness 9:30 a.m.	28 Religious School CLOSED Winter Break	29 Early Learning Center Yoga 9:30 a.m.	30 erev Shabbat Service 7:30 p.m.	31 Shabbat Service and Torah Dialogue 10:00 a.m.



*Thank you to all our past
and present contributors!*

Kol Ami Contributions

We thank the following individuals for their generous donations to Kol Ami funds. If you would like to make a donation, send it to Congregation Kol Ami, 8201 High School Road, Elkins Park, PA 19027, and indicate to which fund it should be applied.

ONEG SHABBAT FUND

In Honor of:

My special birthday

Carol Baron

**Special birthday of
Murray Greenfield**

Murray and Tracey Greenfield

**Bat Mitzvah of our grand-
daughter, Cecily Shandell**
Frederick and Sadie Shandell

RABBI'S DISCRETIONARY FUND

In Honor of:

Conversion of Jack Selkirk
David and Shelley Chamberlain

**The marriage of Amy Schiowitz
and Geoff Millner**
Robert Schiowitz and Ronit Sugar

In Memory of:

Morton H. Baker
David and Shelley Chamberlain

Barry Baron
Carol Baron

Dr. Nathan Blumberg
Carol Baron

RELIGIOUS SCHOOL FUND

In Honor of:

Terri Goldman
David and Shelley Chamberlain

Rosalind Holtzman
David and Shelley Chamberlain

SYNAGOGUE FUND

*Carol Baron
Michael Chernoff
Ellen Fischer
Adele Fricker
Stanton and Merle Salkin*

In Honor of:

Conversion of Jack Selkirk
Morgan, Jack, and Harper Selkirk

In Memory of:

Elaine Goldberg
Craig and Sharon Myers

Mary Meller
Craig and Sharon Myers ■

PRESIDENT'S LETTER

(continued from page 2)

Two-Year *B'Nai Mitzvah* Course. This course culminates in a meaningful service in May 2018 to celebrate a remarkable community-building journey.

And certainly, put our "First-Friday" *erev Shabbat* Services on your calendars. Rejoice with fellow members celebrating special birthdays and anniversary blessings. Our worship services are all meaningful, but these are enhanced by our adult choir. This is also a time to draw unaffiliated families into Kol Ami to experience the special Reform Judaism experience we have here.

As you read on, you will realize that I barely touched on the many opportunities to be together. I am so impressed with the labor of love to plan every program. *Kol hakavod!* Let's share these afternoons and evenings together. This is our community. Continue to learn, pray, and engage with us. May we strengthen ourselves and find strength in one another. Together, we are creating a more meaningful community, a rich Jewish path for ourselves and future generations.

Shelley Chamberlain
215-635-1738
srchamberlain@comcast.net ■





JANUARY

- **TUESDAY, JANUARY 3, at 7:30 p.m.**
Interfaith Relationship Dialogue Meeting
- **SATURDAY, JANUARY 7, at 5:30 p.m.**
Martini *Havdalab*, followed by dinner at Park Plates
- **SUNDAY, JANUARY 8, at 10:00 a.m.**
“Conversation and Discussion” with Bob Seltzer
- **SUNDAY, JANUARY 15, at 2:00 p.m.**
“Stop Hunger Now” Program
- **SATURDAY, JANUARY 21, at 7:00 p.m.**
Casino Night
- **SUNDAY, JANUARY 22, at 10:00 a.m.**
Religious School PTO Committee Meeting
- **MONDAY, JANUARY 23, at 7:00 p.m.**
Spiritual Growth Group Meeting
- **SUNDAY, JANUARY 29**
9:30 a.m. - Worship Enhancement Committee
4:00 p.m. - Adult Choral Concert at Beth Sholom
- **MONDAY, JANUARY 30, at 7:30 p.m.**
Religious School Committee

FEBRUARY

- **THURSDAYS, FEBRUARY 2, 9 & 16, at 7:00 p.m.**
“Study at the *Shul*” for Adults with Carol Nemeroff and Dr. Orly Maravankin
- **MONDAYS, FEBRUARY 6, 13, 20 & 27, at 7:30 p.m.**
“Study at the *Shul*” for Adults with Ira Cooperman
- **SATURDAY, FEBRUARY 11, at 6:00 p.m.**
Religious School PTO Movie Night
- **SUNDAY, FEBRUARY 12, at 5:30 p.m.**
Tu B'Shvat Seder
- **SATURDAY, FEBRUARY 25, at 7:30 p.m.**
ISH Painting Party
- **SUNDAY, FEBRUARY 26**
10:00 a.m. - Religious School PTO Committee Meeting
10:00 a.m. - Social Action “Cook for a Friend” ■

AN EASY WAY FOR YOU TO SUPPORT THE KOL AMI EARLY LEARNING CENTER

Federation Early Learning Services has been successful over the past several years raising additional dollars through the United Way's Donor Option Program.

Involvement in FELS' United Way campaign is an ideal way for you to show your support of Kol Ami without undermining Kol Ami's fund-raising campaigns because United Way does not allow synagogues to participate in the Donor Option program.

Many of you are already contributing to the United Way individually or through your workplace campaign. FELS would like to continue its donor option outreach to the Congregation.

PLEASE CONSIDER DESIGNATING
FEDERATION EARLY LEARNING SERVICES (FELS) - DONOR OPTION #44
AS YOUR UNITED WAY DONOR OPTION CHOICE.

Your tax-deductible contribution, in any amount, helps all of our children.