

March 2016

Adar 5776

קול עמי

AN INTIMATE
AND DYNAMIC
COMMUNITY



WORSHIP SERVICES

FRIDAY, March 4, at 7:30 p.m.

“Shabbat Across America” erev Shabbat
Service with our Adult Choir
(see page 6)

SATURDAY, March 5, at 10:00 a.m.

Shabbat Service and Torah Dialogue

SUNDAY, March 6, at 1:00 p.m.

Healing Service (see page 6)

FRIDAY, March 11, at 7:30 p.m.

“Second-Friday” erev Shabbat Service
with birthday and anniversary blessings under the *tallit* (see page 7)

SATURDAY, March 12

10:00 a.m. - *Shabbat Service and Torah Dialogue*

5:30 p.m. - *“Adults-Only” Martini Havdalah Service and Spices*
(see page 7)

FRIDAY, March 18, at 7:30 p.m.

erev Shabbat Service

SATURDAY, March 19, at 10:00 a.m.

Shabbat Service and Torah Dialogue

FRIDAY, March 25, at 7:30 p.m.

erev Shabbat Service

SATURDAY, March 26, at 10:00 a.m.

Shabbat Service and Torah Dialogue;
the *dvar Torah* will be given by Carol Nemeroff

FRIDAY, April 1, at 7:30 p.m.

“First-Friday” erev Shabbat Service
with birthday and anniversary blessings
and the voices of our Adult Choir

SATURDAY, April 2, at 10:00 a.m.

Shabbat Service and Torah Dialogue ■

FROM THE RABBI'S STUDY

Rabbi Elliot J. Holin

I recently had the pleasure of being a student in the course “Practicing Meditation: Experiencing the Peace of Stillness and De-stressifying” taught at our synagogue by one of our members, Orly Maravankin, Ph.D.

I don’t know what captured my attention first: the fact that Orly would be teaching the class, the phrase “the Peace of Stillness,” or the word “De-stressifying.” It was a wonderful few weeks learning more about meditation – I’ve been practicing it for almost 30 years – and techniques for moving into peaceful stillness.

One thing that I will always remember was Orly’s suggestion that we ponder the difference between the phrase “human being” and “human doing.”

Sometimes we are so busy “doing” that we don’t have the time to “be”: to be aware, to be responsive, to be open to the possibility of change and growth. We are often too busy “doing” because we are chained to our calendars and our mobile phones are short leashes. Burnout is the price paid on breathless sprints toward signs that read “success” and many a parent has told me of years lost to meetings and professional obligations in lieu of time spent with loved ones. One definition of being liberated is the ability to say “No” because that word frees us up to be with others and, yes, within ourselves. Human doing. Human being.

There is a commentary in the *Torah* that addresses the matter of “human being” versus “human doing.” God told Moses to ascend the Mount Sinai; and when he arrived at the summit, we read these words: “And he [Moses] was there.” The commentators write: “Well, of course he was there!” and they wonder why that phrase is there. What purpose does it serve?

The answer is that sometimes we arrive at our destination, or we achieve our goal, but as soon as we are there, we are not really there. We are already thinking “What’s next?” Moses, however, “was there.” He was totally in the moment. He wasn’t thinking about everything that led to that moment or what might follow it. He was focused on being there.

Human being.

Shalom u’vrachah,
Rabbi Elliot J. Holin ■

SYNAGOGUE LEADERSHIP

Main Office

215-635-3110

Rabbi Elliot J. Holin

215-635-4182

Shelley Chamberlain, President

215-635-1738

Ellen Asam, Vice President

215-635-5598

Julie Cohen, Vice President

215-635-4716

Jeffrey Margasak, Secretary

215-635-9332

Lisa Landau, Treasurer

215-635-9996

PROFESSIONAL STAFF

**IN RESPECT OF SHABBAT, THE OFFICE
CLOSES AT 3:00 P.M. ON FRIDAYS.**

Elaine Stevens, Executive Director

215-635-3110

David Monblatt

Director of Education

215-635-7106

Sheri Cutler

Early Learning Center Director

215-635-4180

Rebecca Schwartz, Cantorial Soloist

215-572-6094

Please send correspondence to:

Congregation Kol Ami
8201 High School Road
Elkins Park, PA 19027

Web site: www.kolamielkinspark.org

Facebook: <https://www.facebook.com/kolamielkinspark>

BULLETIN SUBMISSIONS

Please send articles by the fifth of the previous month (e.g., by March 5 for the April issue) to **Janet Falon** at jfaloon@english.upenn.edu. Articles may be edited as needed. ■



**UNION FOR
REFORM JUDAISM**

האיחוד ליהדות רפורמית
SERVING REFORM CONGREGATIONS IN NORTH AMERICA

PRESIDENT'S LETTER

Is it spring yet? We had one terrific snow storm in January that allowed most of us to stay home on a Saturday and read, make soup, catch up on our favorite TV shows, or read a good book under a warm blanket. Hopefully this is far behind us, and we're headed toward brighter days!

March is a busy month with exciting events that meet a variety of interests: "Shabbat Across America" welcomes the first weekend (March 4), followed by a private tour of Yards Brewing Company on Saturday evening, and closing the weekend with Kol Ami's first "House Concert" on March 6. As you read through the bulletin, many other events are scheduled. I encourage you to participate in the SHARE Food program, the Martini *Havdalah* or the insightful Continuing Jewish Education classes. I'm so grateful for our members who plan events for all of us to enjoy. We continue to build a stronger community every day. We are intimate and we are DYNAMIC! And we "lead" for all the right reasons.

I'm proud to lead one activity that many members are involved with yet some are not aware: Elkins Park *Hazon* Community-Supported Agriculture (CSA) resides at Kol Ami and is open to all in our community. *Hazon*, a leader in the Jewish food and environmental movement, along with our members, help us create a renewed sense of purpose and possibility for a sustainable future in our Jewish community and beyond. A CSA is a subscription with local farmers. Each week of the 25-week season, you will receive fresh, organic produce from the Lancaster Farm Fresh Cooperative (LFFC). There are different share sizes to meet your household needs. Nothing tastes so good, supports your health, and inspires you to try new foods than being part of our CSA. To learn more, check out the website (<http://www.lancasterfarmfresh.com>), and look for summer shares under the "CSA & Store" tab. If you have questions, write us at csa@kolami.info.

We are proud of our CSA accomplishments:

- This is our 10th season partnering with LFFC and *Hazon*!
- Elkins Park *Hazon* CSA was the first of nine *Hazon*-affiliated CSAs in the country and the very first in our region. Members from all the local synagogues participate. Today, there are more than 60 *Hazon* CSAs, the largest faith-based CSA network in North America.
- In 2007, our first year, 20 farmers grew for the LFFC, now there are over 110. That means more farmers are able to protect land for farming and make a living while growing organically. LFFC has 6,500 members during the summer season!
- We host an annual *Tu b'Shvat Seder* at Kol Ami, inspired by the *Hazon Haggadah*, where we share a fabulous community meal in celebration and appreciation of our land.
- For *Sukkot*, we savor an annual visit to Lancaster Farm Fresh Farms and enjoy a day of gratitude for our land, our food, and our partner farmers.

continued page 12

2016 SUMMER CSA

LANCASTER FARM FRESH COOPERATIVE



MAY - OCTOBER | 26 WEEKS

**NUTRIENT
DENSE FOOD**

SUMMER **SHARES**

VEGGIES, FRUIT, FLOWER, CHEESE
BREAD, MEAT, EGG, CHICKEN
MEDICINAL HERB, CULINARY HERB



LOCALLY ROOTED



SUSTAINABLY MINDED



ORGANICALLY SOURCED

For more information about the Kol Ami Hazon CSA,
please contact us at csa@kolami.info or call
Robin Rifkin, 215-635-4326, or Mark Kaplan, 215-906-6200.



FOR MORE INFORMATION VISIT:



WWW.LANCASTERFARMFRESH.COM



CSA@LANCASTERFARMFRESH.COM

CALL US!

215-656-3533 x2

DEADLINE:

2016 **APRIL 22ND**

TORAH & HAFTARAH

March 5 - *Vayakbel*

Exodus 35:1-38:20, II Kings 12:1-17

March 12 - *Pekudei*

Exodus 38:21-40, I Kings 7:51-8:21

March 19 - *Vayikra*

Leviticus 1:1-5:26, I Samuel 15:2-34

March 26 - *Tzav*

Leviticus 6:1-8:36, Jeremiah 7:21-8:3 ■



COMMITTEE MEETINGS

Committee meetings are held at the Synagogue, unless otherwise noted.

Caring Congregants Committee

Tuesday, March 15, at 6:00 p.m.

Co-chairs: Linda George, 215-782-1413, and Elaine Gershenson, 215-887-3994

Interfaith Relationship Dialogue

Tuesday, March 1, at 7:30 p.m.

at the Edelstein/McKinstry residence
Co-chairs: Joel Edelstein and Betsy McKinstry, 215-782-1704

Religious School PTO

Sunday, March 6, at 11:00 a.m.

Co-chairs: Erica Douglas, 215-491-0630, and Deborah Poppel, 215-947-2252

Social Action Committee

Tuesday, March 22, at 7:00 p.m.

Co-chairs: Jody Long, 215-635-4751, and Rocky Weinstock, 215-782-3848

Spiritual Growth Group

Monday, March 21, at 7:00 p.m.

Co-chairs: Janet Falon, 215-635-1698, and Meryle Gurmankin, 215-464-2466 ■

ADULT LEARNING AT KOL AMI

CONTINUING JEWISH EDUCATION

The non-member rate is \$50 per course; direct questions and RSVPs to Elaine Stevens at execdir@kolamielkinspark.org or 215-635-3110.

Is This What I Am Praying For?!

Instructor: Rabbi Seymour Rosenbloom

Thursday, March 17, 24 & 31 and April 7; from 7:30-9:00 p.m.

When we read the English translation of the traditional prayers, we often find ourselves ill at ease. How do we deal with prayers that challenge our idea of faith and that run contrary to what we believe? Do we hit the “delete” button? Or is there another way for them to have a place in our lives?

RSVP to the synagogue office by March 10.

Words That Have Spoken to Us Through the Ages

Instructor: Rabbi Elliot Holin

Thursday, April 14 & 21, from 7:30-9:00 p.m.

Psalms 23, 121, and 137 are among the best known and most-often recited among our writings. We will have the opportunity to study these verses and discuss what they mean and how they speak to us.

- **Psalm 23:** “The Lord is my shepherd, I shall not want... You restore my soul... Though I walk through the valley of the shadow of death, I will fear no evil... Your rod and Your staff, they comfort me.”
- **Psalm 121:** “I lift up my eyes to the mountains, from where shall my help come? My help comes from God... The Holy One who protects you will not slumber... God shall guard your going out and your coming in from this time forth and forever.”
- **Psalm 137:** “By the rivers of Babylon, there we sat down and wept when we remembered Zion... If I forget you, O Jerusalem, let my right hand forget how to perform rituals, let my tongue stick to the roof of my mouth.”

RSVP to the synagogue office by April 7.

The Book of Job: God, Truth, and Psychoanalysis

Instructor: Neal Beatus

Thursday, April 28 & May 5, 12 & 19; from 7:30-9:00 p.m.

The myth of Job, like other popular stories in the Bible, has lasted countless generations, because it contains key emotional truths about life, especially how to deal with suffering, trauma, and change. These are also themes that psychoanalysis addresses. We will examine parallels between the Book of Job and current psychoanalytic theory. We will also compare the story of Job to the myth of Jonah who runs from God/truth and to the myth of Jacob who wrestles with God/truth. What do the Bible and psychoanalysis teach us about dealing with life’s difficulties and traumas?

RSVP to the synagogue office by April 21. ■

WELCOME NEW MEMBERS THE KRAEMER FAMILY



Kol Ami is pleased to welcome new members Brett Kraemer and Aimee Rohrer-Kraemer, and their two young daughters, Alexandra and Aria. They just rejoined in October, and both girls are in our Religious School (Alexandra is in second grade, and Aria is in kindergarten).

Interestingly, this is their second go-around at Kol Ami; they have a long history with Rabbi Holin and our Congregation. Aimee says that when Rabbi Holin was at Rodelph Shalom, he was on the *bimah* when Brett became a *bar mitzvah*. Later, at Kol Ami, Brett and Aimee were married by Rabbi Holin in 2005, and Aimee went through the conversion to Judaism under Rabbi Holin's instruction in 2008. Also, Rabbi Holin officiated at the baby namings for Alexandria in 2007, and Aria in 2010. Aimee explains that the girls attended preschool at Adath Jeshurun, but once Aria graduated, they all decided to return full circle to Kol Ami.

Brett grew up in Elkins Park, and Aimee is originally from Johnston, PA. They met at age 19 when they both attended Penn State University, and after graduating, Aimee moved to the Philadelphia area to be with Brett and to attend graduate school. Currently, Aimee is a psychotherapist who works for Optum Health, and Brett is District Sales Manager at Paychex. Alexandra ("Alex") and Aria attend McKinley Elementary in the Abington School District.

As a family, they love spending time outdoors, taking walks at Alverthorpe Park, going on vacations to Long Beach Island, and playing at home in their yard with their 9-year-old Boston terrier named Salvatore. Alex loves soccer and is in the Kol Ami choir, and Aria loves music and ballet. All of the Kraemers are avid readers. Also, they are very environmentally conscious and engage in eco-friendly practices as a family ethic.

We are so glad to welcome the Kraemers back to Kol Ami! ■

If you have a friend, relative, colleague, or acquaintance who would be a great addition to our intimate-and-dynamic community, contact one of our Membership co-chairs: Julie Cohen, 215-635-4716, or Robin Warsaw, 215-635-5839. They would be happy to reach out and make a connection to share membership benefits and information as necessary.

MAZAL TOV

Congratulations go to the following individuals:

- **Mindy Jacobson-Levy** who received the Innovative Art Therapy Award at the Delaware Valley Art Therapy Annual Conference in October 2015.
- **Robert and Susan Seltzer** on the birth of their granddaughter, Tessa Ethena Goldstein, born on January 14 to parents, Rachel and Scott Goldstein and big sister Zoe Eilah Goldstein. ■

CONDOLENCES

We extend our condolences in loving memory

Joan Horowitz

cousin of Ellen (Michael) Matz

Ethel Korostoff

*mother of Gail Korostoff (Ben Adams)
grandmother of Sarah and Jonah*

May their memories forever be blessings in the midst of our People. ■

WE'LL GET YOU THERE!

Would you like to attend services, an event, or a committee meeting at Kol Ami, but are nervous about getting there? The Worship Enhancement Committee has developed a system for connecting riders with potential drivers.

Just contact Elaine Stevens at 215-635-3110 or execdir@kolamielkinspark.org no later than the Thursday before the event that you'd like to attend. You'll need to provide your name and phone number or e-mail address and the desired event's date and time. Then Elaine will send an "in-search-of" e-mail to Kol Ami congregants regarding your need. Hopefully a congregant who plans to attend that event will call or e-mail you directly. ■

Kol Ami Events

FASTS THIS MONTH AND NEXT



Join Rabbi Holin in fast days – or virtual fast days – every month, no matter where you are, by sending funds that you would have spent on food to help men, women, and children in need:

NATAL (*nah'tahl*) – the **Israel Trauma Center for Victims of Terror and War** – addresses Post-Traumatic Stress Disorder of combat veterans and former prison-

ers of war, as well as those who have lost loved ones in battle or suicide bombings, and anyone who suffers the sustained emotional and mental pressure of living with the fear and uncertainty that war and the threat of war bring. In addition, NATAL reaches out to families and relatives of victims and bereaved families through on-site counseling, a national hotline, and free or subsidized psychological assistance and treatment by highly trained professionals.

“For some children, the color red is not just a color.”

During Operation Protective Edge, NATAL answered thousands of calls every day and night from children and adults. Clinical staff and highly trained volunteers were enlisted to respond to this increased need. Working with Israel's media, millions of people received information about when, where, and how to get help. NATAL's emergency kits consist of information about trauma and methods of staying calm, as well as therapeutic tools to aid in managing tension. There is still a strong demand for thousands of these kits to be distributed to individuals, schools, and communities throughout Israel.

Forthcoming fast days on behalf of **NATAL** will be on first Wednesdays, **March 2**, and **April 6**.

PHAST FOR PHILADELPHIA is on behalf of unemployed workers in Philadelphia who are struggling to make ends meet by helping them pay their mortgages, address health-care needs, and pay electric bills.

Forthcoming **Phast for Philadelphia** fast days will be on fourth Thursdays, **March 24**, and **April 28**.

Below are the mailing addresses for the organizations mentioned previously:

American Friends of NATAL

1120 Avenue of the Americas, Fourth Floor
New York, NY 10036

Unemployment Information Center

112 North Broad Street, 11th Floor
Philadelphia, PA 19102

(make check payable to Unemployment Information Center with a memo note “Philadelphia Unemployment Office”)

“SHABBAT ACROSS AMERICA”

March 4 at our 7:30 p.m. erev Shabbat Service

Congregation Kol Ami joins in the national celebration! Give your friends a taste of Kol Ami!



“Shabbat Across America” is a nationally acclaimed, annual event that gives people a positive and joyful *Shabbat* experience. Synagogue members throughout the country are encouraged to invite their unaffiliated friends to a *Shabbat* dinner at their congregation to celebrate the defining

moment of the Jewish week together. The National Jewish Outreach Program will publicize this evening throughout America.

Your guests will be “our guests” at the catered dinner, so please call Elaine Stevens no later than March 1 at 215-635-3110 to RSVP for dinner. The cost is \$16 per adult and \$10 per child under the age of 8.

HEALING SERVICE

Sunday, March 6, at 1:00 p.m.

Our tradition offers moving and powerful prayers for loved ones in hospitals, recovering at home, or in hospice care, and for ourselves as well: healers who are in need of healing and those in mourning. This brief worship service includes the *Mi'Shebbeirach* (“May The Holy One Who blesses...”) prayer as well as the hope that we will find *menuchah* (“tranquility”) within ourselves during trying times.

continued next page

"SECOND-FRIDAY" EREV SHABBAT MARCH BIRTHDAY AND ANNIVERSARY BLESSINGS

Friday, March 11, at 7:30 p.m.



If you or someone in your family is celebrating a birthday or anniversary in March, please join us at our special *erev Shabbat* service.

Rabbi Holin will bless everyone with a March *simcha* under a *tallit*. Watch for your invitation for this special *Shabbat simcha*.

Rabbi Holin will continue to send personal letters to everyone celebrating a significant birthday or anniversary ending with 0 or 5 (for example, 40, 45).

If you have a special 0 or 5 birthday or anniversary, you will be invited to participate in any Friday service in "your" month by blessing the candles or *challah*, or reciting the *Kiddush*, or at any Saturday service that month by carrying or blessing the *Torah*.

Come Smile with Us on **Friday, April 8!**

"Fun-for-Kids" erev Shabbat Services

This 6:00 p.m. service is appropriate for all ages.

It's a happy half-hour with lots of music and our terrific student choir. ■



"ADULTS-ONLY"

MARTINI HAVDALAH SERVICE AND SPICES

Saturday, March 12, starting at 5:30 p.m.

We'll supply the hors d'oeuvres and you supply the mixing devices, hard liquor, and mixers (beer, wine).

5:30 p.m. - Martinis and hors d'oeuvres

6:15 p.m. - Singing and *Havdalah* service

7:00 p.m. - Group dinner (details below)

You are invited to join us for dinner after the *Havdalah* service at Park Plates in Elkins Park. To sign up for the dinner ONLY, please contact Mindy Levy at 215-885-3672. Mindy will confirm receiving your dinner reservation and will provide further details about the evening. This will be a wonderful way to extend the joy of the service by spending the evening together.

SAVE THE DATE TO CELEBRATE OUR

EREV SHABBAT SERVICE AT OLD YORK ROAD - TEMPLE BETH AM

April 8 at 7:30 p.m. in Abington

The first year of our Congregation's highly innovative LAMED program of advanced Jewish study for our 11th grade, post-Confirmation students is well underway to rave reviews by our seven students – Maddie August, Hannah Hausen, Lia Hyman, Jacob Margasak, Ben Moss, Drew Steinbrecher, and Eleanor Streitwieser – and this evening, they will join their two 11th grade classmates from Beth Am to speak about their experiences. David Monblatt, our Director of Education and creator of LAMED, will talk about what makes LAMED unique and exciting, Beth Am's "Tefilah Band" will perform, and Rabbi Holin and Cantorial Soloist Rebecca Schwartz will participate in the service.

This will be our Congregation's only service this evening, and our *Kaddish-Yahrzeit* list will be read, as well as the next morning, as usual, at our *Shabbat* service in our chapel.

SUMMER HEBREW

Rabbi Holin will be teaching Hebrew this summer for those who want to refresh or learn to read the prayers of our services, or as a head start for our two-year Adult *Bnai Mitzvah* course that will commence in October, culminating in a *Bnai Mitzvah* service in the Spring of 2018.

Please call our rabbi (215-635-4182) to let him know if you are interested in summer Hebrew study and whether you prefer to do so on a Tuesday, Wednesday, or Thursday as well as in the mornings, afternoons, or evenings. ■



Congregation Kol Ami Members "Our House" Concert

featuring

Cory Newman at the Piano

playing works by Chopin, Bach, Beethoven, Brahms, Mendelssohn and more

Sunday, March 6, 2016

5:00 to 7:00 p.m.

Congregation Kol Ami Lobby



*A bite to eat, a chat with friends...
a classical evening...*



*We invite you to a "Congregants Connection" house concert in our lobby.
Enjoy light hors d'oeuvres, home-baked desserts, and your BYOBeverage
with the backdrop of beautiful art by Ruslan Khais.*

Hosted by Karen Gurmankin and Betsy McKinstry



*Please join us! No charge, but RSVP required, ensuring plenty of food for all.
Don't forget — it's BYOB!*

*RSVP by February 29 to Elaine Stevens at
215-635-3110 or execdir@kolamielkinspark.org.
Need a ride? Let Elaine know and we'll arrange!*



Congregation Kol Ami Hosts

Social Action Event

Sunday, March 13, 2016, 1:00-3:00 p.m.

Help Philadelphia Families Enjoy a Meal This Season by
Packing Food Boxes

at

SHARE Food Program
2901 W. Hunting Park Ave., Philadelphia

SHARE provides food to over 20,000 low-income families each month.
A great activity for the whole family, ages 8 and up

Map: <http://sharefoodprogram.org/contact>

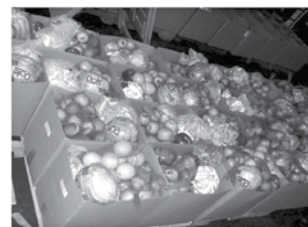
Directions to SHARE:

Route 1 South to Fox Street exit. At top of the exit, turn left onto Fox Street.
Follow Fox Street to Hunting Park Avenue, (about 3 lights), turn right.
Take Hunting Park to 29th Street. Turn right into the SHARE parking lot.

RSVP to Jody Long at 215-512-3636 or jodyl321@comcast.net



The warehouse
is often chilly,
dress appropriately!



This is a wonderful *Mitzvah* Project for upcoming *Bar/Bat Mitzvah* students, as well as perfect for community service hours.

Mark your calendars for a future SHARE program on May 15.



KEHILLAH Purim Carnival

at Keneseth Israel 8339 Old York Road, Elkins Park

Sunday, March 20

Preschool Admission
11:15 AM

General Admission
12:00 – 2:00 PM

To sign up and purchase in advance (advised), contact one of the participating synagogue offices.

"All-play" wristband for ages 2 to 12
\$10 in advance • \$15 at the door
Free for adults

Fun, Fun, Fun!

- Games
- Moon bounces
- Face painting
- Raffles
- Prizes
- Preschool activities
- Inclusion area available
- Alex's Lemonade Stand
- Kosher food and hamantashen for sale

Games, food, and prizes for all ages!

Costume Parade!

Hamantashen Eating Contests!

In partnership with:
Kehillah of Old York Road
and



Jewish Federation of
Greater Philadelphia
One People • One Community • One Federation™

Beth Sholom Congregation
215.887.1342

Chabad Lubavich Jewish Center
267.536.5757

Congregation Adath Jeshurun
215.635.6611

Congregation Kol Ami
215.635.3110

Keneseth Israel
215.887.8700

Melrose B'nai Israel Emanu-El
215.635.1505

Old York Road Temple-Beth Am
215.886.8000

Young Israel of Elkins Park
215.635.3152

ARTIST OF THE MONTH: LAURIE BECK PETERSON

OPEN HOUSE, APRIL 3 FROM 1:00-3:00 P.M.; EXHIBIT MARCH 29-MAY 2



After Peterson received a degree from Syracuse University, studying at both S.I. Newhouse School of Public Communication and Crouse College School of Visual and Performing Arts, she launched her commercial photography career as an in-house corporate photographer for Eastman Kodak Company, and then opened Beck Photography, first in Rochester, and then moved the company to Philadelphia where she has remained. Her corporate clients include: Sports Illustrated, People Magazine, Glaxo-SmithKline, IBX, The William Penn Foundation, The Philadelphia Inquirer, University of Pennsylvania Penn Nursing Science, Kroger Foods, Buchanan, Ingersol and Ramsey, as well as numerous writers and musicians.

Peterson is also deeply committed to fine art, working in the non-silver photographic processes of gum bichromate, cyanotype, and palladium, using enlarged pinhole and Holga images as a starting point for most of her work. She currently teaches non-silver at The University of the Arts and holds workshops in alternative processes. Peterson's non-silver and silver work hangs in many private and corporate collections and exhibits nationally and in solo and group shows. Recent work has been included in the book Portraits produced by Sante Fe Photographic Workshops and A&I Books and is included in the soon-to-be-released book Gum Printing: A Step-By-Step Manual Highlighting Artists and Their Creative Practice by Christina Z. Anderson.

Peterson has enjoyed being a guest speaker at The Women in Photojournalism Conference, commencement speaker at The Art Institute of Philadelphia, juror of photo competitions, and has recently served on the Board of Directors of First Person Arts.

VISIBLE OBSCURED SERIES ON DISPLAY AT KOL AMI

The prints of trees and woods that compose the "Visible Obscured" series explore the symbiotic relationship between process and subject matter. In the non-silver process of gum bichromate, the imagery develops through addition and subtraction. Printmaking paper is coated with watercolor pigment that has been thinned with gum Arabic and combined with a sensitizer of ammonium dichromate. Once dried, a negative is placed on top in tight contact and exposed to sunlight or any actinic or ultraviolet (UV) light source. The paper is then rinsed in water and the areas that receive no exposure from the sun or UV light wash away. What is left is a layer of the print. This process is repeated multiple times with different pigment colors, often brushing away the soft top layer to reveal the exposure beneath and the ethereal layers eventually coalescing into the final print.

Forests, and the trees that compose them, emerge out of a similar dance of layering and revealing. The cambium of trees grows in rings, then divides to create new tissue. Some of this tissue dies each year to become part of outer bark. The trees themselves grow, die, and eventually become soil, out of which grows more trees. Layering and revealing, adding and subtracting, all play a role in this slow, yet dynamic process.

Both processes rely upon the energy of the sun to create physical form, be it a tree or a print. The centrality of sunlight is additionally emphasized within the work itself through a focus on compositional tonality.

Certain formal and conceptual sensibilities that occur in this work are also present in Peterson's previous body of primarily figurative pieces. Figuration is central, whether the overt subject matter is trees or people. Light defines form. Color plays an integral role in creating mood.

However, "Visible Obscured" represents to Peterson a renewed commitment to "slow art." That is to say, she works with the non-silver process expressly because it is tedious, laborious, and time-consuming, not in spite of these qualities. Her subject matter, the woods and the trees, evolved over centuries. Mirroring and interpreting this process in an artistic manner affords her the opportunity to align herself with elemental forces of nature, to become a creator in the deepest sense of the word. ■

The Kol Ami gallery hours are Wednesday from 4:00-8:00 p.m. and Sunday from 10:00 a.m.-noon. If the Religious School is closed on those days, the gallery is also closed. All of Peterson's works are for sale. See Elaine Stevens if interested in purchasing a piece.



- Our CSA has hosted or sponsored countless programs about food, cooking, and environmental sustainability, including: local sustainable food systems; *Eco-kashrut*; food waste; bees and honey; Kosher and pasture-raised meats, including the movies, “A Place At the Table” and “Food Stamped”; and the many films through the Sustainable Film series at the Ambler Theatre.
- We have held cooking demonstrations on *challah* making, fermenting, and pickling.
- We have hosted our Amish farmers and learned about the *Shmita* tradition.
- Our members have attended national *Hazon* food conferences, as well as local *Hazon* and Israel bikes rides. We have co-sponsored three Philadelphia area *Hazon* Food Conferences.
- We partner with Creekside Co-op and Cheltenham Sustainability Committee to further strengthen our community. In fact, we won the Cheltenham Sustainability Award this past year!
- Kol Ami members are actively involved in *Hazon* regional efforts and the Advisory Board.

During the year, our goal is to host events that educate and inspire you to become more connected to the land and support sustainability - meeting the needs of the present without compromising the ability of future generations to meet their own needs. Join us on this journey!

Shelley Chamberlain
215-635-1738, srchamberlain@comcast.net ■

KOL AMI EARLY LEARNING CENTER



DENTAL AWARENESS MONTH: The children learned about taking care of their teeth and gums.

BELOW: On Sunday, January 31, the “New Members” brunch was held. This was a great opportunity for them to meet one another and to mingle with our president, rabbi, and members of the Membership Committee.



KOL AMI MARCH 2016 AT A GLANCE

Sunday	Monday	Tuesday	Wednesday	Thursday	Friday	Saturday
		1 Early Learning Center Fitness 9:30 a.m. Interfaith Relationship Dialogue 7:30 p.m. Home of Joel Edelstein and Betsy McKinstry	2 Religious School 4:00 p.m. and 6:00 p.m.	3	4 Early Learning Center erev <i>Shabbat Service</i> 11:00 a.m. "Shabbat Across America" erev <i>Shabbat Service</i> with Adult Choir 7:30 p.m.	5 Shabbat Service and Torah Dialogue 10:00 a.m. Yards Brewing Company Private Tour 5:30 p.m.
6 Trope Class 9:10 a.m. Religious School 10:00 a.m. to 12:00 p.m. 12:00 p.m. - Student Choir Rehearsal Adult Choir Rehearsal 10:25 a.m. Religious School PTO Meeting 11:00 a.m. Healing Service 1:00 p.m. "Our House" Concert with Cory Newman 5:00 p.m.	7	8 Early Learning Center Fitness 9:30 a.m.	9 Religious School 4:00 p.m. and 6:00 p.m.	10 Early Learning Center Yoga 9:30 a.m.	11 Early Learning Center erev <i>Shabbat Service</i> with Rebecca Schwartz 11:00 a.m. "Second-Friday" erev <i>Shabbat Service</i> 7:30 p.m.	12 Shabbat Service and Torah Dialogue 10:00 a.m. "Adult Only" Martini Havdalah Service 5:30 p.m.

KOL AMI MARCH 2016 AT A GLANCE (CONTINUED)

Sunday	Monday	Tuesday	Wednesday	Thursday	Friday	Saturday
13 Religious School 10:00 a.m. - 12:00 p.m. 10:00 a.m. - <i>Purim</i> <i>Maccabiah</i> 12:00 p.m. - Student Choir Adult Choir Rehearsal 10:25 a.m. Social Action Committee SHARE Food 1:00 p.m.	14 Early Learning Center Music 9:30 a.m.	15 Early Learning Center Fitness 9:30 a.m. Caring Congregants Committee Meeting 6:00 p.m.	16 Religious School 4:00 p.m. and 6:00 p.m.	17 Continuing Jewish Education for Adults with Rabbi Seymour Rosenbloom 7:30 p.m.	18 Early Learning Center erev Shabbat Service with Rabbi Holin 11:00 a.m. erev Shabbat Service 7:30 p.m.	19 Shabbat Service and Torah Dialogue 10:00 a.m.
20 Religious School CLOSED Kehillah Purim Carnival 12:00 p.m. Keneseth Israel Philadelphia 76ers vs. Boston Celtics 6:00 p.m.	21 Spiritual Growth Group Meeting 7:00 p.m.	22 Early Learning Center Fitness 9:30 a.m. Social Action Committee Meeting 7:00 p.m.	23 Religious School CLOSED	24 Early Learning Center Purim Carnival 11:00 a.m. Continuing Jewish Education for Adults with Rabbi Seymour Rosenbloom 7:30 p.m.	25 Early Learning Center erev Shabbat Service with Rebecca Schwartz 11:00 a.m. erev Shabbat Service 7:30 p.m.	26 Shabbat Service and Torah Dialogue 10:00 a.m. Carol Nemeroff will give the <i>dvar Torah</i>
27 Religious School CLOSED	28 Early Learning Center Music 9:30 a.m.	29 Early Learning Center Fitness 9:30 a.m.	30 Religious School CLOSED	31 Continuing Jewish Education for Adults with Rabbi Seymour Rosenbloom 7:30 p.m.		

HOW YOUR CONTRIBUTIONS ARE APPLIED

Below is a list of the available Kol Ami funds:

ADULT EDUCATION FUND

Enables us to invite scholars, authors, and artists to speak about: Jewish history and contemporary issues; their motivation for writing about specific themes; and their interpretation through art and music about Jewish life in the past and present.

ARTS & CULTURE FUND

Enables us to provide funding for cultural programs, including music and arts, the preservation and maintenance of artwork within the synagogue, and the beautification of the meditation garden.

BAR/BAT MITZVAH & CONFIRMATION FUND

Enables us to provide appropriate gifts (books, kiddush cups, and Shabbat candlesticks) when our young adults celebrate their Bar/Bat Mitzvahs and Confirmations.

"DISCOVER ISRAEL" FUND

Enables us to provide scholarships to enable children of our members to participate in approved peer-group trips to Israel.

FAMILY CAMP WEEKEND FUND

Enables us to underwrite the cost of Family Camp Weekend programs and to welcome specialists on a "weekend away" to explore a Jewish theme with our rabbi.

FAMILY EDUCATION FUND

Enables us to underwrite the cost for our programs and to welcome guest speakers to special events.

HOLOCAUST EDUCATION FUND

Enables us to offer age-appropriate programs to our religious school students. A variety of educational initiatives will be sponsored, including, but not limited, to speaker programs, intolerance awareness, and travel to memorial museums/sites—all with a focus on its current relevance.

LIBRARY FUND

Enables us to purchase books for the education and enjoyment of our children, youth, and adults.

ONEG SHABBAT FUND

Enables us to provide refreshments following Shabbat services.

RABBI'S DISCRETIONARY FUND

Enables Rabbi Holin to perform *mitzvot* for those in need, in the name of the Congregation.

RELIGIOUS SCHOOL FUND

Enables us to provide resources and programs for the benefit of our children in religious school.

SYNAGOGUE FUND

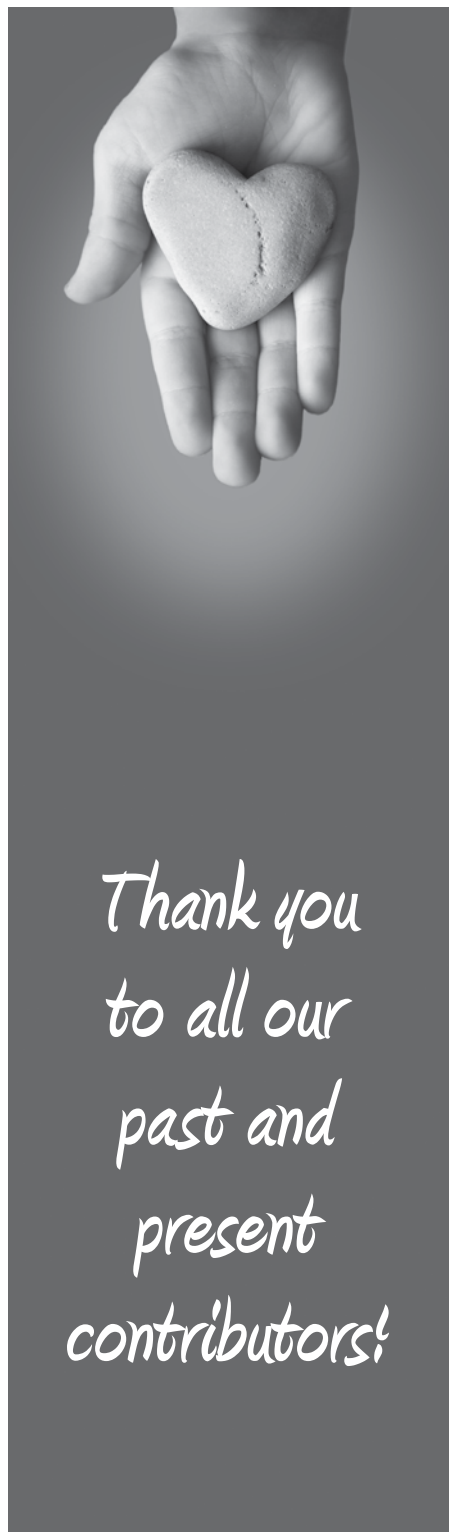
Enables us to provide for the general well-being of the Congregation.

YOUTH FUND

Enables us to provide scholarships to enable children of our members to participate in Jewish enrichment experiences at camps, youth enclaves, and other programs. ■

Kol Ami Contributions

We thank the following individuals for their generous donations to Kol Ami funds. If you would like to make a donation, send it to Congregation Kol Ami, 8201 High School Road, Elkins Park, PA 19027, and indicate to which fund it should be applied.



ARTS & CULTURE FUND

Joye Schwartz

ONEG SHABBAT FUND

In Honor of:

Special birthday of Jane Finkle

John Michel and Jane Finkle

Bat Mitzvah of our daughter, Jenna

Jeffrey and Robynn Margasak

Bat Mitzvah of our daughter, Hope

Cary Mazzer and Janet Falon

In Memory of:

Steven Isaacman

Marshall and Ilene Schafer

Yoel Shoham

Benjamin Shoham and Lisa Ney

RABBI'S DISCRETIONARY FUND

In Memory of:

Harry Ernst

Shirley Barr

Harold Stern

Ellen Stern

SYNAGOGUE FUND

In Memory of:

Harold Horowitz

Michael and Sara Chernoff ■



MARCH

- **TUESDAY, MARCH 1, at 7:30 p.m.**
Interfaith Relationship Dialogue at the home of Joel Edelstein and Betsy McKinstry
- **FRIDAY, MARCH 4, at 7:30 p.m.**
“Shabbat Across America” *erev Shabbat* Service with Adult Choir
- **SATURDAY, MARCH 5, at 5:30 p.m.**
Yards Brewing Company Private Tasting Tour
- **SUNDAY, MARCH 6,**
11:00 a.m. - Religious School PTO Meeting
1:00 p.m. - Healing Service
5:00 p.m. - “Our House” Concert with pianist, Cory Newman
- **SATURDAY, MARCH 12, at 5:30 p.m.**
Martini *Havdalah* followed by dinner at Park Plates
- **SUNDAY, MARCH 13, at 1:00 p.m.**
Social Action Committee SHARE Food Program
- **TUESDAY, MARCH 15, at 6:00 p.m.**
Caring Congregants Committee Meeting
- **THURSDAY, MARCH 17, 24 & 31 AND APRIL 7, at 7:30 p.m.**
Continuing Jewish Education for Adults with Rabbi Seymour Rosenbloom
- **SUNDAY, MARCH 20**
12:00 p.m. - Kehillah *Purim* Carnival at Keneseth Israel
6:00 p.m. - 76ers vs. Boston Celtics
- **MONDAY, MARCH 21, at 7:00 p.m.**
Spiritual Growth Group Meeting
- **TUESDAY, MARCH 22, at 7:00 p.m.**
Social Action Committee Meeting

APRIL

- **SUNDAY, APRIL 3**
11:00 a.m. - Religious School PTO Meeting
12:00 p.m. - Human Resources Committee Meeting
- **FRIDAY, APRIL 8, at 6:00 p.m.**
6:00 p.m. - “Fun-for-Kids” *erev Shabbat* Service with Student Choir
7:30 p.m. - *erev Shabbat* Service at Old York Road - Temple Beth Am with our 11th-Grade LAMED Students
- **SUNDAY, APRIL 10, at 5:00 p.m.**
76ers vs. Milwaukee Bucks Event
- **MONDAY, APRIL 11, at 7:30 p.m.**
Religious School Committee Meeting
- **THURSDAY, APRIL 14 & 21, at 7:30 p.m.**
Continuing Jewish Education for Adults with Rabbi Holin
- **FRIDAY, APRIL 15, at 7:30 p.m.**
erev Shabbat Service honoring our Volunteers
- **SUNDAY, APRIL 17, at 9:30 a.m.**
Worship Enhancement Committee Meeting
- **MONDAY, APRIL 18, at 7:00 p.m.**
Spiritual Growth Group Meeting
- **SATURDAY, APRIL 23, at 6:00 p.m.**
Congregation Second *Seder*
- **TUESDAY, APRIL 26, at 7:30 p.m.**
“Conversations” at the home of Jonathan Smolowe and Vera Frumin
- **THURSDAY, APRIL 28 AND MAY 5, 12 & 19, at 7:30 p.m.**
Continuing Jewish Education for Adults with Neal Beatus
- **FRIDAY, APRIL 29, at 10:00 a.m.**
Passover-*Yizkor* Service
- **FRIDAY, APRIL 30, at 5:30 p.m.**
Bat Mitzvah of Sydni Engel ■