

December 2014

Kislev-Tevet 5775

קול עמי

AN INTIMATE
AND DYNAMIC
COMMUNITY

CONGREGATION **Kol Ami** VOICE OF MY PEOPLE

WORSHIP SERVICES

FRIDAY, December 5, at 7:30 p.m.

Male-Led *erev Shabbat* Service with Cantor Leon Sher and Cantorial Soloist Rebecca Schwartz plus "First-Friday" birthday and anniversary blessings and the voices of our Adult Choir

SATURDAY, December 6, at 10:00 a.m.

Shabbat Service and *Torah* Dialogue

FRIDAY, December 12, at 7:30 p.m.

erev Shabbat Service

SATURDAY, December 13

10:00 a.m. - *Shabbat* Service and *Torah* Dialogue

5:30 p.m. - *Bat Mitzvah* of Sarah England (see page 5)

FRIDAY, December 19

6:00 p.m. - "Fun-for-Kids" Show & *Qvell erev Shabbat* Service; appropriate for all ages, it's a happy half hour with lots of music and our Student Choir. Bring your favorite *hanukkiah* to the service and let us know why it is the one that you love to light during *Hanukkah*

7:30 p.m. - *erev Shabbat* Service with Grade 5 students presenting a skit about *Hanukkah*, miracles, and light, featuring what they have been studying in Ms. Holtzman's class this semester

SATURDAY, December 20, 10:00 a.m.

Shabbat Service and *Torah* Dialogue; followed by a potluck lunch

continued page 2

DEDICATION OF OUR Yahrzeit Wall

FRIDAY, JANUARY 23, AT OUR *EREV SHABBAT* SERVICE



Rabbi Holin will formally dedicate our beautiful *Yahrzeit* Wall during our worship service this evening.

Families whose loved ones names are inscribed on the memorial plaques will be invited to stand next to the *Yahrzeit* Wall during the service to recite a prayer provided by our rabbi on this special occasion.

If you would like to order a memorial plaque with the assurance that it will be placed on the wall by the date of our dedication, please contact our executive director, Elaine Stevens, by December 5.

If you are unable to be with us on January 23 and would like our rabbi to join you as you recite the prayer at the wall, please call him to arrange a time to do so. ■

WORSHIP SERVICES

(continued from page 1)

FRIDAY, December 26, at 7:30 p.m.
erev Shabbat Service

**SATURDAY, December 27, at
10:00 a.m.**
Shabbat Service and Torah Dialogue

FRIDAY, January 2, at 7:30 p.m.
erev Shabbat Service

SATURDAY, January 3, at 10:00 a.m.
Shabbat Service and Torah Dialogue ■

TORAH & HAFTARAH

December 6 - Vayishlach
Genesis 32:4-36:43
Obadiah 1:1-21

December 13 - Vayeshev
Genesis 37:1-40:23
Amos 2:6-3:8

December 20 - Miktze
Genesis 41:1-44:17
Zechariah 2:14-4:7

December 27 - Vayishlach
Genesis 44:18-47:27
Ezekiel 37:13-28 ■

COMMITTEE MEETINGS

Committee meetings are held at the Synagogue, unless otherwise noted.

Membership Committee

Monday, December 22, at 7:30 p.m.
Co-chairs: Robin Warsaw, 215-635-5839, and Julie Cohen, 215-635-4716

Operations Committee

Tuesday, December 16, at 7:30 p.m.
Co-chairs: Guy Appel, 215-938-9330, and Marshall Schafer, 215-663-0228

Spiritual Growth Group

Monday, December 8, at 7:00 p.m.
Co-chairs: Janet Falon, 215-635-1698, and Meryle Gurmankin, 215-464-2466

Worship Enhancement Committee

Sunday, December 14, at 9:30 a.m.
Co-chairs: Mindy Levy, 215-885-3672, and William Shapiro, 215-517-8666 ■



LIGHTING THE CANDLES AND SAYING THE BLESSINGS OVER THE HANUKKIAH

FIRST NIGHT OF HANUKKAH (TUESDAY, DECEMBER 16)

The *shamash*, or serving candle, is lit first and is used to light the other candles every evening. The *shamash* is noticeable because it is situated higher than, or in front of, the other candles. Each night of *Hanukkah*, the candles are placed in the *hanukkiah* from right to left (the same way in which Hebrew is read) but are lit from left to right.

ON THE FIRST NIGHT ONLY, the *Sheb'heb'chiyanu* is recited or sung:

בָּרוּךְ אַתָּה יי אֱלֹהֵינוּ מֶלֶךְ הָעוֹלָם שֶׁהֵחֵינּוּ וְקִיַּמְנוּ וְהִגִּיעֵנוּ לְזֶמֶן הַזֶּה

*Baruch Atah Adonai, Elobeinu Melech ha'olam
Sheb'heb'chiyanu v'ki'y'manu v'hig'yanu
laz'mahn hazeh*

Blessed are You, O Lord our God, Ruler of the universe,
Who has given us life, sustained us, and brought us to this time.

ON EACH NIGHT, the following blessings are recited or sung:

בָּרוּךְ אַתָּה יי אֱלֹהֵינוּ מֶלֶךְ הָעוֹלָם אֲשֶׁר קִדְּשָׁנוּ בְּמִצְוֹתָיו וְצִוָּנוּ
לְהַדְלִיק נֵר שֶׁל חֲנֻכָּה

*Baruch Atah Adonai, Elohiynu Melech ha'olam
asher kid'shanu b'mitzvotav v'tzi'vanu l'hadlik neir
shel Hanukkah*

Blessed are You, O Lord our God, Ruler of the universe,
Who sanctifies us through *mitzvot* and commands us to kindle
the candles of *Hanukkah*.

בָּרוּךְ אַתָּה יי אֱלֹהֵינוּ מֶלֶךְ הָעוֹלָם שֶׁעָשָׂה נִסִּים לְאַבוֹתֵינוּ בַּיָּמִים הָהֵם בְּזֶמֶן הַזֶּה

*Baruch Atah Adonai, Elobeinu Melech ha'olam
Sheb'asab neisim l'avo'taynu ba'yameem ha'hame
babz'mahn hazeh*

Blessed are You, O Lord our God, Ruler of the universe,
Who performed miracles for our ancestors in those days,
as at this time. ■

FROM THE RABBI'S STUDY

Rabbi Elliot J. Holin

On October 30th, twenty-six of us returned from our congregation's ten-day Adult Trip to Israel called "The Voices of Israel." It was one of the most informative, emotional, and enjoyable tours that I have ever experienced. This was our opportunity to travel through Israel—from Tel Aviv, north to Tzefad and then to Jerusalem, visiting numerous sites and communities along the way—and to meet, hear from and talk with eight outstanding speakers who addressed us about Israel through their experiences: a young entrepreneur in high-tech Tel Aviv; a woman who endured a long, grueling walk with her family from Ethiopia to Sudan and finally, a year later, to Israel; an artist in Tzefad whose work is influenced by Kabbalah; a retired Supreme Court Justice in Jerusalem; a mother on the Golan whose son died in a suicide bombing in Jerusalem during the Second Intafada; a leading spokesperson for settlers on the West Bank; a Christian Arab in Nazareth faced with the resurgence of a brawny, vocal Muslim presence that is making things very uneasy for him and his fellow Christians; and a military intelligence advisor to five Prime Ministers who has also been a negotiator in previous rounds of peace talks. Our January Bulletin will carry reflections of many of my fellow-travelers in the hope that their thoughts will inspire you, your families, and friends to go to Israel in the near future.

For now, I am eager to share something with you that was not on our itinerary.

It is a custom to give travelers to Israel a few dollars in your name so that they can perform *mitzvot* while there, and so you sent me on our congregation's recent Adult Trip to Israel (October 19th-30th) with your good wishes and largesse.

A combination of dollar bills, tens and twenties adding up to \$520 enabled me to place \$40 in thirteen envelopes that I gave to people along the way:

- seven homeless people in Tel Aviv, Tzefad, and Jerusalem, including an elderly, frail man lying on a busy sidewalk in Tel Aviv, his outstretched hand hovering over an overturned hat that had a few *shekels* in it
- the docent at the Peres Peace Center in Jaffa to help it continue its good work
- a woman in a community on the Golan whose son was killed in a suicide bombing in Jerusalem during the Second Intafada. She wrote a book to help her younger son cope with the death of his brother—a book and CD that have received wide acclaim—as she continues to speak as a therapist about moving through grief toward healing and the hope for peace
- shopkeepers with whom I chatted in Tzefad and Jerusalem: they and their families suffered the downturn to the tourist sector during Operation Protective Edge. One of them is the owner of a small gallery in Tzefad, and ten minutes after I gave him the envelope, he somehow found me to offer profound gratitude with tears in his eyes. I told him that it was from our congregation to let him know that we were with him in thought during the difficult summer, and now as well

continued page 4

AVAILABLE TO HELP AND...
CAN ALWAYS USE NEW MEMBERS

CARING CONGREGANTS

Need a ride, a meal, someone to talk to? Or would you like to help us provide meals, rides, or companionship to members in need of help? The Caring Congregants Committee reaches out to members in need of help.

To join us or benefit from our services, contact one of our co-chairs: Linda George at lindageorge@gmail.com or 215-782-1413 and Elaine Gershenson at gershlaw1@comcast.net or 215-887-3994. ■



CONDOLENCES

We extend our condolences in loving memory of:

Dudley Backup

brother of Marjorie Backup (Michael Levin)

Jay Bahme

uncle of Mark (Karin) Kaplan

Neil Douglas

*father of Andrew (Erica) Douglas
grandfather of Amber*

Anne Tino

*mother of Mark Tino (Elaine Lotto)
grandmother of Sarah and Brian*

Rabbi Moshe Twersky

cousin of David (Meryle) Twersky

May their memories forever be blessings in the midst of our People. ■

FROM THE RABBI'S STUDY

continued from page 3

- the coordinator of *Keren b'Kavode* (Sustenance with Honor) in Jerusalem after we spent time one morning filling boxes with food that would be delivered later that day to people in need

The words of Rabbi Lawrence Kushner in his book Invisible Lines of Connection often came to mind: "Throughout all Creation, just beneath the surface, joining each person to every other person and to every other thing in a luminous organism of sacred responsibility, we discover invisible lines of connection."

The entire journey was like that for us: forging lines of connection with each other, the land, and its people. What a journey!

Shalom u'vrachab,
Rabbi Elliot J. Holin ■

SOCIAL ACTION

JEWISH RELIEF AGENCY
Sunday, December 14
from 10:00 to 11:30 a.m.

Please come out to help us sort, pack, and deliver food to needy families at the Jewish Relief Agency (JRA) Food Distribution Center. Through the efforts of JRA's community of more than 10,000 volunteers, monthly food-relief packages are provided to 2,750 low-income families in the Greater Philadelphia area.

JRA food distributions take place one Sunday each month at their warehouse in Northeast Philadelphia (directions can be found at www.jewishrelief.org). Volunteers package kosher, nonperishable food in boxes and deliver the food packages to recipients according to predetermined delivery routes, complete with driving directions and maps. Most delivery routes take between 30 to 60 minutes to complete. ■

PRESIDENT'S LETTER

FROM CLASSROOM TO CLASSROOM, LEARNING WHAT IT CAN MEAN TO BE A JEW

As I write this in early November, I am still basking in the glow of the Kol Ami adult trip to Israel. Perhaps the learned Meryl Salkin's comment captured it best: "I can't believe how much I didn't know and how energized I am by learning."

Our trip was the ultimate classroom. When asked what my highlight from the trip was, my answer was simple: the highlight of the trip was that there were so many highlights. The theme was our name: Kol Ami, 'The Voice of My People,' and the voices of so many in Israel helped challenge our notions of this special place. These voices gave us the chance to hear a more complex view of what life is really like in the Middle East. From Eve Harow and the settler perspective, to Peter Abelow's view as a Jewish resident of East Jerusalem, to Adena, an Ethiopian Jew and the story of her family's travails, courage and unwavering faith in God when emigrating to Israel 30 years ago.

We listened to and engaged with Sheldon Shulman, an advisor to Prime Ministers in the Israeli government, as he gave us a geopolitical tour de force on the Middle East and helped us see that you can't possibly understand what happens there through the lens of Western thought. We learned from a retired Israeli Supreme Court Justice about "muddling" through the development of the law in a state with strong secular and religious voices, and movingly from Elaine Hoter, the mother of Gabriel, a teen Yeshiva student murdered at age 17 by a terrorist, who with her wine-making husband Chaim and with great grace and courage has remade her life's work. We learned from artists in Ein Hod and even saw a beautiful connection between Kabbalah and art with David Friedman in Safed.

We learned at the new Rabin museum and the Peres Peace Center, the redone Palmach museum, at Kfar Nachum (Capernaum) and at the 'illegal immigrants camp at Atlit, and as we re-enacted the battle at Ammunition Hill. We walked the steps of history in the Jewish Quarter and touched the Wailing Wall below ground, where men and woman can be together in this deeply spiritual place. We even packed food with Keren B'Kavod, an aid program of the Israeli Religious Action Center.

On top of all that, Ellen and I took a side trip deep into the Negev to Mitzpah Ramon to see and take a jeep tour through the Makhtesh, a geological wonder that is a naturally formed crater of immense proportions and is unique to Israel.

We learned from our Rabbi, from each other, and especially from our guide Kobi Cooper, a native of Cheltenham (CHS '94) who made aliyah, served in the IDF, and brought an unbelievably in-depth and rich perspective to the places we went and the people we met. Our January bulletin will feature short writings from many of us who went on this journey.

Our band of 26 was a group of caring travel companions and we did what our Religious School children do each week: we became sponges and learned

continued page 8

BAT MITZVAH OF SARAH ENGLAND

SATURDAY, DECEMBER 13, AT 5:30 P.M.



Sarah is in the seventh grade at Cedarbrook. Her favorite subjects are Latin—because she can experience other cultures in an enjoyable way—and music, since she loves to sing.

Her extracurricular activities are theatre, Acapella group, and volunteering. Her interests outside of school include acting, singing, playing video games, and supporting LGBTQ rights.

Her volunteer activities have included the Cedarbrook BTSN as well as time devoted to food pantries. Her *Mitzvah* Project is a clothing drive to help women get business clothing so they can get back on their feet to get a job.

“I enjoy being Jewish because of the feeling that everyone is friends and family. I am proud to be part of a tradition that has been going on for thousands of years, and I like that I am learning things that might be upsetting, but will make me stronger and wiser in the future.

“My favorite holy day is *Tu b'Shevat*, the New Year of Trees. I love nature, and to have a holy day to celebrate nature and trees is awesome to me!

“A particularly transforming personal experience occurred when I realized how poorly the LGBTQ community is treated, and I was appalled. I could not believe that people would treat each other like this. People complain about something that is racist or sexist, but they overlook how people treat people who just love each other. When I found out that my family members were part of the LGBTQ community, I couldn't stop smiling. I am so proud of them and everyone who keeps fighting. I hope that marrying someone you truly love is soon legal in all states.

“I chose to chant verses from Genesis 37:5-8 and 19-24 of my *Torah* Portion. It is about Joseph telling his brothers his dream, and their plans for revenge. The narrative warns us not to talk about something, even a dream, that shows you overpowering someone. It could make them mad and ruin your relationship with them. It also shows that the response of hatred could make you do things that you might not mean to do, but in the heat and anger of the moment, might make you do crazy things.”

We congratulate Sarah's parents, Bill and Lorie. ■



SYNAGOGUE LEADERSHIP

Main Office

215-635-3110

Rabbi Elliot J. Holin

215-635-4182

Jeffrey Cohen, President

215-635-3232

Ellen Asam, Vice President

215-635-5598

Julie Cohen, Vice President

215-635-4716

Jeffrey Margasak, Secretary

215-635-9332

Lisa Landau, Treasurer

215-635-9996

PROFESSIONAL STAFF

**IN RESPECT OF SHABBAT, THE OFFICE
CLOSES AT 3:00 P.M. ON FRIDAYS.**

Elaine Stevens, Executive Director

215-635-3110

David Monblatt

Director of Education

215-635-7106

Sheri Cutler

Early Learning Center Director

215-635-4180

Rebecca Schwartz, Cantorial Soloist

215-572-6094

Please send correspondence to:

Congregation Kol Ami

8201 High School Road

Elkins Park, PA 19027

Web site: www.kolamielkinspark.org

Facebook: <https://www.facebook.com/kolamielkinspark>

BULLETIN SUBMISSIONS

Please send articles by the fifth of the previous month (for example, by December 5 for the November issue) to **Janet Falon** at jfalons@english.upenn.edu. Articles may be edited as needed. Photographs/images to be included should be at least 2x3" in size and 300 DPI resolution to ensure good reproduction. ■



**HANUKKAH WILL BE HERE BEFORE
YOU KNOW IT:
DO YOU HAVE GIFT CARDS?**

**TURN IN YOUR SCRIP ORDER FORMS TO THE
OFFICE BY WEDNESDAY, DECEMBER 3, AND PICK UP
YOUR CARDS ON WEDNESDAY, DECEMBER 10,
JUST IN TIME FOR THE HOLIDAYS!**

*(THE USUAL SCRIP ORDER DEADLINE HAS BEEN EXTENDED FOR THE MONTH OF
NOVEMBER BECAUSE THERE IS NO RELIGIOUS SCHOOL ON SUNDAY, NOVEMBER 30)*

**ALSO: Stop by on Sunday, December 7,
to purchase a grocery card for your
seasonal food bank donation needs and
help two organizations at once!**

**Questions? Need extra forms?
Contact Deborah Poppel at dpoppel1@verizon.net**



Continuing Jewish Education

Torah Teachings and End-of-Life Wisdom

Instructor: Simcha Raphael

Monday evenings from 7:30 to 9:00 p.m.

December 8 & 15



This course explores Biblical narratives on the themes of living and dying as well as encounters with death and the world beyond. We will learn from our Biblical ancestors—in particular Jacob, Joseph, Moses, and others—how to find spiritual equanimity in life given the inevitable

finite nature of human existence.

Through study of both *Torah* and *Midrash*, as well as discussion and personal reflection, we will discover wisdom relevant for dealing with end-of-life issues and concerns in our lives today.

1. Jacob's Deathbed Finale - Family Dynamics: Family Drama, Trauma, and Healing at the End of Life
2. Joseph's Bones and the Jewish Tradition of Memory
3. "Do Not Go Gentle into the Night": Moses' Death in *Torah* and *Midrash*
4. Prophet Samuel, King Saul, and the Witch of Endor: Spiritualism and Postmortem Communication with the Dead ■

HIGH HOLY DAY APPEAL

Thank you to the following individuals for their generosity during our High Holy Day Appeal:

Phyllis Actman

Guy and Karol Appel

Bruce and Ellen Asam

Andrew August and Barbara Fink

David Baker and Irene Levy Baker

Shirley Barr

Nigel Blower and Julie Cohen

Barry and Allison Boise

David and Shelley Chamberlain

Michael and Sara Chernoff

Jeffrey Cohen and Ellen Friedman

Joel Edelstein, Betsy McKinstry, and Arin Edelstein

William England and Lorie Slass

Raymond and Elizabeth Grenald

David and Phyllis Harrison

Arnold and Phyllis Holtzman

David Hyman

William Hyman and Janine Pratt

Andrew and Shari Johnson

Paul and Ellen Kovnat

Justin and Julia Krik

Paul and Mindy Levy

Jeffrey and Robynn Margasak

Craig and Sharon Myers

Cory Newman

Allan Perry

Jack and Marsha Petcove

Stuart and Deborah Poppel

Marshall and Ilene Schafer

Robert Schiowitz and Ronit Sugar

Elaine Stevens

Erik Streitwieser

Jeffrey and Robin Warsaw

Morton and Marcia Wolpert ■

PRESIDENT'S LETTER

(continued from page 4)

about our faith, history, values and our practices. On Sunday November 2nd, I sat with the parents of our young children celebrating their consecration, their beginning of this life-long journey. As the consecration service began, I slipped away to wander through the classrooms, soaking up the insights about Judaism and the fruit of our children's learning on the walls of classrooms from K-1 right through grade 7. As the Rabbi said to the consecration parents, your children are beginning their learning journey and you can help them by deepening your knowledge of Judaism and by displaying and using ritual objects in the home. As David Monblatt reminded them, we also deepen classroom learning by regularly speaking with our children about what they are learning and the meaning it has to you as a parent.

From classroom to classroom, Israel and Kol Ami are amazing places where we find meaning in *Torah* and Jewish practice and bring it into our homes and our hearts.

Here are a few resources for your future trip to Israel:

- Kobi Cooper, guide extraordinaire <http://www.tourguideofisrael.com>
- Keshet: The Center for Educational Tourism in Israel, Peter Abelow, <http://www.keshetisrael.co.il>
- Adam Sela Jeep Tours in Mitzpah Ramon: www.adamsela.co.il, office@adamsela.com
- Ethnic Artist Cooperative, 34 Jaffa Road, Jerusalem, www.ethnicart.com

Jeff Cohen, 215-635-3232
president@kolamielkinspark.org ■

WHY IS KOL AMI MEANINGFUL TO ITS MEMBERS?

Here is Janine Pratt's response, shared at the September Prospective-Member *Shabbat* service.

As the non-Jewish half of an interfaith couple, I have looked at Kol Ami through the eyes of someone who is committed to having a Jewish household and raising my children in the Jewish faith without being Jewish myself. For those reasons, I have needed a place that will let me participate at a comfortable level and be part of a community without the awkwardness of feeling like an outsider. Twenty years ago, we found that place with Kol Ami and Rabbi Holin.

Although raised in the Catholic religion, I chose to leave it behind after meeting my husband. However, if my new family was going to be a part of the Jewish faith, I wanted to understand it and not be afraid of it. From the very start of the synagogue, I volunteered to participate in the activities at Kol Ami and was pleased to be met with only warmth and support. And boy, do we have activities.

Shortly after the beginning of the synagogue, my husband and I created the Interfaith Relationship Dialogue with Rabbi Holin, where interfaith couples could come and discuss issues important to them. That group still exists today, and I continue to value its uniqueness in a synagogue with a significant percentage of interfaith families. Many other Kol Ami activities and events have filled my time over the years, and I have met and become good friends with many people here.

I have watched my two girls grow increasingly rooted in Judaism through involvement in Kol Ami's Religious School, its incredible *Bar and Bat Mitzvah* program, and even through Jewish groups and camp beyond the synagogue. Their immersion in Kol Ami has helped create strong identities, and it shows when they call themselves Jews out in the larger community. I could not be more proud of their inner strength.

In the last few years, my husband has been offered the opportunity to relocate our family in order to move ahead in his work environment. Without a doubt, our discussions always come back around to the central place Kol Ami holds in our lives and how difficult it is to imagine our lives without it. As you can see, we haven't moved yet. ■



HANUKKAH FOOD DRIVE

Next time you are at the grocery store, please pick up one or more of the following items and bring them to the synagogue, any time from now until December 3. These will be delivered to needy families in our community in time for *Hanukkah*. Kosher foods are preferred.



**HANUKKAH CANDLES
POTATO PANCAKE (LATKE) MIX
GRAPE JUICE
BAGS OF FRESH POTATOES
APPLESAUCE
CANS OF VEGETABLES (LOW-SALT IF POSSIBLE)
MATZO BALL SOUP MIX
COOKING OIL
CHOCOLATE GELT**

Kol Ami Events



FASTS THIS MONTH AND NEXT

NATAL (*nah'tahl*), Israel's Trauma Center for Victims of Terror and War.

NATAL addresses Post-Traumatic Stress Disorder of combat veterans and former prisoners of war, as well as those who have lost loved ones in battle or suicide bombings, and anyone who suffers the sustained emotional and mental pressure of living

with the fear and uncertainty that war and the threat of war bring. In addition, **NATAL** reaches out to families and relatives of victims and bereaved families through on-site counseling, a national hotline, and free or subsidized psychological assistance and treatment by highly trained professionals. Forthcoming fast days on behalf of **NATAL** will be on Wednesday, December 3, and Wednesday, January 7.

Phast for Philadelphia is on behalf of unemployed workers in Philadelphia who are struggling to make ends meet by helping them pay their mortgages, address health care needs, and pay electric bills. Forthcoming **Phast for Philadelphia** fast days will be on Thursday, December 25, and Thursday, January 29.

Join our rabbi in a fast—or virtual fast—no matter where you are, by sending funds that you would have spent on food to help people in need:

American Friends of NATAL

1120 Avenue of the Americas, Fourth Floor
New York, NY 10036

Unemployment Information Center

112 N. Broad Street, 11th Floor
Philadelphia, PA 19102

(make check payable to Unemployment Information Center with a memo note "Philadelphia Unemployment Office")

"FIRST-FRIDAY" EREV SHABBAT SERVICE

for December Birthday and Anniversary Blessings
Friday, December 5, at 7:30 p.m.

If you or someone in your family is celebrating a birthday or anniversary in December, please join us at our special *erev Shabbat* service. Rabbi Holin will bless everyone with



a December *simcha* in front of the *Torah* Reading Table. Watch for your invitation for this special *Shabbat simcha*.

Rabbi Holin will continue to send personal letters to everyone celebrating a significant birthday or anniversary ending with 0 or 5 (for example, 40,

45). If you have a special 0 or 5 birthday or anniversary, you will be invited to participate in any Friday service in "your" month by blessing the candles or *challah*, or reciting the *Kiddush*, or at any Saturday service that month by carrying or blessing the *Torah*.

five BELOW
[FUNDRAISER]



YOU'RE INVITED!
TO A FUNDRAISING SHOPPING EVENT FOR
Congregation Kol Ami

DATE:	November 30 - December 6
TIME:	Open Monday-Saturday 10am-9pm and Sunday 11am-7pm. Plus extended holiday hours!
WHERE:	Five Below in Montgomeryville, PA (215-855-0461) and Five Below in Willow Grove, PA (215-657-1129)

it's simple! 10% of the purchases made by members of your group will be donated back to your organization.

all we ask is that this flyer is presented to our cashier at the time of purchase. please note that we do not allow flyers to be handed out in our store or shopping center at any time before, during or after your event.

this section to be completed by five below associate

PURCHASE AMOUNT (PRE-TAX) \$ _____
REGISTER: 1 2 3 4 5 6 (circle one)
ASSOCIATE NAME _____

sports. media. crafts. party. candy. room. style. now.

fivebelow.com

**MALE-LED EREV SHABBAT SERVICE
FEATURING CANTOR LEON SHER AND
THE KOL AMI ADULT CHOIR**

Friday, December 5, at 7:30 p.m.



Please join us for our first *erev Shabbat* service led by the men of our Congregation and featuring artist-in-residence Cantor Leon Sher, composer, conductor, guitarist, and pianist.

Fathers and sons are encouraged to participate together.

"A TASTE OF SHABBAT"

Sunday, December 7, from 10:00 to 11:00 a.m.



Come to this informal gathering in our chapel for an innovative approach to experiencing the meaning and joy of *Shabbat* when it's not *Shabbat* and dialoguing about "what matters, when and why."

This is an invitation to religious school parents and all adults to join us for "A Taste of *Shabbat*" through song, guided by Cantorial Soloist Rebecca Schwartz's selection of songs that we enjoy on *Shabbat* mornings, and with Rabbi Holin (who in response to a request at last month's dialogue to talk about how to reduce stress) as we explore how prayer and meditation are paths to contentment and wholeness. Discussion topics will vary every month and will be determined in advance by participants.

"TORAH HOME TALK"

Sunday, December 21, at 2:00 p.m. at the home of Stan and Rita Siegel in Lafayette Hill

Our *Torah* Scroll will travel to members' homes where Rabbi Holin will unroll it, explain how it is written, and discuss a compelling narrative with the host family and their friends from the synagogue and beyond our walls. This is a wonderful opportunity to see and hear how the "Torah Talks" in moments when history intersects with contemporary life.

Please call Stan and Rita at 610-897-8997 to let them know if you will be attending so that they can plan accordingly for seating and refreshments. ■

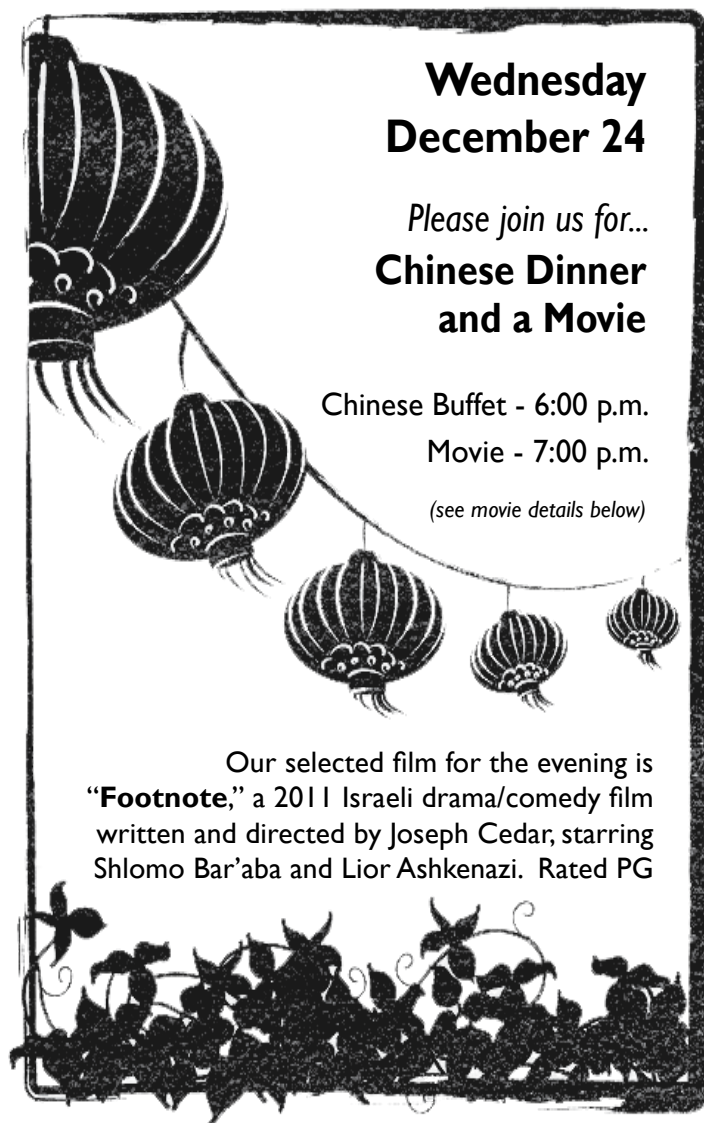
**Wednesday
December 24**

Please join us for...
**Chinese Dinner
and a Movie**

Chinese Buffet - 6:00 p.m.

Movie - 7:00 p.m.

(see movie details below)



Our selected film for the evening is "**Footnote**," a 2011 Israeli drama/comedy film written and directed by Joseph Cedar, starring Shlomo Bar'aba and Lior Ashkenazi. Rated PG

DOES THE SNOW MAKE YOU NERVOUS?

WE'LL GET YOU THERE!

Is the thought of driving in winter keeping you home-bound? Would you like to attend services, an event, or a committee meeting at Kol Ami, but are nervous about getting there?

The Worship Enhancement Committee has developed a system for connecting riders with potential drivers. Just contact Elaine Stevens at 215-635-3110 or execdir@kolamielkinspark.org no later than the Thursday before the event that you'd like to attend. You'll need to provide your name and phone number or e-mail address and the desired event's date and time. Then Elaine will send an "in-search-of" e-mail to Kol Ami congregants regarding your need. Hopefully a congregant who plans to attend that event will call or e-mail you directly. ■

Congregation Kol Ami presents:
**Kindness Counts: Welcoming LGBTQ* Jews and
Their Loved Ones into the Mishkan****

This important conference offers learning and dialogue through dynamic speakers and experiential workshops about welcoming and including LGBTQ Jews, making the synagogue community a safe and diverse spiritual, social and educational Jewish home for LGBTQ members and straight allies.

Featuring Keynote Speaker:
Joanna Ware
Keshet
Associate Director of National Programs
"Livvacha Mishpacha: To Choose Family"

"Keshet is a leading organization dedicated to working for the full equality and inclusion of lesbian, gay, bisexual, and transgender Jews in all aspects of Jewish life." (www.keshetonline.org)



Who is invited: Individuals, post bar/bat mitzvah teens through elders and synagogue teams

Practical and experiential workshops include (partial list):

- Creating LGBTQ Inclusive Space: Organization and Leadership Practices
- Education: Welcoming and Inclusive Curricula and Programming
- Weaving LGBTQ Sensitive Jewish Rituals into Congregational Spiritual Life
- Welcoming Diversity in Early Childhood Classrooms: Music is the Universal Language
- Straight Parents of LGBTQ Children: Fellowship and Resources
- Synagogue Panelists Share Their Experiences, Challenges and Successes

December 7th 2014, 1:00 - 5:30 PM.

* Lesbian, Gay, Bi-Sexual, Transgender, Questioning and/or Queer.

**Mishkan: historic tent of meeting in the wilderness, now the synagogue as a welcoming, nurturing, spiritual sanctuary.

To register, please complete this form and return to
Congregation Kol Ami by E-MAIL to
jetausig@gmail.com

or by mail to:

Congregation Kol Ami
8201 High School Road, Attention: Jane Tausig
Elkins Park, PA 19027

Name: _____

Mailing Address: _____

Email Address: _____

Phone Number(s): _____

Cost: \$20 per individual, \$15.00 for seniors age 65 & up,
Cost at the door: \$25.00 per individual, \$20.00 for seniors age
65 & up.

Check or credit cards accepted.

Please make check payable to Congregation Kol Ami or use your credit card:

VISA/Master Card # _____

Expiration Date: _____

Once we receive your registration we will be in touch about your workshop
selections.

December 7th 2014, 1:00 - 5:30 PM

Registration closes December 1, 2014. Space is limited.

Questions? Contact Jane Tausig, Program Chair, at 215/901-8730 or by e-mail: jetausig@gmail.com
to answer any questions, and ask about team registration.

♪ **Hanukkah, Oh Hanukkah,** ♪
♪ **Come Shop at our SALE!** ♪

Stop by during Religious School hours
December 7th, 14th, and 21st

Hanukkah Candles

SCRIP Gift Cards

Kol Ami Merchandise

- Car Magnets
- Tote Bags
- Golf Shirts



SHIR SHABBAT

**"And the women dancing with
their timbrels followed Miriam
as she sang her song..."**

—Debbie Friedman

FRIDAY, JANUARY 30, AT 7:30 P.M.

Please join us at our fourth annual *Shir Shabbat* (Song of Shabbat) service led by the women of our Congregation in gratitude to the women who led us in song through the Sea of Reeds (that week's Torah Portion) on our way from Egypt to Mount Sinai. This service will also feature music by female composers.

Contact Cantorial Soloist Rebecca Schwartz (rebeccasongs@verizon.net or 215-572-6094) no later than Wednesday, January 7, if you would like to participate in this wonderful service by leading us in English or Hebrew readings. Mothers and daughters are encouraged to participate together.

**10th Anniversary Musical Celebration of
the Adult and Children's Choirs of the
Kehillah of Old York Road**

Hanukkah Illuminated: Can you Handel it?

Sunday, Dec. 14 4pm

Keneseth Israel — 8339 Old York Road, Elkins Park

Festive Music and Excerpts from "Judas Maccabaeus" by G.F. Handel

-  **Hazzan Howard Glantz of Congregation Adath Jeshurun**
-  **Cantor Joshua Gordon of Congregation Melrose B'nai Israel-Emanuel**
-  **Cantor Amy Levy of Keneseth Israel**
-  **Cantorial Soloist Rebecca Schwartz of Congregation Kol Ami**
-  **Conductor Liz Sussman with KI's youth choir Shir Joy**
-  **Conductor Hazzan David F. Tilman of Shir KI**
-  **Hazzan Jeffrey Weber of Beth Sholom Congregation**
-  **Cantor Elena Zarkh of Old York Road Temple-Beth Am**
-  **Combined Adult and Children's Choirs**

**\$10 in advance; \$12 at the door;
children 8 years and under are free.**

**Congregation Kol Ami members may purchase tickets through Rebecca Schwartz.
Contact her directly at rebeccasongs@verizon.net or 215-572-6094. Payment can be
in the form of cash or a check made payable to 'Keneseth Israel.'**

Reform Congregation Keneseth Israel 8339 Old York Road, Elkins Park (215)887-8700





DENIM & *Diamonds*

ANNUAL FUNDRAISER

Saturday, January 10, 2015

7pm - 11pm

Congregation Kol Ami קול עמי

WINNINGS PROVIDED AS RAFFLE TICKETS
FOR FANTASTIC PRIZES!

\$35/person in advance

\$45 at the door

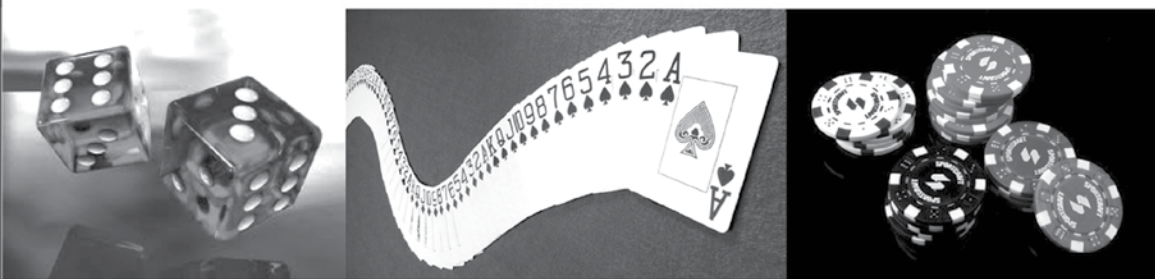
Tickets include \$25 in gaming chips, open bar, light fare and dessert

FOR TICKETS:

Send your check to Congregation Kol Ami, 8201 High School Road,
Elkins Park, PA 19027 with "Casino Night" on the memo line.

FOR FURTHER INFORMATION CONTACT:

Sharon Myers at 215-460-0602 or sharonmyers381@gmail.com



MAKE MAGIC

TURN \$100 INTO \$105

Buy a \$100** CreekSide Co-op gift card from Congregation Kol Ami.

You get \$100 to spend at CreekSide.
Kol Ami gets \$5.

You've made magic!

**p.s. You can make this magic by getting a gift card for any amount (Kol Ami will get 5%).

Buy card with cash or check (made payable to Kol Ami). Leave \$\$ and form in envelope for Barb Fink in the Religious School office or mail the form to Barb Fink.

Name_____

Email address_____

Total \$ amount_____ # of cards_____

Questions? Please contact Barb Fink at bfink3@gmail.com

ARTIST OF THE MONTH: TRACEY SCHIAVELLO - DECEMBER 2 TO JANUARY 12

Tracey Schiavello is a local girl. She was born in Abington, Pennsylvania, in 1960 and grew up in Bucks County. She received her BFA in Communication Design from Kutztown University in 1982. After completing a number of internships her senior year, Tracey was hired by Rodale Press and worked as a junior photographer and studio assistant. Tracey continued her education at West Chester University where she served as graduate assistant. During this time, she had the opportunity to create promotional and educational tools for the university, including admissions materials, television commercials and film. As a part-time gig, she was hired by NFL Films to record Philadelphia Eagle Football Games to be used by the team for training purposes.

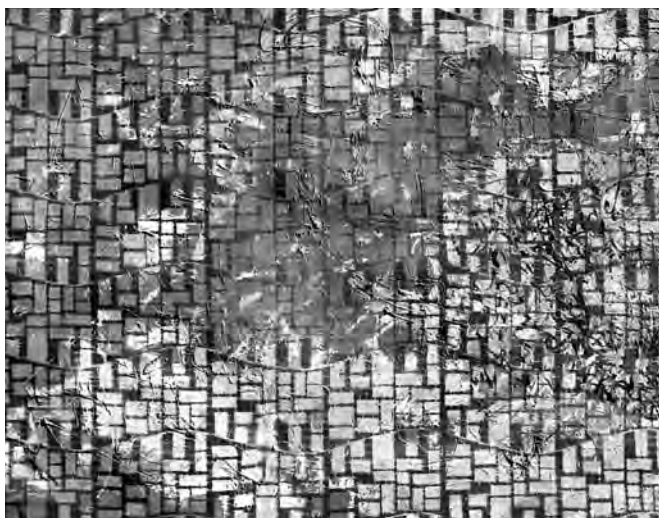
In 1983, Tracey received her Masters of Science in Instructional Media and went on to work as VP, Director of Marketing for Merrill Lynch Realty-Eastern PA and NJ, and Grubb and Ellis-California. After 10 years, developing innovative client contact and promotional materials, Tracey was blessed with the birth of her daughters, Cristine and Tess. As a stay-at-home mom, Tracey was never far from the creative world—she co-chaired the Chadds Ford Elementary Art Show's 50th Anniversary Celebration where she met such artists as Jamie Wyeth and Rick Bollinger. Rick and his wife, Pat, continue to inspire Tracey in faith and art.

If you talk to Tracey about her decision to become an art teacher, her eyes will sparkle, she will laugh and shake her head. "It was the most unusual set of circumstances," she will say. "I thought I was heading for elementary ed.! I was offered a 7-week substitute Art teacher position at Westtown-Thornbury Elementary and that was it! I was hooked! From the very first day that I walked into that classroom, I knew I was going to love being an art teacher! I am forever grateful to Karol Appel for her mentoring and Dennis Brown for his unwavering support." Tracey interviewed and was accepted into Moore College of Art and Designs' Art Education program. "It was one of the most educationally enriching times in my life. Under the direction of Lynne Horoschak, Moore now offers the only art education program in the United States to focus on training art teachers to enrich the lives of all students, including

those with special needs." Tracey taught at Moore's YAW and Special Needs Workshops and graduated in 2005.

Tracey is now a tenured teacher at Owen J. Roberts High School and teaches drawing, painting, sculpture, AP and studio art. She serves as adjunct professor at MCCC through the high school Dual-Enrollment program, consults on special projects, is active with Friends of the Arts, Philabundance, and other community programs.

The Kol Ami gallery hours are Wednesday from 4:00 to 8:00 p.m. and Sunday from 10:00 a.m. to noon. If the Religious School is closed on those days, the gallery is also closed. All of Tracy's works are for sale, and a portion of the proceeds are donated to the Synagogue. See Elaine Stevens if interested in purchasing a piece. ■



Fourth Annual Craft & Fine Arts Show A Success!

We are grateful to the following *Chai*-ly Spirited sponsors for their generosity and support of the 2014 Kol Ami Craft & Fine Arts Show:

PLATINUM LEVEL

Jeffrey Cohen and Ellen Friedman
Raymond and Elizabeth Grenald
William Hyman and Janine Pratt
Ladies of a Certain Age (LOCA)
Craig and Sharon Myers
Elaine Stevens

GOLD LEVEL

Guy and Karol Appel
Michael and Sara Chernoff
William England and Lorie Slass
Robert Schiowitz and Ronit Sugar

SILVER LEVEL

Bruce and Ellen Asam
Andrew August and Barbara Fink
Julie Cohen — 7 Keys to Work-Life Balance
Adam Hoffman and Lisa Landau
David Hyman and Farah Jimenez
Andrew and Shari Johnson
Adena Johnston — Complete School
Solutions
John Michel and Jane Finkle
Charles Langman and Laurie Jubelirer
Langman
Paul and Mindy Levy
David and Emily Lowe
Michael Matz and Ellen Horowitz Matz
Marshall and Ilene Schafer
Russell Schilder and Jodi Bloch Schilder
Erik and Jennifer Streitwieser

Special Acknowledgments go to:

Greg Brown and Ron Chmar of Dos Guys,
Elaine Gershenson, Cory Newman, Elaine
Stevens, Fran Surkin, our many volunteers
and the Craft & Fine Arts Show Commit-
tee members: Karol Appel, Jane Finkle,
Elaine Gershenson, Linda Jacobs, Lisa
Landau, Mindy Levy, Jody Long, Ellen
Horowitz Matz, Janine Pratt, and Fran
Surkin.

Lastly, many thanks to our vendors and
attendees for their participation in our
event! ■



ABOVE: A stonework piece by Bjorke Designs (Sinking Springs, PA), one of the many vendors who exhibited at the Kol Ami Craft & Fine Arts Show in September.

YEDIDAY KOL AMI

We greatly appreciate the support of the following members of *Yediday* Kol Ami, which raises funds to support our synagogue:

- Ira and Robin Adelman
- Anonymous
- Bruce and Ellen Asam
- David Baker and Irene Levy Baker
- Barry and Allison Boise
- Jeffrey Cohen and Ellen Friedman
- Suzanne Feld
- Benham and June Fuhrman
- Arthur Gordon
- Raymond and Elizabeth Grenald
- David Hyman
- William Hyman and Janine Pratt
- Craig and Sharon Myers
- Stuart and Deborah Poppel
- Robert Schiowitz and Ronit Sugar
- The Sender Family
- Michael Silverman and Robin Rifkin
- Elaine Stevens
- Erik and Jennifer Streitwieser
- Mark Tino and Elaine Lotto
- Bart Weiner and Nadine Liez-Weiner

For more information about *Yediday* Kol Ami, please contact Elaine Stevens at 215-635-3110 or execdir@kolamielkinspark.org. ■

HOW YOUR CONTRIBUTIONS ARE APPLIED

Below is a list of the available Kol Ami funds:

ADULT EDUCATION FUND: Enables us to invite scholars, authors, and artists to speak about Jewish history and contemporary issues; their motivation for writing about specific themes; and their interpretation through art and music about Jewish life in the past and present.

ARTS AND CULTURE FUND: Enables us to provide funding for cultural programs, including music and arts, the preservation and maintenance of artwork within the synagogue, and the beautification of the meditation garden.

BAR/BAT MITZVAH AND CONFIRMATION FUND: Enables us to provide appropriate gifts (books, *kiddush* cups, and *Shabbat* candlesticks) when our young adults celebrate their *Bar/Bat Mitzvahs* and Confirmations.

"DISCOVER ISRAEL" FUND: Enables us to provide scholarships to enable children of our members to participate in approved peer-group trips to Israel.

FAMILY CAMP WEEKEND FUND: Enables us to underwrite the cost of Family Camp Weekend programs and to welcome specialists on a "weekend away" to explore a Jewish theme with our rabbi.

FAMILY EDUCATION FUND: Enables us to underwrite the cost for our programs and to welcome guest speakers to special events.

HOLOCAUST EDUCATION FUND: Enables us to offer age-appropriate programs to our religious school students. A variety of educational initiatives will be sponsored, including, but not limited to, speaker programs, intolerance awareness, and travel to memorial museums/sites—all with a focus on its current relevance.

LIBRARY FUND: Enables us to purchase books for the education and enjoyment of our children, youth, and adults.

ONEG SHABBAT FUND: Enables us to provide refreshments following *Shabbat* services.

RABBI'S DISCRETIONARY FUND: Enables Rabbi Holin to perform *mitzvot* for those in need, in the name of the Congregation.

RELIGIOUS SCHOOL FUND: Enables us to provide resources and programs for the benefit of our children in the religious school.

SYNAGOGUE FUND: Enables us to provide for the general well-being of the Congregation.

YOUTH FUND: Enables us to provide scholarships to enable children of our members to participate in Jewish enrichment experiences at camps, youth enclaves, and other programs. ■

KOL AMI DECEMBER 2014 AT A GLANCE

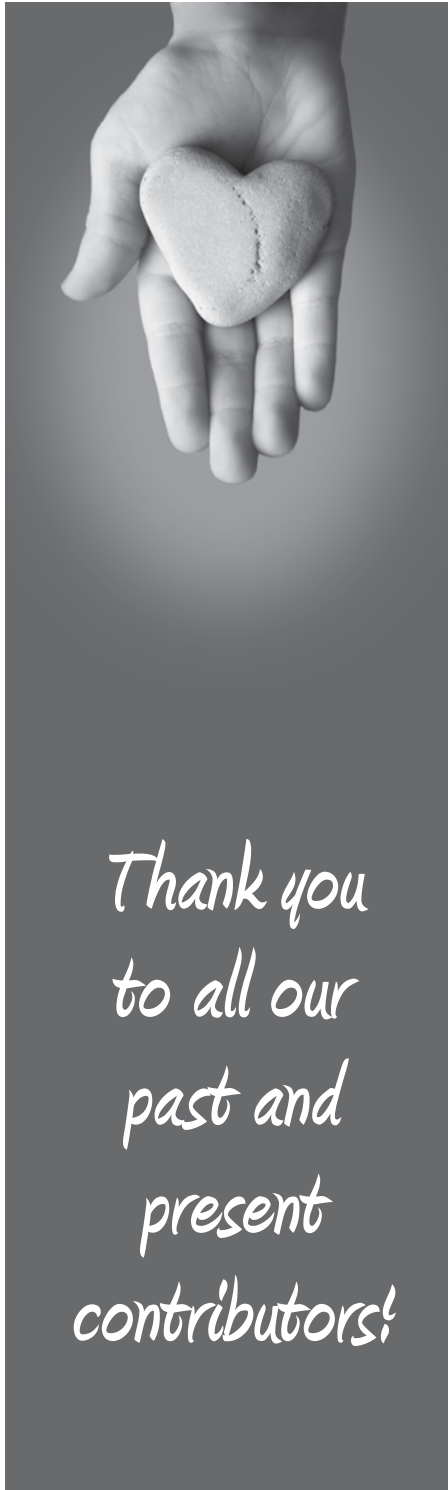
Sunday	Monday	Tuesday	Wednesday	Thursday	Friday	Saturday
	1 Early Learning Center Music 9:30 a.m.	2 Early Learning Center Fitness 9:30 a.m.	3 Religious School 4:00 p.m. and 6:00 p.m.	4	5 Early Learning Center erev <i>Shabbat</i> with Rebecca Schwartz 11:00 a.m. Male-Led erev <i>Shabbat</i> Service with "First-Friday" blessings and the Adult Choir 7:30 p.m.	6 <i>Shabbat</i> Service and <i>Torah</i> Dialogue 10:00 a.m. Junior Youth Group <i>Havdalah</i> and a Movie 5:30 p.m. at the home of Austin Copeland in Rydal
7 Trobe Class 9:00 a.m. Religious School 10:00 a.m. - Noon 12:00 p.m. - Student Choir Rehearsal "A Taste of <i>Shabbat</i> " with Rabbi Holin 10:00 a.m. Adult Choir Rehearsal 10:25 p.m. Kindness Counts: Welcoming LGBTQ Jews and Their Loved Ones into the <i>Mishkan</i> 1:00 p.m.	8	9	10	11	12	13 <i>Shabbat</i> Service and <i>Torah</i> Dialogue 10:00 a.m. <i>Bat Mitzvah</i> of Sarah England 5:30 p.m.
EARLY LEARNING CENTER BOOK FAIR: DECEMBER 8 - 12						
	Spiritual Growth Group with Carol Nemeroff 7:00 p.m. Home of Marci Wolpert Continuing Jewish Education for Adults with Simcha Raphael 7:30 p.m.	Early Learning Center Fitness 9:30 a.m.	Early Learning Center Jewish Programming 9:30 a.m. Religious School 4:00 p.m. and 6:00 p.m.	Early Learning Center PJ Party 6:00 p.m.	Early Learning Center erev <i>Shabbat</i> 11:00 a.m. erev <i>Shabbat</i> Service 7:30 p.m.	

KOL AMI DECEMBER 2014 AT A GLANCE (CONTINUED)

Sunday	Monday	Tuesday	Wednesday	Thursday	Friday	Saturday
14 Worship Enhancement Committee Meeting 9:30 a.m. Religious School 10:00 a.m. - Noon 12:00 p.m. - Student Choir Rehearsal Adult Choir Rehearsal 10:25 p.m. Kehillah Hanukkah Concert 4:00 p.m. Reform Congregation Keneseth Israel	15 Early Learning Center Music 9:30 a.m. Continuing Jewish Education for Adults with Simcha Raphael 7:30 p.m.	16 Early Learning Center Fitness 9:30 a.m. First Night of Hanukkah Operations Committee Meeting 7:30 p.m.	17 Religious School 4:00 p.m. and 6:00 p.m.	18	19 Early Learning Center erev Shabbat with Rebecca Schwartz 11:00 a.m. "Fun-for-Kids" Show & Qveil erev Shabbat Service with Student Choir 6:00 p.m. erev Shabbat Service with Grade 5 participation 7:30 p.m.	20 Shabbat Service and Torah Dialogue 10:00 a.m. followed by a potluck lunch
21 Religious School 10:00 a.m. - Noon 10:00 a.m. - <i>Maccabiah</i> - American Dreidel/Warrior with students and parents 12:00 p.m. - Student Choir Rehearsal Adult Choir Rehearsal 10:25 a.m. "Torah Home Talks" with Rabbi Holin 2:00 p.m. Home of Stan and Rita Siegel	22 Membership Committee Meeting 7:30 p.m.	23 Early Learning Center Fitness 9:30 a.m.	24 No Early Learning Center Winter Break No Religious School - Winter Break Chinese Dinner and a Movie 6:00 p.m.	25 No Early Learning Center Winter Break	26 No Early Learning Center Winter Break erev Shabbat Service 7:30 p.m.	27 Shabbat Service and Torah Dialogue 10:00 a.m.
28 No Religious School - Winter Break	29 No Early Learning Center Winter Break	30 No Early Learning Center Winter Break	31 No Early Learning Center Winter Break No Religious School - Winter Break			

Kol Ami Contributions

We thank the following individuals for their generous donations to Kol Ami funds. If you would like to make a donation, send it to Congregation Kol Ami, 8201 High School Road, Elkins Park, PA 19027, and indicate to which fund it should be applied.



ART & CULTURE FUND

In Honor of:

Bar Mitzvah of Evan Pelletier

David and Phyllis Harrison

Joel and Rebecca Schwartz

BAR/BAT MITZVAH AND CONFIRMATION FUND

In Honor of:

Bar Mitzvah of Evan Pelletier

Craig and Sharon Myers

ONEG SHABBAT FUND

In Honor of:

Bar Mitzvah of our son, Evan

Eric and Heather Pelletier

RABBI'S DISCRETIONARY FUND

Jim and Rosaline Shane

In Honor of:

Rabbi Elliot J. Holin

Michael and Irene Beer

In Memory of:

Julian Goodstein

Elaine Alexander

Barbara Levy

Doug and Carol Levy

SYNAGOGUE FUND

Jensen Toth

In Honor of:

**Special anniversary of
Craig and Sharon Myers**

Elaine Stevens

**Special anniversary of
Joel and Rebecca Schwartz**

Elaine Stevens

**The marriage of Martyn Swift
to Stephanie Rosenau**

Elaine Wit

In Memory of:

Ethel Hutkin

Robert and Susan Seltzer

Barbara Levy

Henry and Nancy Greenberg

Elaine Wit ■



DECEMBER 2014

- **MONDAY, DECEMBER 8 & 15, at 7:30 p.m.**
Continuing Jewish Education for Adults with Simcha Raphael
- **FRIDAY, DECEMBER 5, at 7:30 p.m.**
Male-led *erev Shabbat* Service with Cantor Leon Sher, “First-Friday” blessings, and the Adult Choir
- **SATURDAY, DECEMBER 6, at 5:30 p.m.** - Junior Youth Group *Havdalah* and a Movie at the home of Austin Copeland in Rydal
- **SUNDAY, DECEMBER 7**
 - 10:00 a.m. “A Taste of *Shabbat*” with Rabbi Holin
 - 1:00 p.m. - Kindness Counts: Welcoming LGBTQ Jews and Their Loved Ones into the *Mishkan*
- **MONDAY, DECEMBER 8, at 7:00 p.m.**
Spiritual Growth Group with Carol Nemeroff at the home of Marci Wolpert
- **SATURDAY, DECEMBER 13, at 5:30 p.m.**
Bat Mitzvah of Sarah England
- **SUNDAY, DECEMBER 14**
 - 9:30 a.m. - Worship Enhancement Committee Meeting
 - 4:00 p.m. - Kehillah *Hanukkah* Concert at Keneseth Israel
- **TUESDAY, DECEMBER 16**
 - First Night of *Hanukkah*
 - 7:30 p.m. - Operations Committee Meeting
- **FRIDAY, DECEMBER 19**
 - 6:00 p.m. - “Fun-for-Kids” Show & *Qvell* *erev Shabbat* Service with the Student Choir
 - 7:30 p.m. - *erev Shabbat* Service with Grade 5 participation
- **SATURDAY, DECEMBER 20, at 10:00 a.m.**
Shabbat Service and *Torah* Dialogue followed by potluck lunch
- **SUNDAY, DECEMBER 21, at 2:00 p.m.**
“*Torah* Home Talks” with Rabbi Holin at the home of Stan and Rita Siegel
- **MONDAY, DECEMBER 22, at 7:30 p.m.**
Membership Committee Meeting
- **WEDNESDAY, DECEMBER 24, at 6:00 p.m.**
Chinese Dinner and a Movie

JANUARY 2015

- **TUESDAY, JANUARY 6, at 7:30 p.m.**
Religious School Committee Meeting
- **FRIDAY, JANUARY 9, at 7:30 p.m.**
“Second Friday” *erev Shabbat* service with Adult Choir
- **SATURDAY, JANUARY 10, at 7:00 p.m.**
Casino Night
- **SUNDAY, JANUARY 11**
 - 10:00 a.m. - “A Taste of *Shabbat*” with Rabbi Holin
 - 11:00 a.m. - Religious School PTO Meeting
 - 1:00 p.m. - Healing Service
- **MONDAY, JANUARY 12, at 7:00 p.m.**
Spiritual Growth Group with Carol Nemeroff
- **THURSDAY, JANUARY 15, at 7:00 p.m.**
Social Action Committee Meeting
- **FRIDAY, JANUARY 16, at 7:30 p.m.**
Interfaith Family *erev Shabbat* Service
- **SATURDAY, JANUARY 17, at 5:30 p.m.**
Martini Havdalah
- **WEDNESDAYS, JANUARY 21 & 28, at 7:30 p.m.**
Continuing Jewish Education for Adults with Neal Beatus
- **FRIDAY, JANUARY 23, at 6:00 p.m.**
erev Shabbat Service with Grades K-2 participation and dedication of *Yahrzeit* Wall.
- **SATURDAY, JANUARY 24, at 10:00 a.m.**
Shabbat Service and *Torah* Dialogue followed by potluck lunch
- **SUNDAY, JANUARY 25**
Religious School Bake Sale ■